



1155 STAT Series Caster Series (All Plastic)

Resolute (Middle Tube Blue-Gray Dark Gray) Wheel Diameter×Wheel Width  
125×31mm

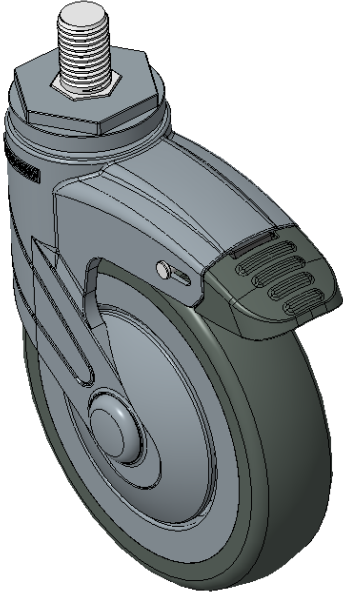
EAN

KS-11550500456533

Long double-brake type, With locking system Casters, Threaded Stem M16x25  
Blue-gray legs made of polyamide reinforcement, Threaded Stem installation  
Rust-proof, Corrosion resistant, Attractive appearance, Economical, and Smooth rotation  
High-Quality Impact-Resistant Polypropylene Wheel Center, High-Quality Reinforced Polypropylene Rubber (TPR) Wheel Tread  
Dark gray, Plain Bearings

Wheel tread: Thermoplastic rubber elastomer (TPR)  
Wheel Center: Made of high-quality impact-resistant polypropylene

Drawings are for reference only and may differ from the product



Picture may differ from original product

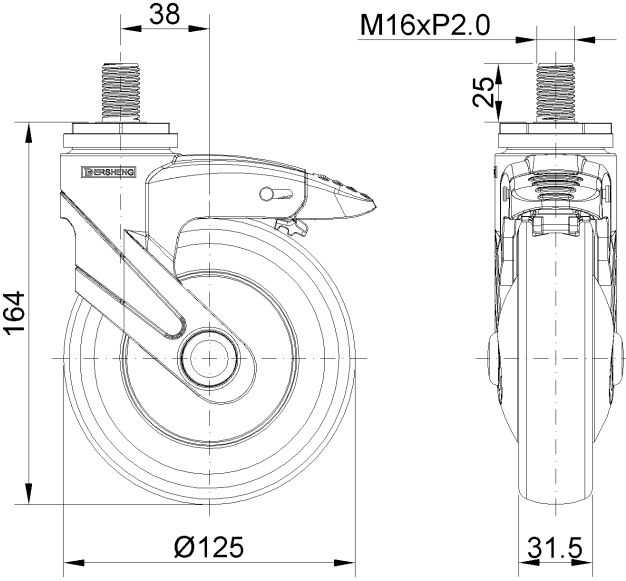
Technical Data

|  |                                |
|--|--------------------------------|
| <input checked="" type="radio"/> Imperial <input type="radio"/> Metric |                                |
| Wheel Diameter   | 5 "                            |
| Wheel Width  | 1-1/4 "                        |
| Wheel Bearing  | Wheel With Plain Bearing       |
| Threaded Stem  | M16                            |
| Threaded Length  | 1 "                            |
| Offset   | 1-1/2 "                        |
| Swivel Interference  | 9 "                            |
| Overall Height   | 6-1/2 "                        |
| Swivel Radius  | 4-1/2 "                        |
| Hardness Of Tread  | 72±5° Shore A                  |
| Load Capacity (Dynamic)  | 220lbs                         |
| Load Capacity (Static)   | 331lbs                         |
| Temperature  | -4°F to +140°F                 |
| Fork Type  | Swivel Caster With Total Brake |
| Stainless  | N/A                            |
| Electrical Conductivity  | N/A                            |
| Anti-Static  | N/A                            |
| Weight   | 2.0lbs                         |
| Standard   | ISO22883                       |

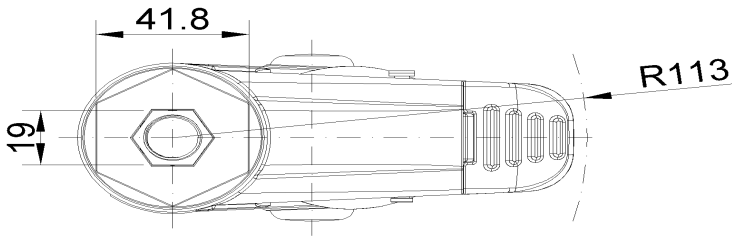
Advantages at a glance

|                            |           |
|----------------------------|-----------|
| Rolling Resistance         | ● ● ● ● ● |
| Operating Noise            | ● ● ● ● ● |
| Floor Surface Preservation | ● ● ● ● ● |

Dimensions



Mounting



\* For any deviation between metric and imperial spec, please refer to the metric spec.