

1157 57 Series Caster Series



Non-marking NBR Rubber (milling) Wheel Diameter x Wheel Width 100 x 37mm

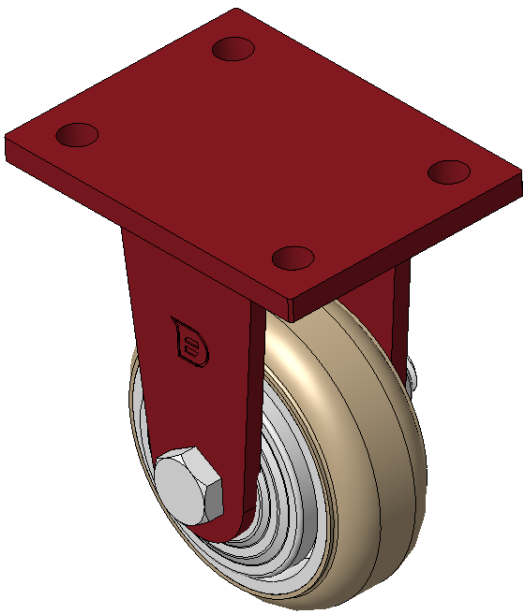
EAN

KS-11570400041011

Rigid Caster, Welded Caster Fork  
Red painted finish, Mounting Type - Top Plate, 90x60 Bolt Hole Spacing  
Cast Iron core, High-Quality, highly Resilient Rubber Wheel Tread, Cast Iron in natural color  
Bearings—Ball Bearings

Wheel surface: high quality and high elastic rubber wheel surface  
Wheel Center: iron core/cast iron core

Drawings are for reference only and may differ from the product



Picture may differ from original product

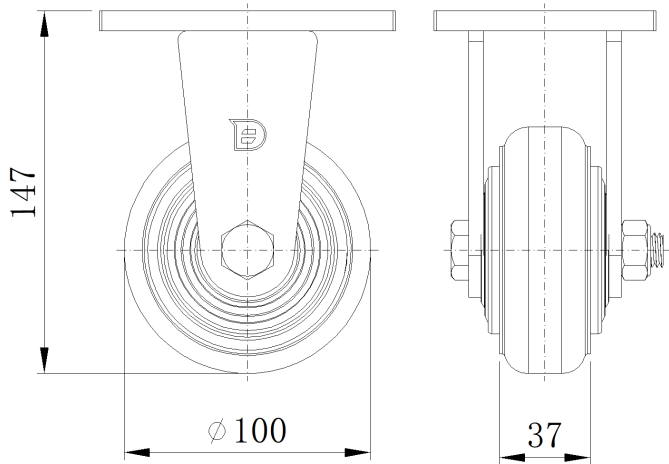
Technical Data

|  |                           |
|--|---------------------------|
| <input checked="" type="radio"/> Metric <input type="radio"/> Imperial |                           |
| Wheel Diameter   | 100mm                     |
| Wheel Width  | 34mm                      |
| Wheel Bearing  | Wheels With Ball Bearings |
| Plate Size   | 120 x 90mm                |
| Bolt Hole Spacing  | 90 x 60mm                 |
| Plate Hole   | 12mm                      |
| Overall Height   | 147mm                     |
| Hardness Of Tread  | 85±5° Shore A             |
| Load Capacity (Dynamic)  | 200kgs                    |
| Load Capacity (Static)   | 300kgs                    |
| Temperature  | -20°C to +80°C            |
| Fork Type  | Rigid Caster              |
| Stainless  | N/A                       |
| Electrical Conductivity  | N/A                       |
| Anti-Static  | N/A                       |
| Weight   | 2.17kgs                   |
| Standard   | ISO22883                  |

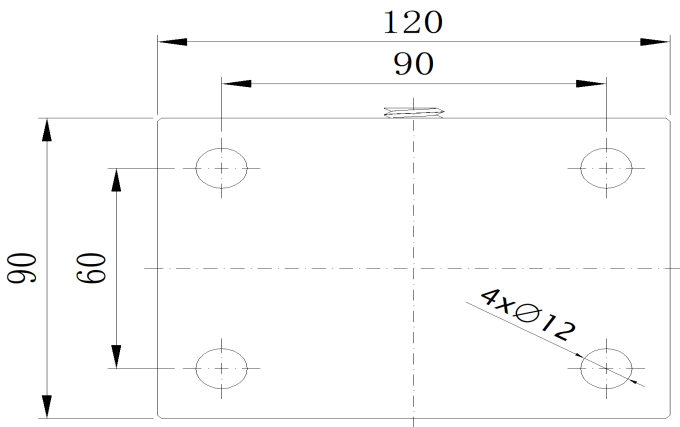
Advantages at a glance

|                            |           |
|----------------------------|-----------|
| Rolling Resistance         | ● ● ● ○ ○ |
| Operating Noise            | ● ● ● ● ○ |
| Floor Surface Preservation | ● ● ● ● ○ |

Dimensions



Mounting



\* For any deviation between metric and imperial spec, please refer to the metric spec.