



1157 57 Series Caster Series

Non-marking NBR Rubber (milling) Wheel Diameter x Wheel Width 100 x 37mm

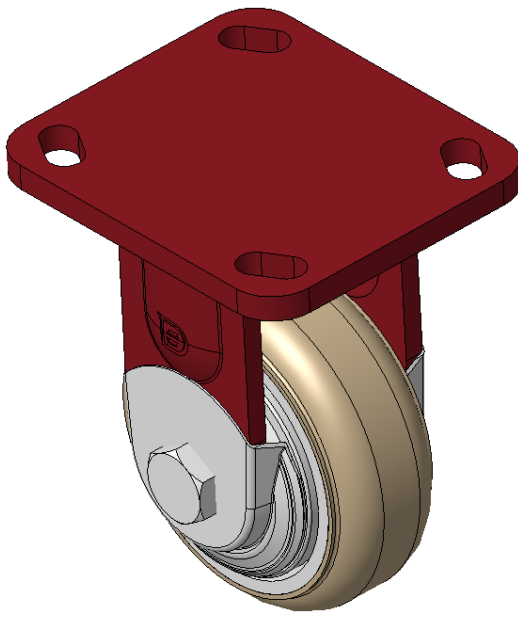
EAN

KS-11570400041061

Rigid Caster with Welded Caster Fork  
Red painted finish, Mounting Type - Top Plate, 85x70 Bolt Hole Spacing  
Cast Iron core, High-Quality, highly Resilient Rubber Wheel Tread, Cast Iron in natural color  
Bearings—Ball Bearings with special Anti-thread wheel cover

Wheel surface: Made of high-quality, highly elastic rubber  
Wheel Center: iron core/cast iron core

Drawings are for reference only and may differ from the product



Picture may differ from original product

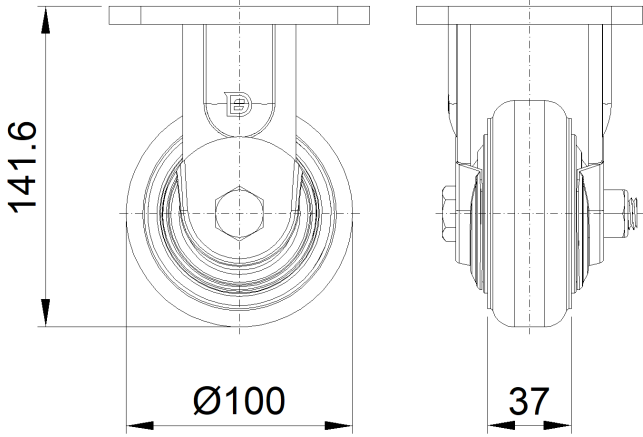
Technical Data

<input checked="" type="radio"/> Metric <input type="radio"/> Imperial	
Wheel Diameter	100mm
Wheel Width	37mm
Wheel Bearing	Wheels With Ball Bearings
Plate Size	100 x 115mm
Bolt Hole Spacing	85 x 70mm
Plate Hole	20 x 11mm
Overall Height	141.6mm
Hardness Of Tread	85±5° Shore A
Load Capacity (Dynamic)	200kgs
Load Capacity (Static)	300kgs
Temperature	-20°C to +80°C
Fork Type	Rigid Caster
Stainless	N/A
Electrical Conductivity	N/A
Anti-Static	N/A
Weight	2.25kgs
Standard	ISO22883

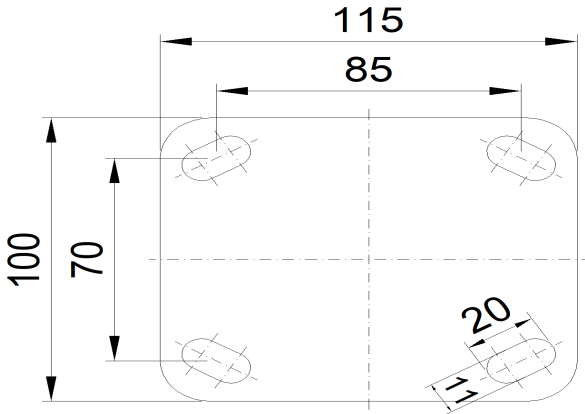
Advantages at a glance

Rolling Resistance	● ● ● ○ ○
Operating Noise	● ● ● ● ○
Floor Surface Preservation	● ● ● ● ○

Dimensions



Mounting



\* For any deviation between metric and imperial spec, please refer to the metric spec.