

1157 57 Series Caster Series



Non-marking NBR Rubber (milling) Wheel Diameter x Wheel Width 100 x 37mm

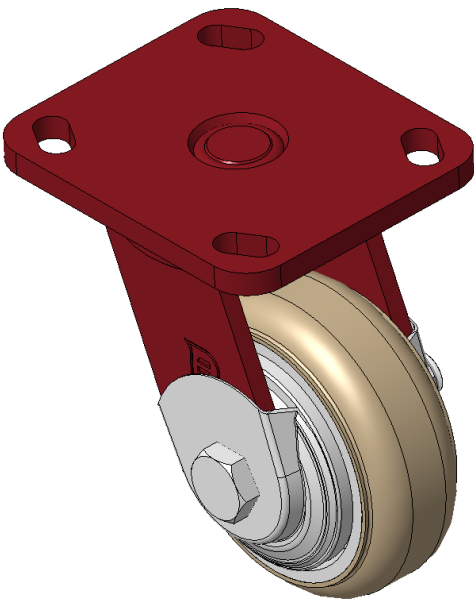
EAN

KS-11570400042061

Swivel Caster with Welded Caster Fork, red paint finish.
Mounting Type - Top Plate, 85 x 70 Bolt Hole Spacing
Cast Iron core, High-Quality, highly Resilient Rubber Wheel Tread, Cast Iron in natural finish
Bearings—Ball Bearings with special Anti-thread wheel cover

Wheel surface: high quality and high elastic rubber wheel surface
Wheel Center: iron core/cast iron core

Drawings are for reference only and may differ from the product



Picture may differ from original product

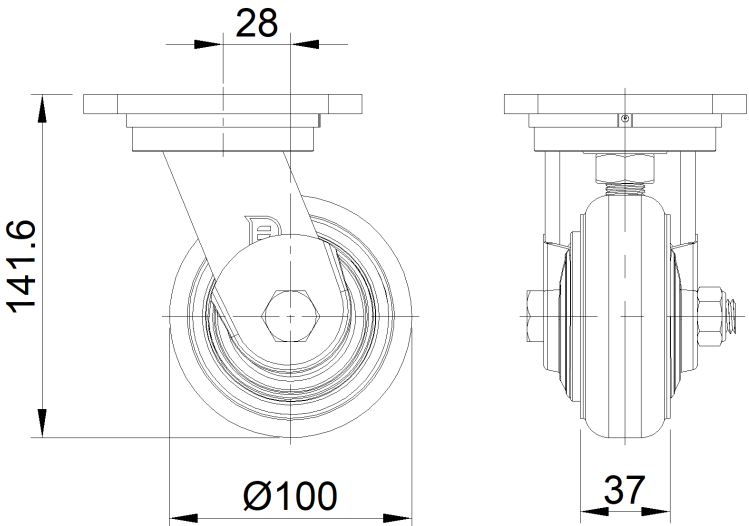
Technical Data

<input checked="" type="radio"/> Imperial <input type="radio"/> Metric	
Wheel Diameter	4 "
Wheel Width	1-1/2 "
Wheel Bearing	Wheels With Ball Bearings
Plate Size	4-9/16 " x 4-3/8 "
Bolt Hole Spacing	3-3/8 " x 2-3/4 "
Plate Hole	13/16 " x 3/8 "
Offset	1-1/8 "
Swivel Interference	6-3/8 "
Overall Height	7-7/8 "
Swivel Radius	3-3/16 "
Hardness Of Tread	85±5° Shore A
Load Capacity (Dynamic)	441lbs
Load Capacity (Static)	661lbs
Temperature	-4°F to +176°F
Fork Type	Swivel Caster
Stainless	N/A
Electrical Conductivity	N/A
Anti-Static	N/A
Weight	5.8lbs
Standard	ISO22883

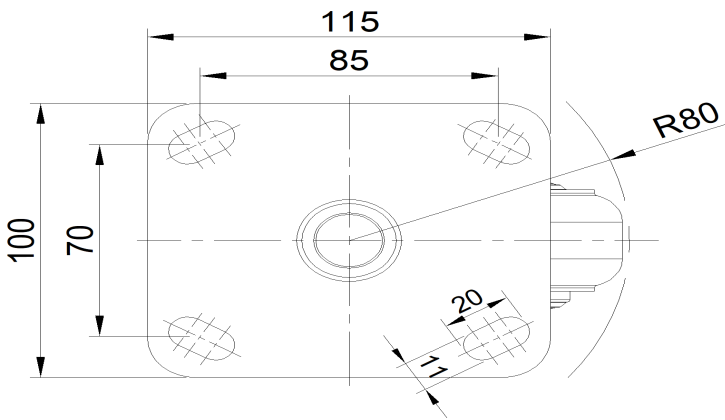
Advantages at a glance

Rolling Resistance	● ● ● ○ ○
Operating Noise	● ● ● ● ○
Floor Surface Preservation	● ● ● ● ○

Dimensions



Mounting



* For any deviation between metric and imperial spec, please refer to the metric spec.