



1157 57 Series Caster Series

MRC (Transparent) Wheel Diameter × Wheel Width 100 x 32mm

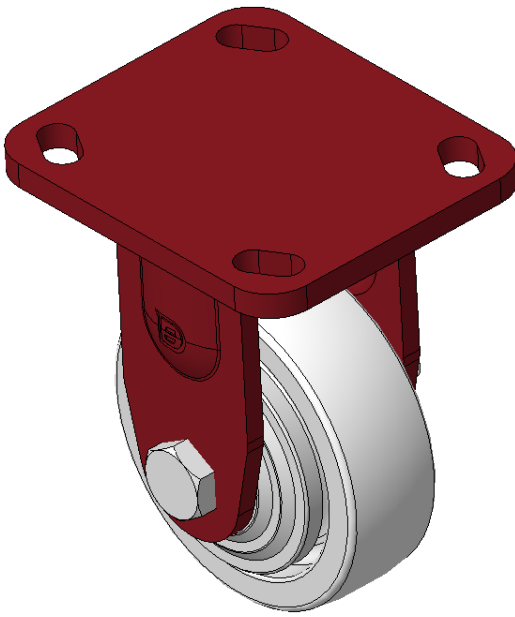
EAN

KS-11570400071051

Rigid Caster, Welded Caster Fork - Hole spacing 85x70 Surface sprayed with red paint, Top Plate Mounting Type device Reinforced Polypropylene and Wheel Tread, Natural Color Bearing - Ball Bearing

Wheel tread: Thermoplastic (PA6)
Wheel Center: Thermoplastic (PA6)

Drawings are for reference only and may differ from the product



Picture may differ from original product

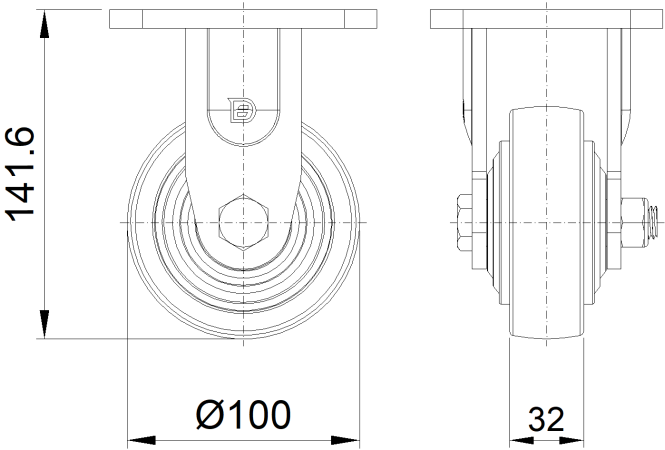
Technical Data

| | |
|--|---------------------------|
| <input checked="" type="radio"/> Metric <input type="radio"/> Imperial | |
| Wheel Diameter | 100mm |
| Wheel Width | 32mm |
| Wheel Bearing | Wheels With Ball Bearings |
| Plate Size | 100 x 115mm |
| Bolt Hole Spacing | 85 x 70mm |
| Plate Hole | 20 x 11mm |
| Overall Height | 141.6mm |
| Hardness Of Tread | 75±5° Shore D |
| Load Capacity (Dynamic) | 250kgs |
| Load Capacity (Static) | 375kgs |
| Temperature | -20°C to +80°C |
| Fork Type | Rigid Caster |
| Stainless | N/A |
| Electrical Conductivity | N/A |
| Anti-Static | N/A |
| Weight | 1.64kgs |
| Standard | ISO22883 |

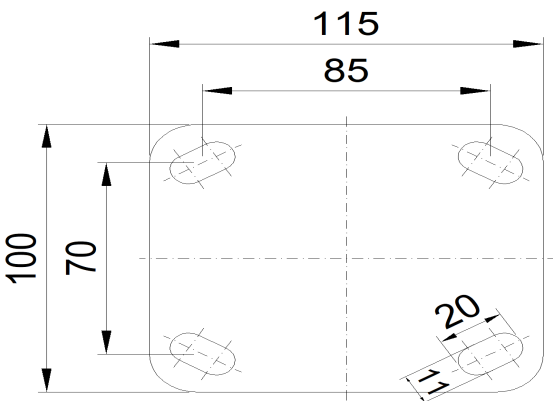
Advantages at a glance

| | |
|----------------------------|-----------|
| Rolling Resistance | ● ● ● ● ● |
| Operating Noise | ● ● ○ ○ ○ |
| Floor Surface Preservation | ● ● ○ ○ ○ |

Dimensions



Mounting



* For any deviation between metric and imperial spec, please refer to the metric spec.