



1157 57 Series Caster Series

Non-marking NBR Rubber (milling) Wheel Diameter x Wheel Width 125 x 40mm

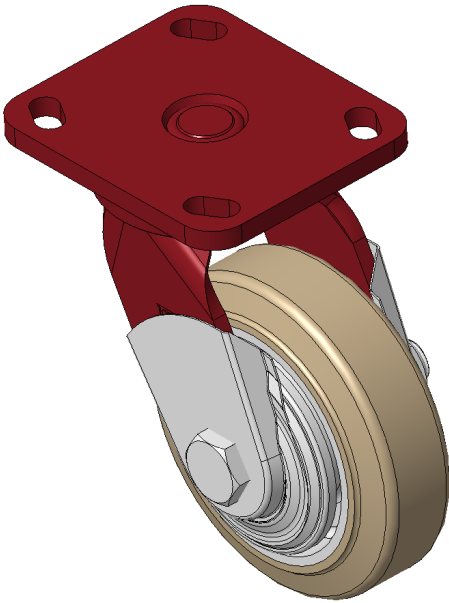
EAN

KS-11570500042041

Swivel Caster with Welded Caster Fork, red paint finish.  
Mounting Type - Top Plate, 85x70 Bolt Hole Spacing  
Cast Iron core, High-Quality, highly Resilient Rubber Wheel Tread  
Cast Iron finish, Ball Bearings, and a special anti-tangle wheel cap.

Wheel surface: Made of high-quality, highly elastic rubber  
Wheel Center: iron core/cast iron core

Drawings are for reference only and may differ from the product



Picture may differ from original product

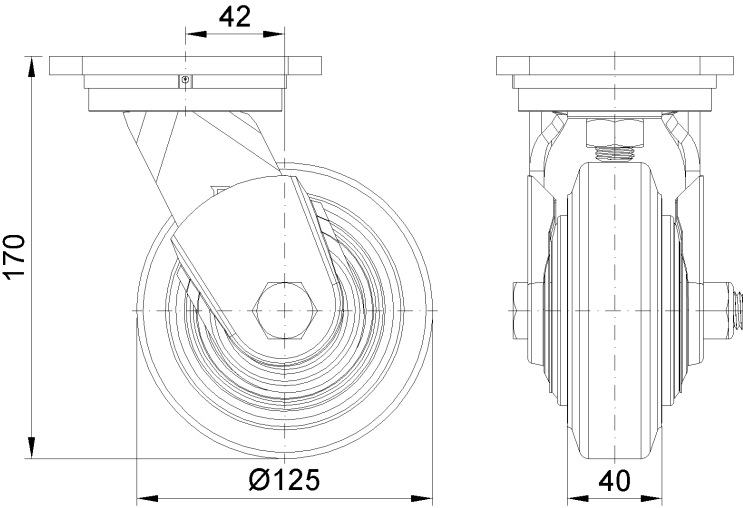
Technical Data

|  |                           |
|--|---------------------------|
| <input checked="" type="radio"/> Metric <input type="radio"/> Imperial |                           |
| Wheel Diameter   | 125mm                     |
| Wheel Width  | 40mm                      |
| Wheel Bearing  | Wheels With Ball Bearings |
| Plate Size   | 115 x 100mm               |
| Bolt Hole Spacing  | 85 x 70mm                 |
| Plate Hole   | 20 x 11mm                 |
| Offset   | 42mm                      |
| Swivel Interference  | 214mm                     |
| Overall Height   | 170mm                     |
| Swivel Radius  | 107mm                     |
| Hardness Of Tread  | 85±5° Shore A             |
| Load Capacity (Dynamic)  | 250kgs                    |
| Load Capacity (Static)   | 375kgs                    |
| Temperature  | -20°C to +80°C            |
| Fork Type  | Swivel Caster             |
| Stainless  | N/A                       |
| Electrical Conductivity  | N/A                       |
| Anti-Static  | N/A                       |
| Weight   | 3.31kgs                   |
| Standard   | ISO22883                  |

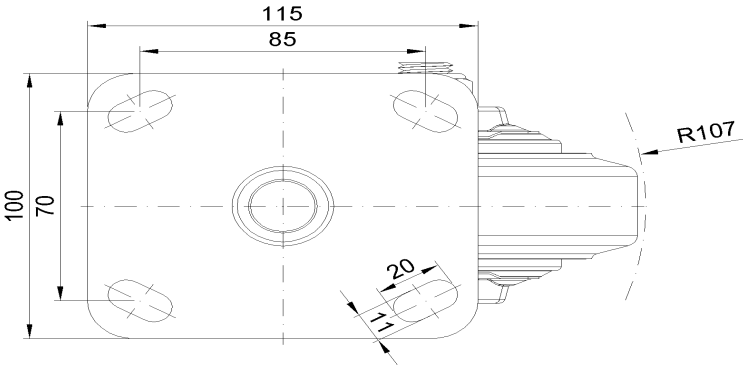
Advantages at a glance

|                            |           |
|----------------------------|-----------|
| Rolling Resistance         | ● ● ● ○ ○ |
| Operating Noise            | ● ● ● ● ○ |
| Floor Surface Preservation | ● ● ● ● ○ |

Dimensions



Mounting



\* For any deviation between metric and imperial spec, please refer to the metric spec.