



1157 57 Series Caster Series

Non-marking NBR Rubber (milling) Wheel Diameter x Wheel Width 125 x 40mm

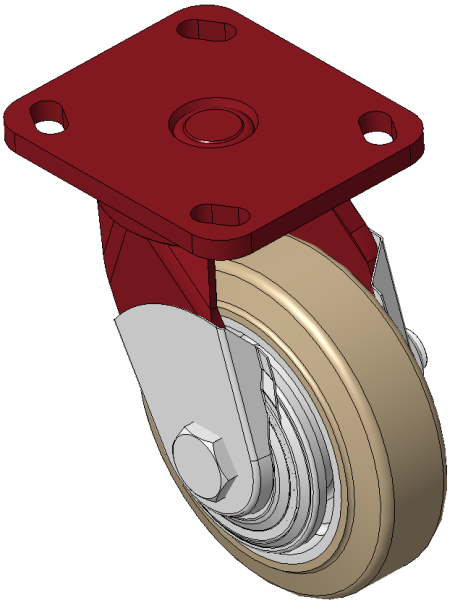
EAN

KS-11570500042061

Swivel Caster with Welded Caster Fork, red paint finish. Mounting Type - Top Plate, 85x70 Bolt Hole Spacing Cast Iron Wheel Center, High-Quality, highly Resilient Rubber tread, Cast Iron in Natural Color Bearing—Ball Bearing with special anti-wrap wheel cap

Wheel Tread: Made of high-quality and highly elastic rubber  
Wheel Center: iron core/cast iron core

Drawings are for reference only and may differ from the product



Picture may differ from original product

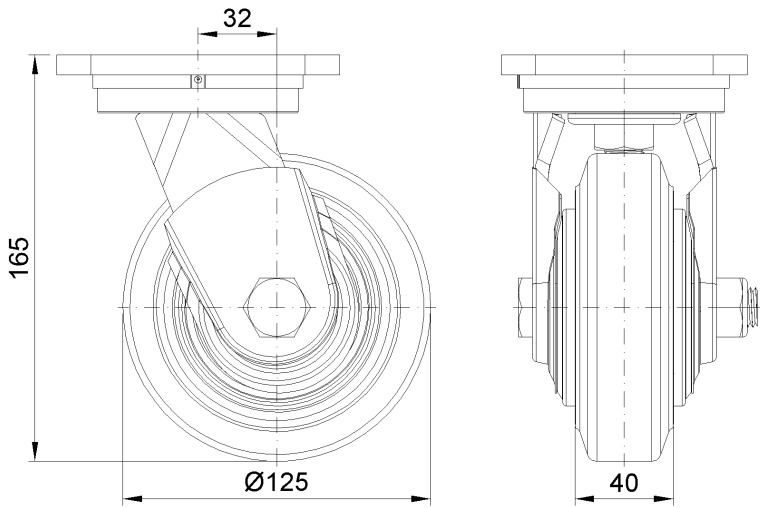
Technical Data

|  |                           |
|--|---------------------------|
| <input checked="" type="radio"/> Imperial <input type="radio"/> Metric |                           |
| Wheel Diameter   | 5 "                       |
| Wheel Width  | 1-5/8 "                   |
| Wheel Bearing  | Wheels With Ball Bearings |
| Plate Size   | 4-3/8 " x 4 "             |
| Bolt Hole Spacing  | 3-3/8 " x 2-3/4 "         |
| Plate Hole   | 13/16 " x 3/8 "           |
| Offset   | 1-5/16 "                  |
| Swivel Interference  | 7-11/16 "                 |
| Overall Height   | 6-1/2 "                   |
| Swivel Radius  | 3-7/8 "                   |
| Hardness Of Tread  | 85±5° Shore A             |
| Load Capacity (Dynamic)  | 551lbs                    |
| Load Capacity (Static)   | 827lbs                    |
| Temperature  | -4°F to +176°F            |
| Fork Type  | Swivel Caster             |
| Stainless  | N/A                       |
| Electrical Conductivity  | N/A                       |
| Anti-Static  | N/A                       |
| Weight   | 7.3lbs                    |
| Standard   | ISO22883                  |

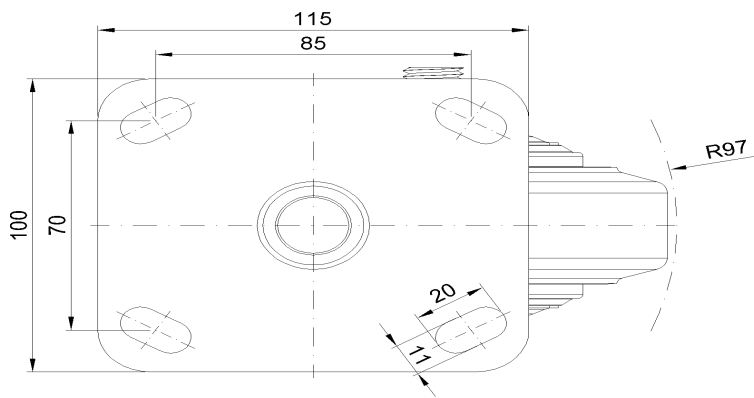
Advantages at a glance

|                            |           |
|----------------------------|-----------|
| Rolling Resistance         | ● ● ● ○ ○ |
| Operating Noise            | ● ● ● ● ○ |
| Floor Surface Preservation | ● ● ● ● ○ |

Dimensions



Mounting



\* For any deviation between metric and imperial spec, please refer to the metric spec.