



1157 57 Series Caster Series

Non-marking NBR Rubber (milling) Wheel Diameter x Wheel Width 150 x 40mm

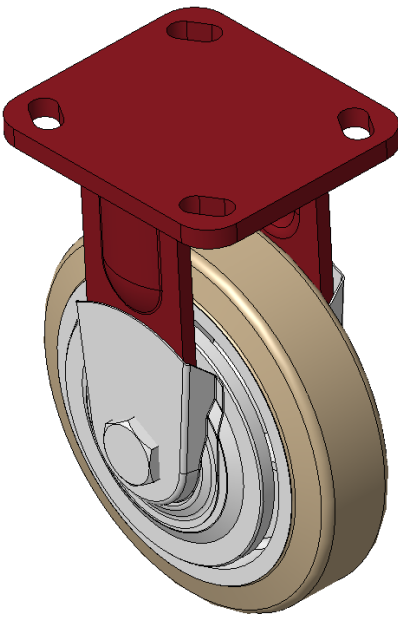
EAN

KS-11570600041041A

Rigid castors, Welded Caster Fork Surface sprayed with red paint, Top Plate installation device, Hole spacing 85x70 Cast Iron Wheel Center, high quality and high Resilient Rubber Wheel Tread, Cast Iron in original color Bearing—Ball Bearing with special Anti-thread wheel covers

Wheel Tread: high quality and high elastic rubber wheel surface
Wheel Center: iron core/cast iron core

Drawings are for reference only and may differ from the product



Picture may differ from original product

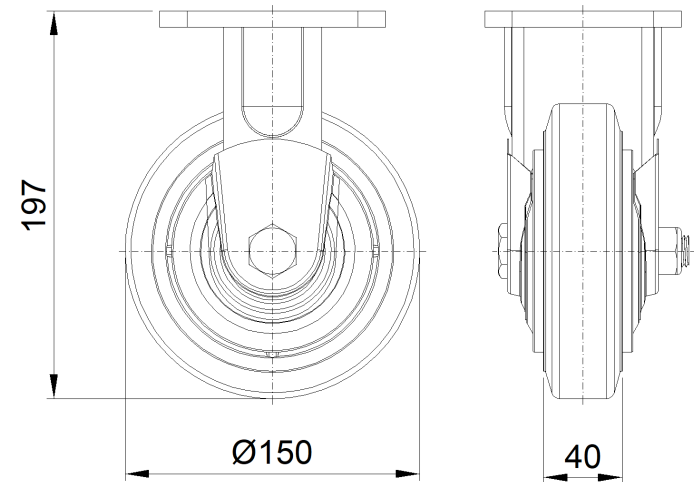
Technical Data

| | |
|--|---------------------------|
| <input checked="" type="radio"/> Imperial <input type="radio"/> Metric | |
| Wheel Diameter | 6 " |
| Wheel Width | 1-5/8 " |
| Wheel Bearing | Wheels With Ball Bearings |
| Plate Size | 4-9/16 " x 4 " |
| Bolt Hole Spacing | 3-3/8 " x 2-3/4 " |
| Plate Hole | 13/16 " x 3/8 " |
| Overall Height | 7-7/8 " |
| Hardness Of Tread | 85±5° Shore A |
| Load Capacity (Dynamic) | 661lbs |
| Load Capacity (Static) | 992lbs |
| Temperature | -4°F to +176°F |
| Fork Type | Rigid Caster |
| Stainless | N/A |
| Electrical Conductivity | N/A |
| Anti-Static | N/A |
| Weight | 6.8lbs |
| Standard | ISO22883 |

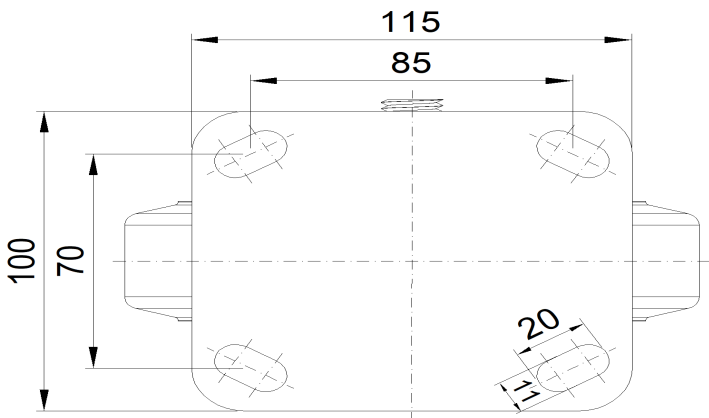
Advantages at a glance

| | |
|----------------------------|-----------|
| Rolling Resistance | ● ● ● ○ ○ |
| Operating Noise | ● ● ● ● ○ |
| Floor Surface Preservation | ● ● ● ● ○ |

Dimensions



Mounting



* For any deviation between metric and imperial spec, please refer to the metric spec.