

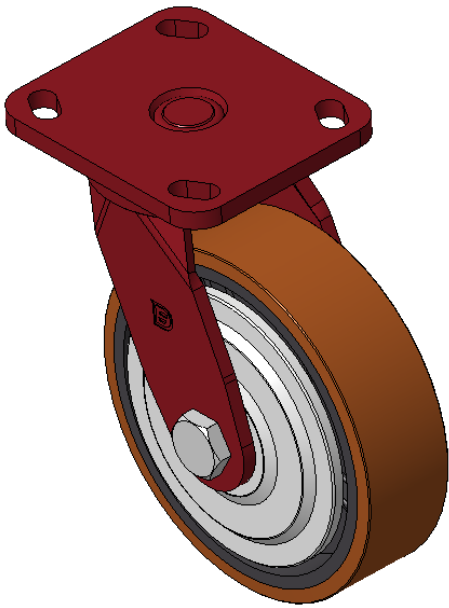


1157 57 Series Caster Series

QPU (brown flat) Wheel Diameter x Wheel Width 150 x 42mm

EAN

KS-11570600532081



Picture may differ from original product

Swivel castor, Welded Caster Fork, red painted Top Plate Mounting Type, Hole spacing 85 x 70 Cast Iron Wheel Center, high quality polyurethane wheel tread, Cast Iron brown Bearing - Ball Bearing

Wheel tread: Made of high quality polyurethane  
Wheel Center: iron core/cast iron core

Drawings are for reference only and may differ from the product

Technical Data

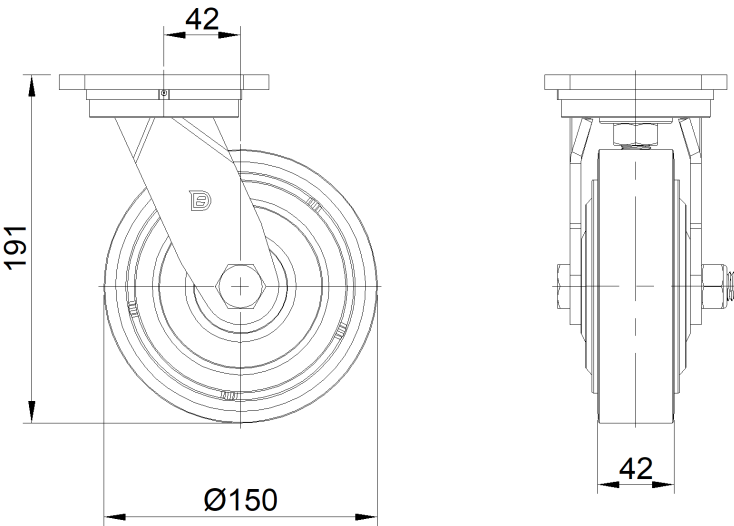
☒ Metric ☐ Imperial

|                         |                           |
|-------------------------|---------------------------|
| Wheel Diameter          | 150mm                     |
| Wheel Width             | 42mm                      |
| Wheel Bearing           | Wheels With Ball Bearings |
| Plate Size              | 115 x 100mm               |
| Bolt Hole Spacing       | 85 x 70mm                 |
| Plate Hole              | 20 x 11mm                 |
| Offset                  | 42mm                      |
| Swivel Interference     | 238mm                     |
| Overall Height          | 191mm                     |
| Swivel Radius           | 119mm                     |
| Hardness Of Tread       | 92±5° Shore A             |
| Load Capacity (Dynamic) | 600kgs                    |
| Load Capacity (Static)  | 900kgs                    |
| Temperature             | -20°C to +70°C            |
| Fork Type               | Swivel Caster             |
| Stainless               | N/A                       |
| Electrical Conductivity | N/A                       |
| Anti-Static             | N/A                       |
| Weight                  | 3.58kgs                   |
| Standard                | ISO22883                  |

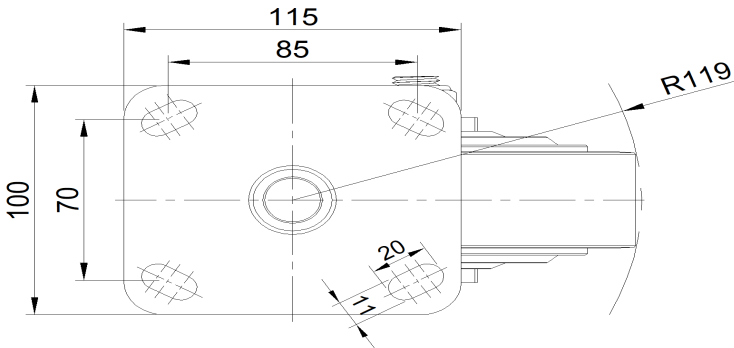
Advantages at a glance

|                            |           |
|----------------------------|-----------|
| Rolling Resistance         | ● ● ● ● ● |
| Operating Noise            | ● ● ● ● ● |
| Floor Surface Preservation | ● ● ● ● ● |

Dimensions



Mounting



\* For any deviation between metric and imperial spec, please refer to the metric spec.