



1157 57 Series Caster Series

QPU (Brown round) Wheel Diameter × Wheel Width 150 x 42mm

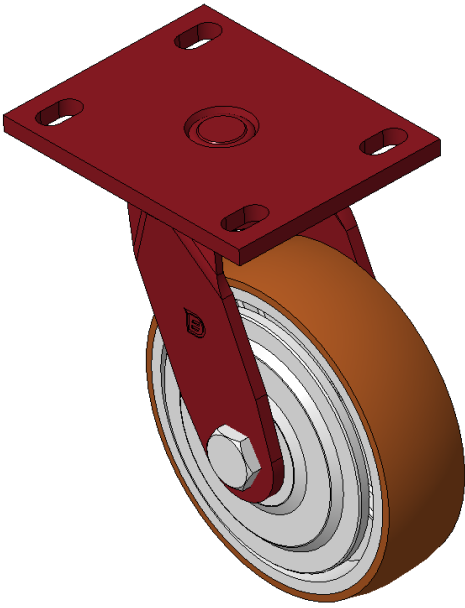
EAN

KS-11570600532111

Swivel Caster with Welded Caster Fork, red painted finish  
Mounting Type - Top Plate, 110 x 75 Bolt Hole Spacing  
Cast Iron Wheel Center, High Quality Polyurethane Wheel Tread, Cast Iron brown  
Bearing - Ball Bearing

Wheel tread: Made of high-quality polyurethane  
Wheel Center: iron core/cast iron core

Drawings are for reference only and may differ from the product



Picture may differ from original product

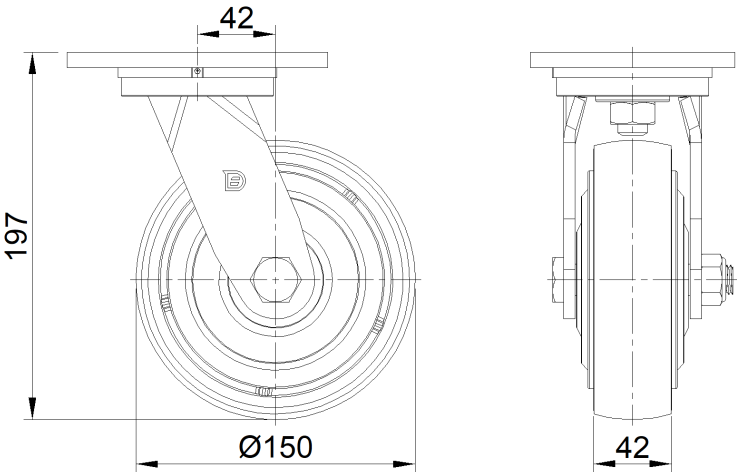
Technical Data

<input checked="" type="radio"/> Imperial <input type="radio"/> Metric	
Wheel Diameter	6 "
Wheel Width	1-11/16 "
Wheel Bearing	Wheels With Ball Bearings
Plate Size	5-9/16 " x 4-3/8 "
Bolt Hole Spacing	4-5/16 " x3"
Plate Hole	7/8 " x 9/16 "
Offset	1-11/16 "
Swivel Interference	12-11/16 "
Overall Height	7-7/8 "
Swivel Radius	4-3/4 "
Hardness Of Tread	92±5° Shore A
Load Capacity (Dynamic)	1213lbs
Load Capacity (Static)	1819lbs
Temperature	-4°F to +158°F
Fork Type	Swivel Caster
Stainless	N/A
Electrical Conductivity	N/A
Anti-Static	N/A
Weight	8.8lbs
Standard	ISO22883

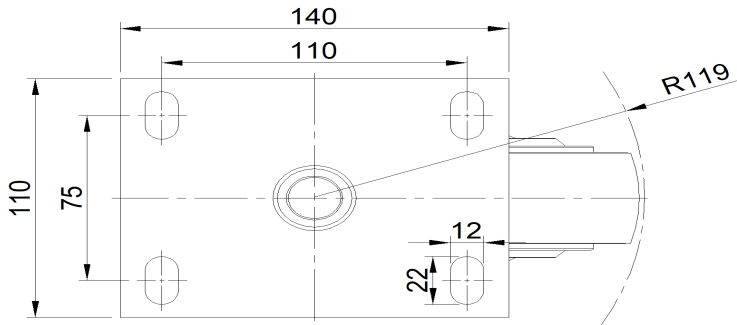
Advantages at a glance

Rolling Resistance	● ● ● ● ●
Operating Noise	● ● ● ● ●
Floor Surface Preservation	● ● ● ● ●

Dimensions



Mounting



\* For any deviation between metric and imperial spec, please refer to the metric spec.