



1157 57 Series Caster Series

QPU (Brown round) Wheel Diameter × Wheel Width 150 x 42mm

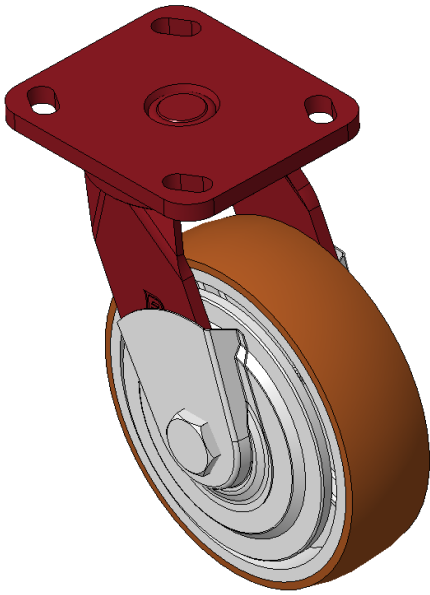
EAN

KS-11570600532121A

Swivel Caster with Welded Caster Fork, red painted finish
Mounting Type - Top Plate, 85x70 Bolt Hole Spacing
Cast Iron core with High Quality Polyurethane Wheel Tread, Cast Iron brown
Bearings—Ball Bearings with special Anti-thread wheel cover

Wheel tread: Made of high-quality polyurethane
Wheel Center: iron core/cast iron core

Drawings are for reference only and may differ from the product



Picture may differ from original product

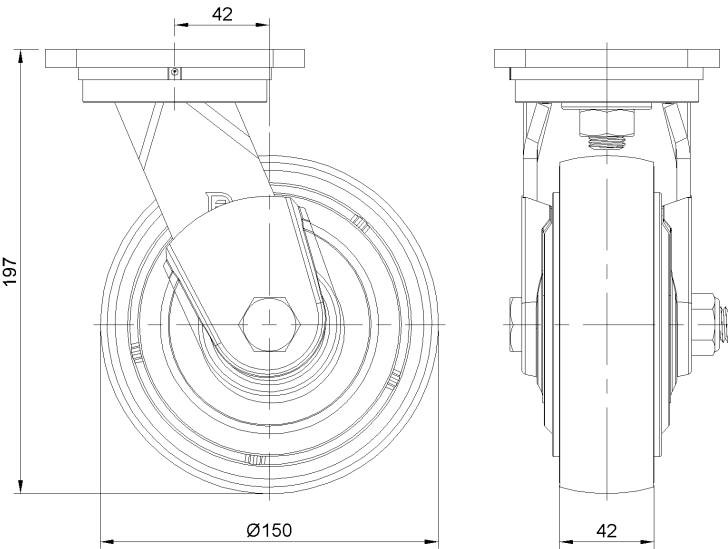
Technical Data

| | |
|--|---------------------------|
| <input checked="" type="radio"/> Imperial <input type="radio"/> Metric | |
| Wheel Diameter | 6 " |
| Wheel Width | 1-11/16 " |
| Wheel Bearing | Wheels With Ball Bearings |
| Plate Size | 4-9/16 " x 4 " |
| Bolt Hole Spacing | 3-3/8 " x 2-3/4 " |
| Plate Hole | 13/16 " x 3/8 " |
| Offset | 1-11/16 " |
| Swivel Interference | 9-1/2 " |
| Overall Height | 7-7/8 " |
| Swivel Radius | 4-3/4 " |
| Hardness Of Tread | 92±5° Shore A |
| Load Capacity (Dynamic) | 1323lbs |
| Load Capacity (Static) | 1984lbs |
| Temperature | -4°F to +158°F |
| Fork Type | Swivel Caster |
| Stainless | N/A |
| Electrical Conductivity | N/A |
| Anti-Static | N/A |
| Weight | 8.0lbs |
| Standard | ISO22883 |

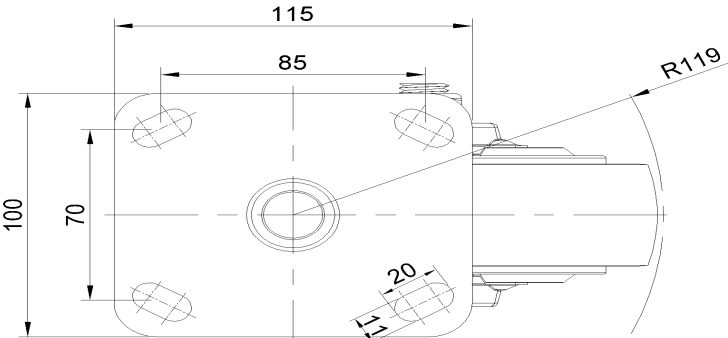
Advantages at a glance

| | |
|----------------------------|-----------|
| Rolling Resistance | ● ● ● ● ● |
| Operating Noise | ● ● ● ● ● |
| Floor Surface Preservation | ● ● ● ● ● |

Dimensions



Mounting



* For any deviation between metric and imperial spec, please refer to the metric spec.