

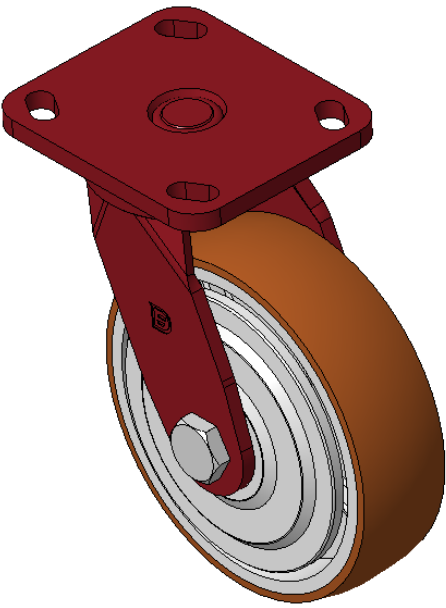


1157 57 Series Caster Series

QPU (Brown round) Wheel Diameter × Wheel Width 150 x 42mm

EAN

KS-11570600532181



Picture may differ from original product

Swivel Caster with Welded Caster Fork, red painted finish Mounting Type - Top Plate, 85 x 70 Bolt Hole Spacing Cast Iron Wheel Center with High Quality Polyurethane tread, Cast Iron brown Bearing—Ball Bearing

Wheel tread: Made of high quality polyurethane  
Wheel Center: iron core/cast iron core

Drawings are for reference only and may differ from the product

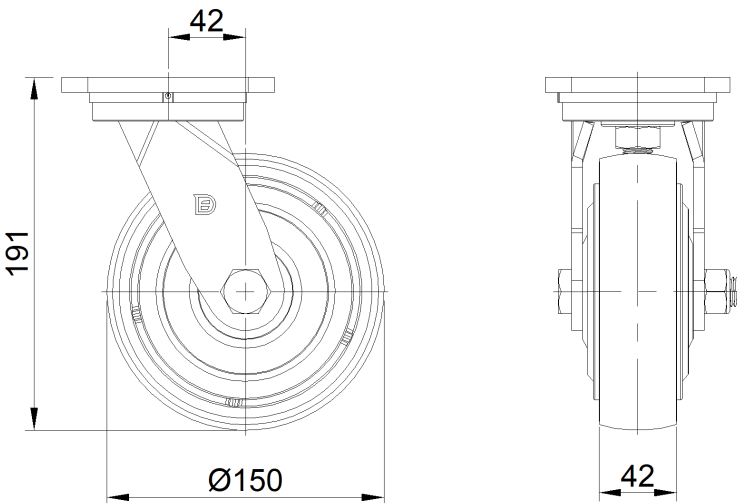
Technical Data

|  |                           |
|--|---------------------------|
| <input checked="" type="radio"/> Metric <input type="radio"/> Imperial |                           |
| Wheel Diameter   | 150mm                     |
| Wheel Width  | 42mm                      |
| Wheel Bearing  | Wheels With Ball Bearings |
| Plate Size   | 115 x 100mm               |
| Bolt Hole Spacing  | 85 x 70mm                 |
| Plate Hole   | 20 x 11mm                 |
| Offset   | 42mm                      |
| Swivel Interference  | 238mm                     |
| Overall Height   | 191mm                     |
| Swivel Radius  | 119mm                     |
| Hardness Of Tread  | 92±5° Shore A             |
| Load Capacity (Dynamic)  | 550kgs                    |
| Load Capacity (Static)   | 825kgs                    |
| Temperature  | -20°C to +70°C            |
| Fork Type  | Swivel Caster             |
| Stainless  | N/A                       |
| Electrical Conductivity  | N/A                       |
| Anti-Static  | N/A                       |
| Weight   | 3.50kgs                   |
| Standard   | ISO22883                  |

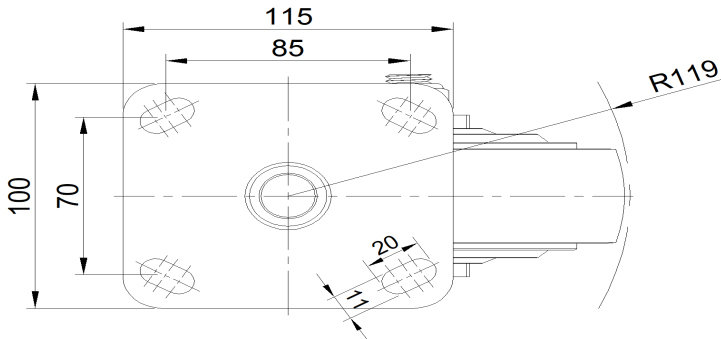
Advantages at a glance

|                            |           |
|----------------------------|-----------|
| Rolling Resistance         | ● ● ● ● ● |
| Operating Noise            | ● ● ● ● ● |
| Floor Surface Preservation | ● ● ● ● ● |

Dimensions



Mounting



\* For any deviation between metric and imperial spec, please refer to the metric spec.