



1157 57 Series Caster Series

EQPU (brown arc) Wheel Diameter x Wheel Width 150 x 42mm

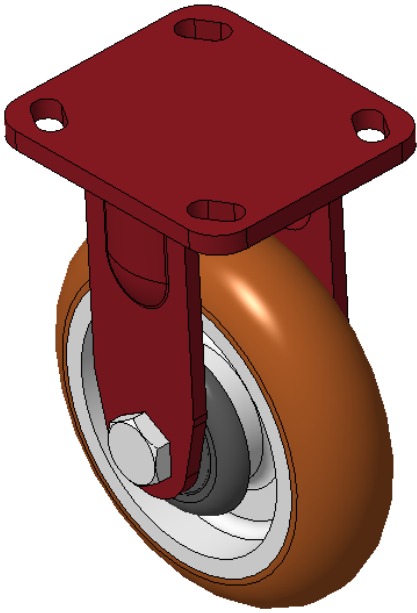
EAN

KS-11570600551141

Rigid Caster, Welded Caster Fork - Hole spacing 85x70 Surface sprayed with red paint, Mounting Type - Top Plate Cast Iron Wheel Center, High Quality Polyurethane Wheel Tread Iron brown, Bearing - Ball Bearing.

Wheel tread: Made of high quality polyurethane
Wheel Center: iron core/cast iron core

Drawings are for reference only and may differ from the product



Picture may differ from original product

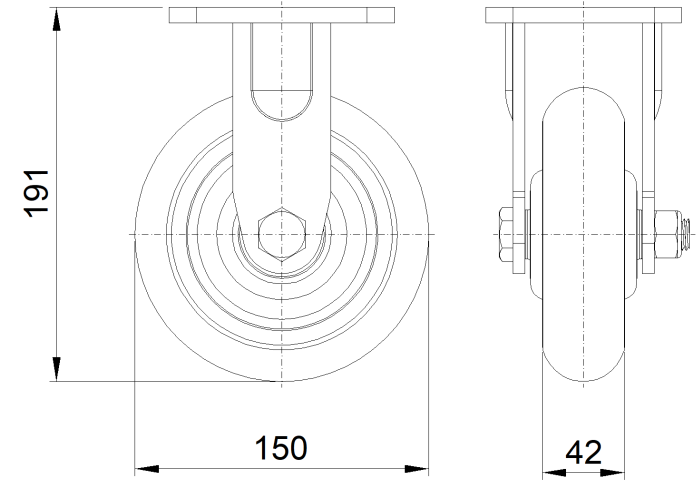
Technical Data

<input checked="" type="radio"/> Imperial <input type="radio"/> Metric	
Wheel Diameter	6 "
Wheel Width	1-11/16 "
Wheel Bearing	Wheels With Ball Bearings
Plate Size	4 " x 4-9/16 "
Bolt Hole Spacing	3-3/8 " x 2-3/4 "
Plate Hole	13/16 " x 3/8 "
Overall Height	7-9/16 "
Hardness Of Tread	92±5° Shore A
Load Capacity (Dynamic)	1213lbs
Load Capacity (Static)	1819lbs
Temperature	-4°F to +158°F
Fork Type	Rigid Caster
Stainless	N/A
Electrical Conductivity	N/A
Anti-Static	N/A
Weight	7.7lbs
Standard	ISO22883

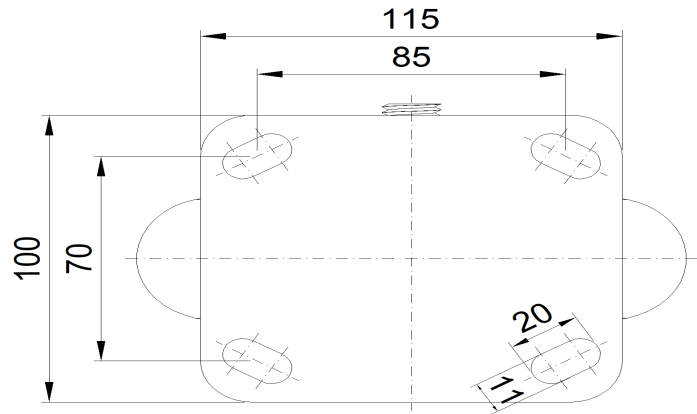
Advantages at a glance

Rolling Resistance	• • • • •
Operating Noise	• • • • •
Floor Surface Preservation	• • • • •

Dimensions



Mounting



* For any deviation between metric and imperial spec, please refer to the metric spec.