

1157 57 Series Caster Series



Non-marking NBR Rubber (milling) Wheel Diameter x Wheel Width 200 x 44mm

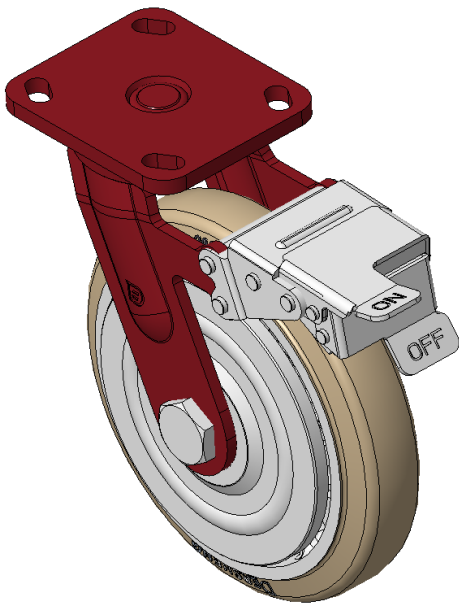
EAN

KS-11570800044071

Casters with front brake and With locking system, Welded Caster Fork  
Red painted finish, Mounting Type - Top Plate, 85x70 Bolt Hole Spacing  
Cast Iron Wheel Center, High-Quality, highly Resilient Rubber Wheel Tread, Cast Iron in natural color  
Bearings—Ball Bearings

Wheel surface: Made of high-quality and highly elastic rubber  
Wheel Center: iron core/cast iron core

Drawings are for reference only and may differ from the product



Picture may differ from original product

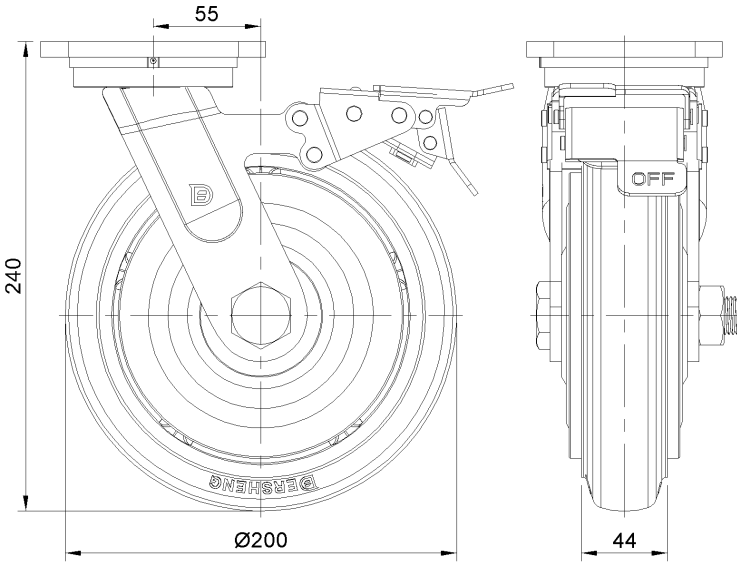
Technical Data

<input checked="" type="radio"/> Metric <input type="radio"/> Imperial	
Wheel Diameter	200mm
Wheel Width	44mm
Wheel Bearing	Wheels With Ball Bearings
Plate Size	115 x 100mm
Bolt Hole Spacing	85 x 70mm
Plate Hole	20 x 11mm
Offset	55mm
Swivel Interference	376mm
Overall Height	240mm
Swivel Radius	188mm
Hardness Of Tread	85±5° Shore A
Load Capacity (Dynamic)	350kgs
Load Capacity (Static)	525kgs
Temperature	-20°C to +80°C
Fork Type	Swivel Caster With Front Brake
Stainless	N/A
Electrical Conductivity	N/A
Anti-Static	N/A
Weight	5.38kgs
Standard	ISO22883

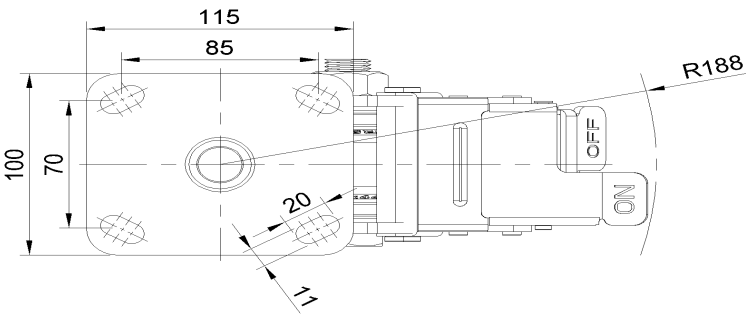
Advantages at a glance

Rolling Resistance	● ● ● ○ ○
Operating Noise	● ● ● ● ○
Floor Surface Preservation	● ● ● ● ○

Dimensions



Mounting



\* For any deviation between metric and imperial spec, please refer to the metric spec.