



1157 57 Series Caster Series

MRC (Transparent) Wheel Diameter x Wheel Width 200 x 50mm

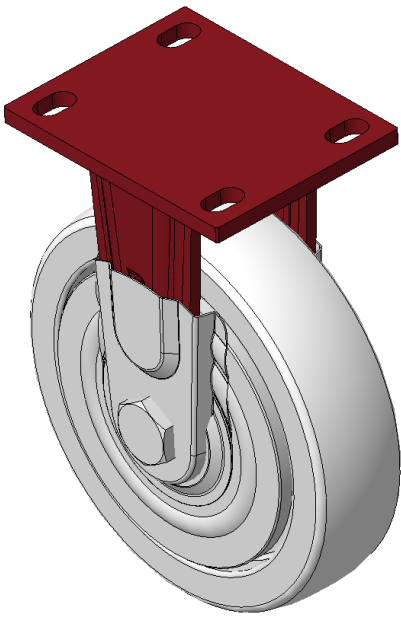
EAN

KS-11570800071061

Rigid Caster with Welded Caster Fork
Red painted finish, Mounting Type - Top Plate, 110x75 Bolt Hole Spacing
Reinforced Polypropylene Wheel Center, natural Wheel Tread
Bearing—Ball Bearing with special anti-wrap wheel cover

Wheel tread: Thermoplastic (PA6)
Wheel Center: Thermoplastic (PA6)

Drawings are for reference only and may differ from the product



Picture may differ from original product

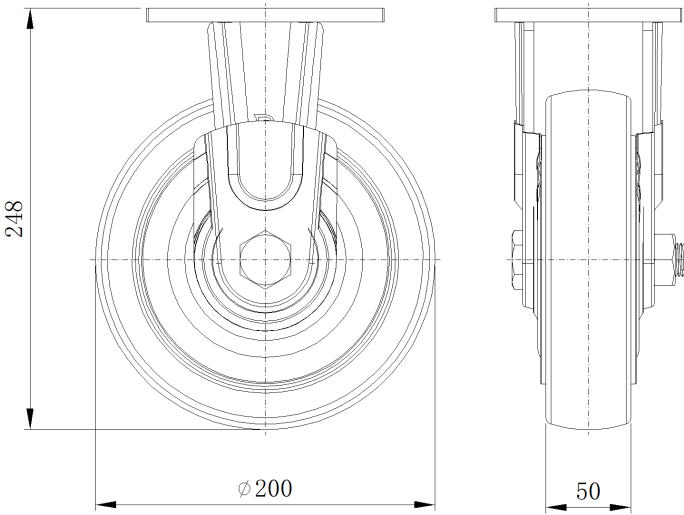
Technical Data

<input checked="" type="radio"/> Imperial <input type="radio"/> Metric	
Wheel Diameter	8 "
Wheel Width	2 "
Wheel Bearing	Wheels With Ball Bearings
Plate Size	5-9/16 " x 4-3/8 "
Bolt Hole Spacing	4-5/16 " x3"
Plate Hole	7/8 " x 9/16 "
Overall Height	9-15/16 "
Hardness Of Tread	75±5° Shore D
Load Capacity (Dynamic)	992lbs
Load Capacity (Static)	1488lbs
Temperature	-4°F to +176°F
Fork Type	Rigid Caster
Stainless	N/A
Electrical Conductivity	N/A
Anti-Static	N/A
Weight	7.9lbs
Standard	ISO22883

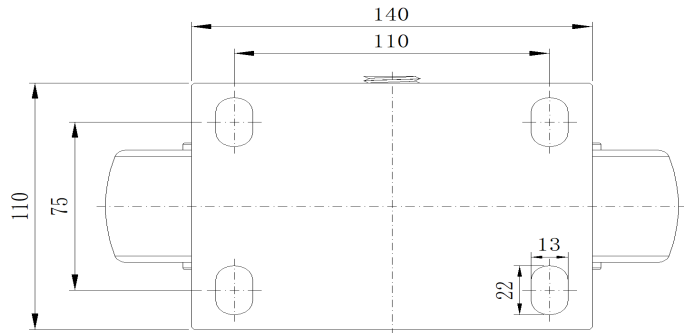
Advantages at a glance

Rolling Resistance	● ● ● ● ●
Operating Noise	● ● ○ ○ ○
Floor Surface Preservation	● ● ○ ○ ○

Dimensions



Mounting



* For any deviation between metric and imperial spec, please refer to the metric spec.