



1157 57 Series Caster Series

QPU (brown round) Wheel Diameter x Wheel Width 200 x 50mm

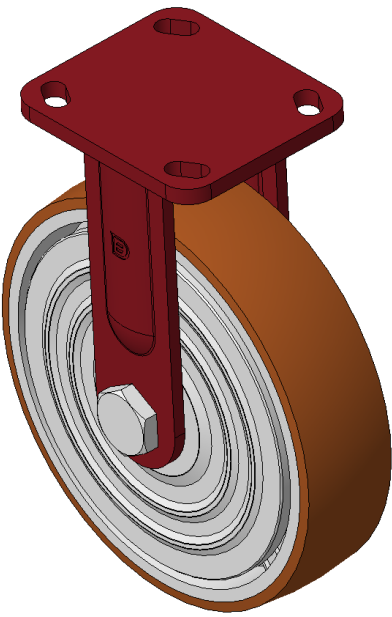
EAN

KS-11570800531131

Rigid Caster, Welded Caster Fork Red painted surface, Top Plate Mounting Type, Hole spacing 85x70 Cast Iron Wheel Center, high quality polyurethane Wheel Tread, Cast Iron brown Bearing - Ball Bearing

Wheel tread: Made of high quality polyurethane  
Wheel Center: iron core/cast iron core

Drawings are for reference only and may differ from the product



Picture may differ from original product

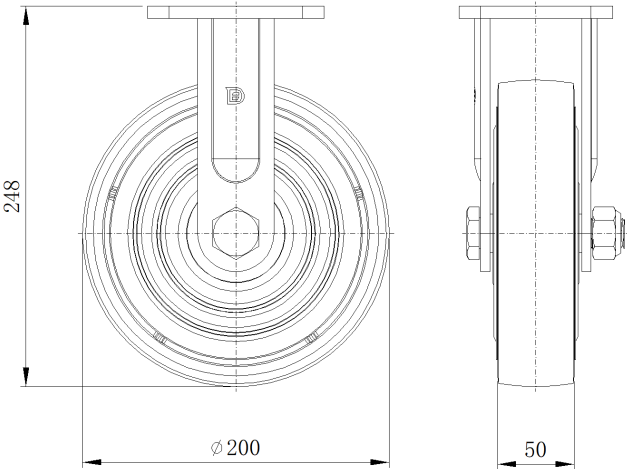
Technical Data

|                                                                        |                           |
|------------------------------------------------------------------------|---------------------------|
| <input checked="" type="radio"/> Imperial <input type="radio"/> Metric |                           |
| Wheel Diameter                                                         | 6 "                       |
| Wheel Width                                                            | 2 "                       |
| Wheel Bearing                                                          | Wheels With Ball Bearings |
| Plate Size                                                             | 4-9/16 " x 4 "            |
| Bolt Hole Spacing                                                      | 3-3/8 " x 2-3/4 "         |
| Plate Hole                                                             | 13/16 " x 3/8 "           |
| Overall Height                                                         | 9-15/16 "                 |
| Hardness Of Tread                                                      | 92±5° Shore A             |
| Load Capacity (Dynamic)                                                | 1477lbs                   |
| Load Capacity (Static)                                                 | 2216lbs                   |
| Temperature                                                            | -4°F to +158°F            |
| Fork Type                                                              | Rigid Caster              |
| Stainless                                                              | N/A                       |
| Electrical Conductivity                                                | N/A                       |
| Anti-Static                                                            | N/A                       |
| Weight                                                                 | 10.5lbs                   |
| Standard                                                               | ISO22883                  |

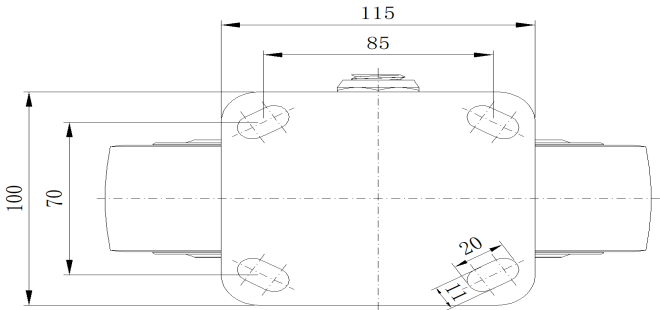
Advantages at a glance

|                            |           |
|----------------------------|-----------|
| Rolling Resistance         | ● ● ● ● ● |
| Operating Noise            | ● ● ● ● ● |
| Floor Surface Preservation | ● ● ● ● ● |

Dimensions



Mounting



\* For any deviation between metric and imperial spec, please refer to the metric spec.