



1157 57 Series Caster Series

QPU (brown round) Wheel Diameter x Wheel Width 200 x 50mm

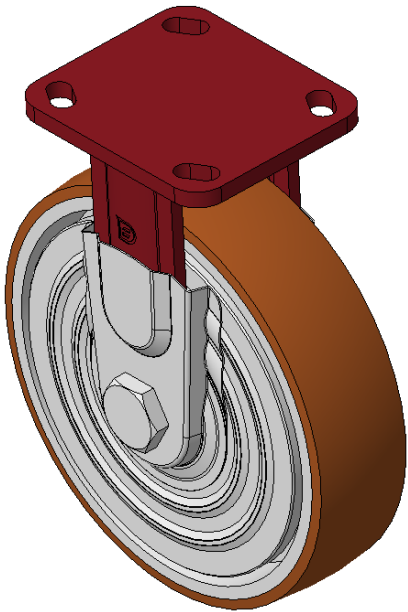
EAN

KS-11570800531191

Rigid Caster with Welded Caster Fork  
Red painted finish, Mounting Type - Top Plate, 85x70 Bolt Hole Spacing  
Cast Iron core with High Quality Polyurethane Wheel Tread, Cast Iron brown  
Bearings—Ball Bearings with special Anti-thread wheel cover

Wheel tread: high-quality polyurethane wheel tread  
Wheel Center: iron core/cast iron core

Drawings are for reference only and may differ from the product



Picture may differ from original product

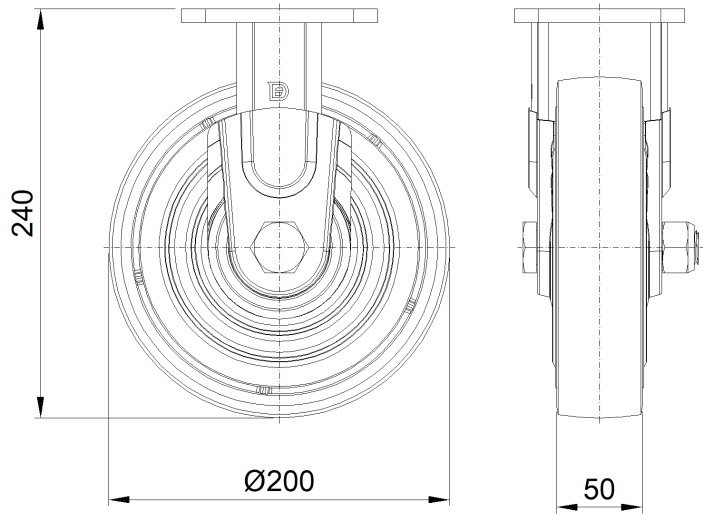
Technical Data

<input checked="" type="radio"/> Metric <input type="radio"/> Imperial	
Wheel Diameter	200mm
Wheel Width	50mm
Wheel Bearing	Wheels With Ball Bearings
Plate Size	100 x 115mm
Bolt Hole Spacing	85 x 70mm
Plate Hole	20 x 11mm
Overall Height	240mm
Hardness Of Tread	92±5° Shore A
Load Capacity (Dynamic)	670kgs
Load Capacity (Static)	1005kgs
Temperature	-20°C to +70°C
Fork Type	Rigid Caster
Stainless	N/A
Electrical Conductivity	N/A
Anti-Static	N/A
Weight	4.77kgs
Standard	ISO22883

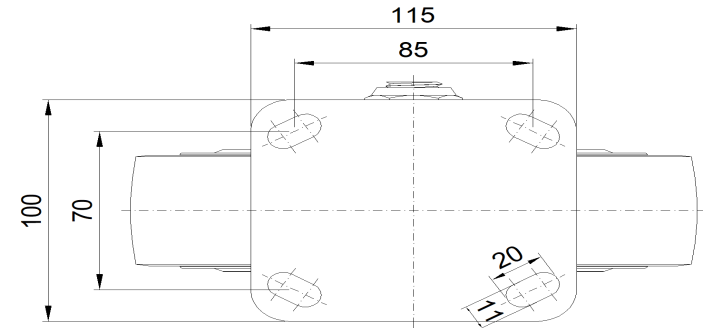
Advantages at a glance

Rolling Resistance	● ● ● ● ●
Operating Noise	● ● ● ● ●
Floor Surface Preservation	● ● ● ● ●

Dimensions



Mounting



\* For any deviation between metric and imperial spec, please refer to the metric spec.