



1157 57 Series Caster Series

ZQPU (brown round) Wheel Diameter x Wheel Width 200 x 24 (51) mm

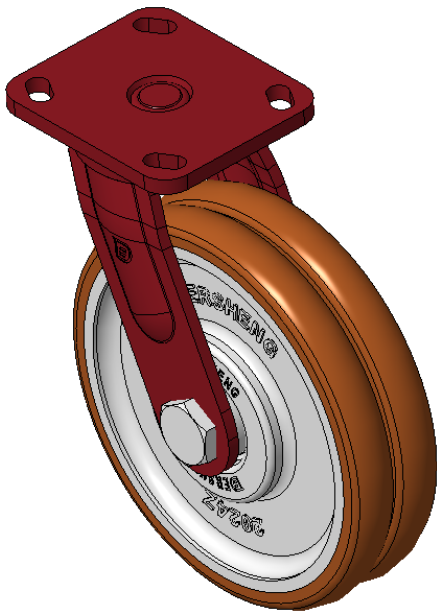
EAN

KS-11570800802041

Swivel Casters, Welded Caster Fork Surface sprayed with red paint, Mounting Type - Top Plate, Hole spacing 85x70 Cast Iron Wheel Center, High Quality Polyurethane Wheel Tread, Cast Iron brown Bearing—special Ball Bearings to reduce Rolling Resistance ZQPU double wheels, Ergonomic design, easier to start and turn

Wheel tread: High quality polyurethane wheel tread
Wheel Center: iron core/cast iron core

Drawings are for reference only and may differ from the product



Picture may differ from original product

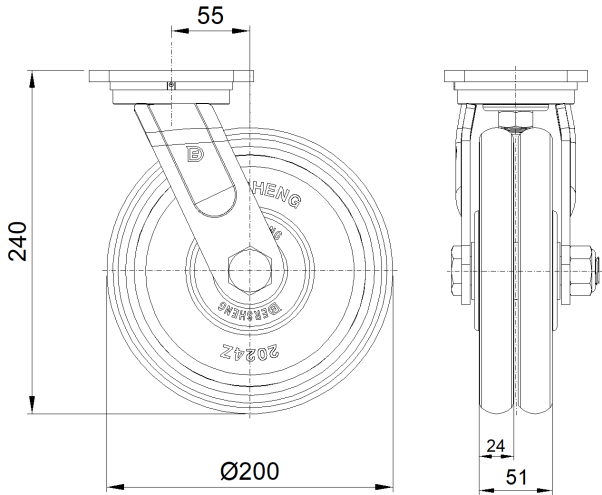
Technical Data

<input checked="" type="radio"/> Imperial <input type="radio"/> Metric	
Wheel Diameter	8 "
Wheel Width	2
Wheel Bearing	Wheels With Ball Bearings
Plate Size	4 " x 4-9/16 "
Bolt Hole Spacing	3-3/8 " x 2-3/4 "
Plate Hole	13/16 " x 3/8 "
Offset	2-3/16 "
Swivel Interference	12-1/2 "
Overall Height	9-1/2 "
Swivel Radius	6-5/16 "
Hardness Of Tread	92±5° Shore A
Load Capacity (Dynamic)	1433lbs
Load Capacity (Static)	2150lbs
Temperature	-4°F to +158°F
Fork Type	Swivel Caster
Stainless	N/A
Electrical Conductivity	N/A
Anti-Static	N/A
Weight	14.6lbs
Standard	ISO22883

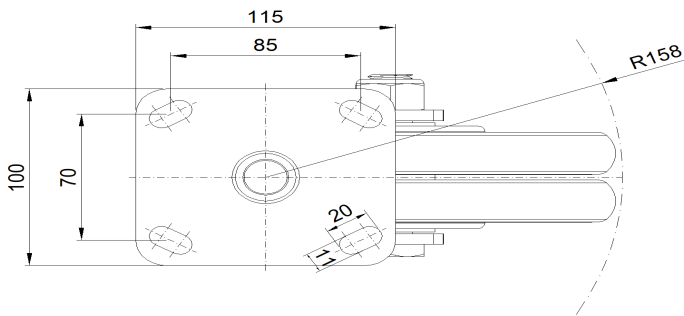
Advantages at a glance

Rolling Resistance	● ● ● ● ●
Operating Noise	● ● ● ● ●
Floor Surface Preservation	● ● ● ● ●

Dimensions



Mounting



* For any deviation between metric and imperial spec, please refer to the metric spec.