

1160 UNI Series-Light Duty Caster Series (All Plastic)



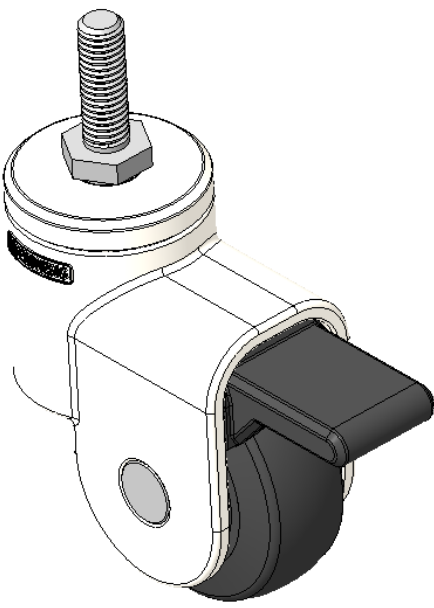
PPR (black and black) Wheel Diameter x Wheel Width 51.5 x 20mm

EAN
KS-11600200266073

Single brake With locking system Casters, Threaded Stem M8x25
White legs made of polyamide reinforcement, Threaded Stem installation
Rust-proof, Corrosion resistant, Attractive appearance, Economical, and allows for smooth rotation
High-Quality Impact-Resistant Polypropylene Wheel Center, High-Quality Reinforced Polypropylene Rubber (TPR) Wheel Tread
Black, Bearing—Plain Bearing

Wheel tread: Thermoplastic rubber elastomer (TPR)
Wheel Center: Made of high-quality impact-resistant polypropylene

Drawings are for reference only and may differ from the product



Picture may differ from original product

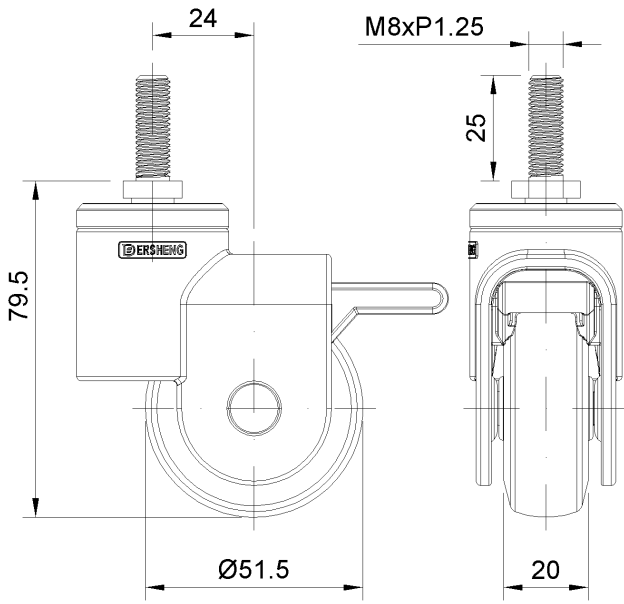
Technical Data

| | |
|--|--------------------------------|
| <input checked="" type="radio"/> Metric <input type="radio"/> Imperial | |
| Wheel Diameter | 51.5mm |
| Wheel Width | 20mm |
| Wheel Bearing | Wheel With Plain Bearing |
| Threaded Stem | M8 |
| Threaded Length | 25mm |
| Offset | 24mm |
| Swivel Interference | 142mm |
| Overall Height | 79.5mm |
| Swivel Radius | 71mm |
| Hardness Of Tread | 82±5° Shore A |
| Load Capacity (Dynamic) | 30kgs |
| Load Capacity (Static) | 45kgs |
| Temperature | -20°C to +60°C |
| Fork Type | Swivel Caster With Wheel Brake |
| Stainless | N/A |
| Electrical Conductivity | N/A |
| Anti-Static | N/A |
| Weight | 0.12kgs |
| Standard | ISO22883 |

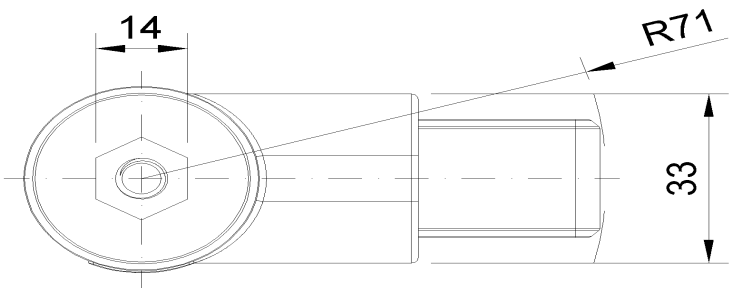
Advantages at a glance

| | |
|----------------------------|-----------|
| Rolling Resistance | ● ● ● ● ○ |
| Operating Noise | ● ● ● ● ○ |
| Floor Surface Preservation | ● ● ● ● ● |

Dimensions



Mounting



* For any deviation between metric and imperial spec, please refer to the metric spec.