

1160 UNI Series-Light Duty Caster Series (All Plastic)



PPR (black and black) Wheel Diameter x Wheel Width 51.5 x 20mm

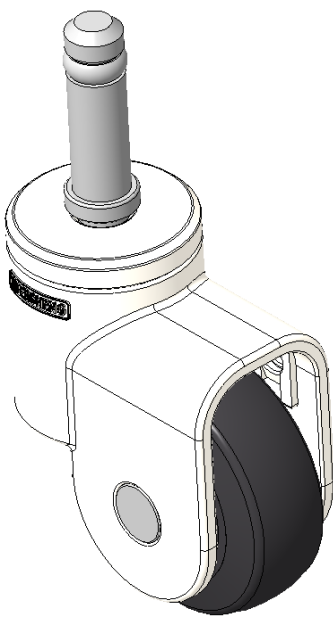
EAN

KS-11600200267033

Swivel Casters, mortise-and-tenon Stamping Fork—Ø11x38L
White legs are made of polyamide reinforced material.
Rust-proof, Corrosion resistant, Attractive appearance, Economical, and allows for Smooth rotation.
High-Quality Impact-Resistant Polypropylene Wheel Center, High-Quality Reinforced Polypropylene Rubber (TPR) Wheel Tread.
Black, wheels—Plain Bearing.

Wheel tread: Thermoplastic rubber elastomer (TPR)
Wheel Center: Made of high-quality impact-resistant polypropylene

Drawings are for reference only and may differ from the product



Picture may differ from original product

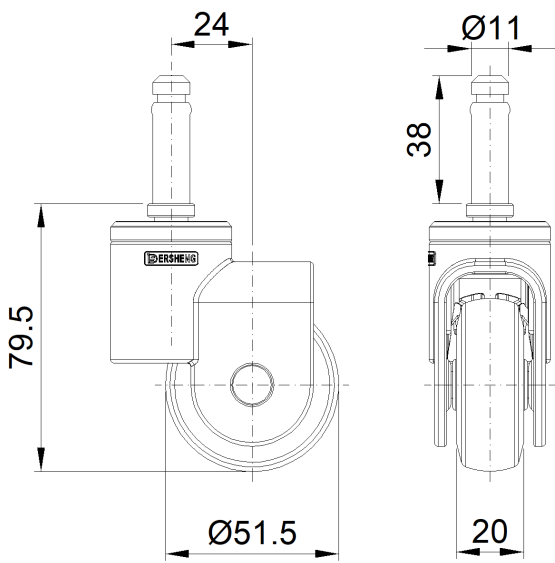
Technical Data

<input checked="" type="radio"/> Metric <input type="radio"/> Imperial	
Wheel Diameter	51.5mm
Wheel Width	20mm
Wheel Bearing	Wheel With Plain Bearing
Stem Diameter	11mm
Stem Length	38mm
Offset	24mm
Swivel Interference	100mm
Overall Height	79.5mm
Swivel Radius	50mm
Hardness Of Tread	82±5° Shore A
Load Capacity (Dynamic)	30kgs
Load Capacity (Static)	45kgs
Temperature	-20°C to +60°C
Fork Type	Swivel Caster
Stainless	N/A
Electrical Conductivity	N/A
Anti-Static	N/A
Weight	0.13kgs
Standard	ISO22881

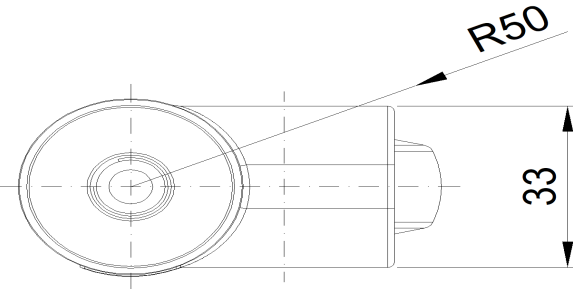
Advantages at a glance

Rolling Resistance	● ● ● ● ○
Operating Noise	● ● ● ● ○
Floor Surface Preservation	● ● ● ● ●

Dimensions



Mounting



* For any deviation between metric and imperial spec, please refer to the metric spec.