

1160 UNI Series-Light Duty Caster Series (All Plastic)



PPR (black and black) Wheel Diameter x Wheel Width 80 x 24mm

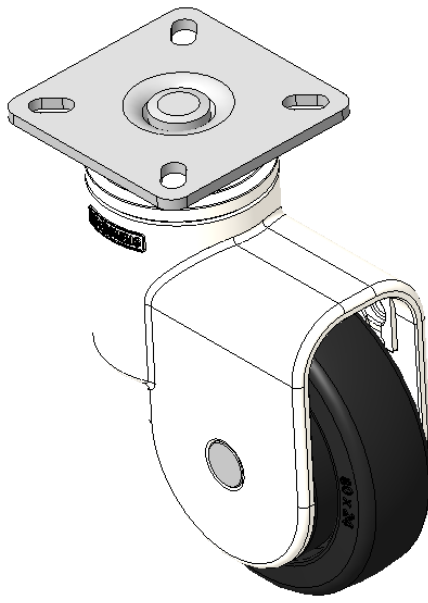
EAN

KS-11602300262033

Adjustable Casters, 42.5x42.5mm angled hole Top Plate  
White legs made of polyamide reinforced material  
Rust-proof, Corrosion resistant, Smooth rotation, suitable for low and medium-sized trolleys  
High-Quality Impact-Resistant Polypropylene Wheel Center, High-Quality Reinforced Polypropylene Rubber (TPR) Wheel Tread  
Black, Bearing - Ball Bearings

Wheel tread: Thermoplastic rubber elastomer (TPR)  
Wheel Center: Made of high-quality impact-resistant polypropylene

Drawings are for reference only and may differ from the product



Picture may differ from original product

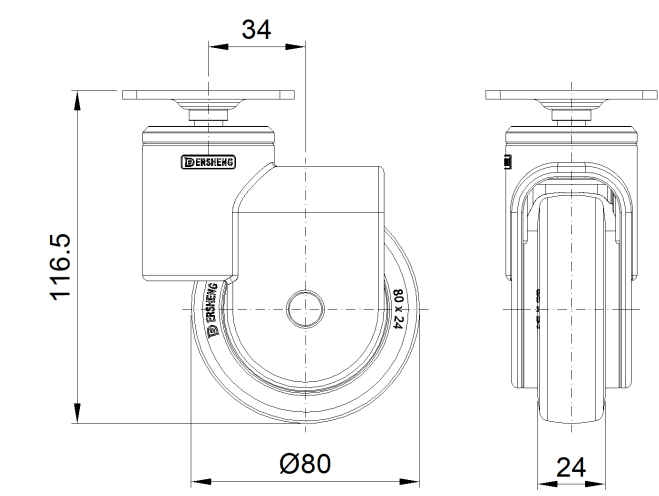
Technical Data

<input checked="" type="radio"/> Imperial <input type="radio"/> Metric	
Wheel Diameter	3-3/16 "
Wheel Width	1 "
Wheel Bearing	Wheel With Plain Bearing
Plate Size	2-7/16 " x 2-7/16 "
Bolt Hole Spacing	1-11/16"x1-11/16"
Plate Hole	3/8 " x 1/4 "
Offset	1-3/8 "
Swivel Interference	6 "
Overall Height	4-3/8 "
Swivel Radius	3 "
Hardness Of Tread	82±5° Shore A
Load Capacity (Dynamic)	88lbs
Load Capacity (Static)	132lbs
Temperature	-4°F to +140°F
Fork Type	Swivel Caster
Stainless	N/A
Electrical Conductivity	N/A
Anti-Static	N/A
Weight	0.8lbs
Standard	ISO22881

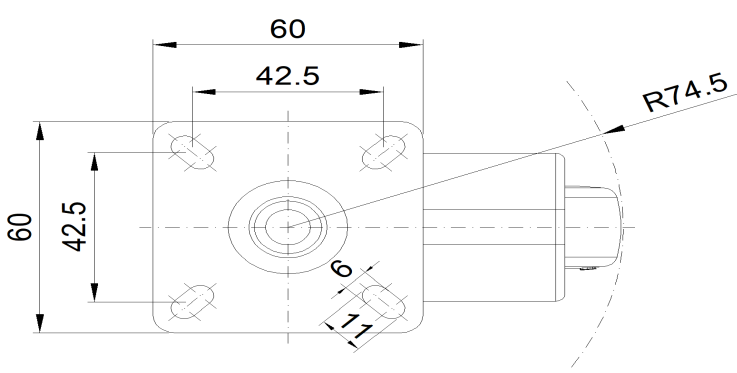
Advantages at a glance

Rolling Resistance	● ● ● ● ○
Operating Noise	● ● ● ● ○
Floor Surface Preservation	● ● ● ● ●

Dimensions



Mounting



\* For any deviation between metric and imperial spec, please refer to the metric spec.