

1160 UNI Series-Light Duty Caster Series (All Plastic)



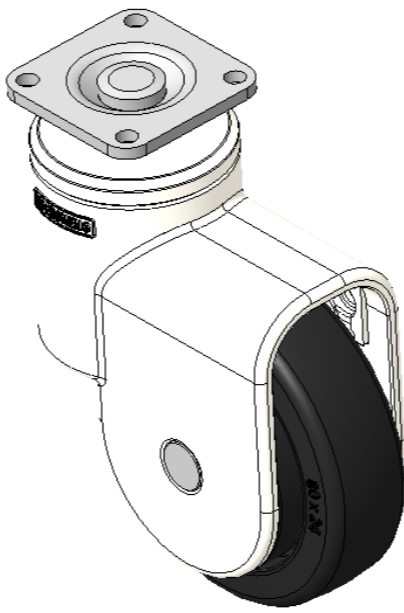
PPR (black and black) Wheel Diameter x Wheel Width 80 x 24mm

EAN
KS-11602300262043

Adjustable Casters, 32x32 angled hole Top Plate
White legs made of polyamide reinforced material
Rust-proof, Corrosion resistant, Smooth rotation, suitable for low and medium-sized trolleys
High-Quality Impact-Resistant Polypropylene Wheel Center, High-Quality Reinforced Polypropylene Rubber (TPR) Wheel Tread
Black, Bearing - Ball Bearings

Wheel tread: Thermoplastic rubber elastomer (TPR)
Wheel Center: Made of high-quality impact-resistant polypropylene

Drawings are for reference only and may differ from the product



Picture may differ from original product

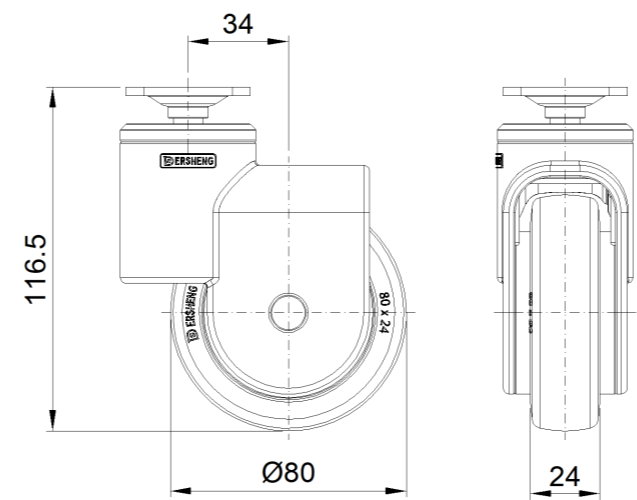
Technical Data

<input checked="" type="radio"/> Metric <input type="radio"/> Imperial	
Wheel Diameter	80mm
Wheel Width	24mm
Wheel Bearing	Wheel With Plain Bearing
Plate Size	42 x 42mm
Bolt Hole Spacing	32x32mm
Plate Hole	5mm
Offset	34mm
Swivel Interference	149mm
Overall Height	116.5mm
Swivel Radius	74.5mm
Hardness Of Tread	82±5° Shore A
Load Capacity (Dynamic)	40kgs
Load Capacity (Static)	60kgs
Temperature	-20°C to +60°C
Fork Type	Swivel Caster
Stainless	N/A
Electrical Conductivity	N/A
Anti-Static	N/A
Weight	0.27kgs
Standard	ISO22881

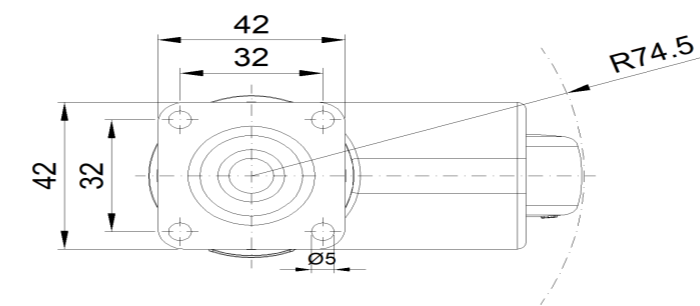
Advantages at a glance

Rolling Resistance	● ● ● ● ○
Operating Noise	● ● ● ● ○
Floor Surface Preservation	● ● ● ● ●

Dimensions



Mounting



* For any deviation between metric and imperial spec, please refer to the metric spec.