

1160 UNI Series-Light Duty Caster Series (All Plastic)



PPR (black and black) Wheel Diameter x Wheel Width 80 x 24mm

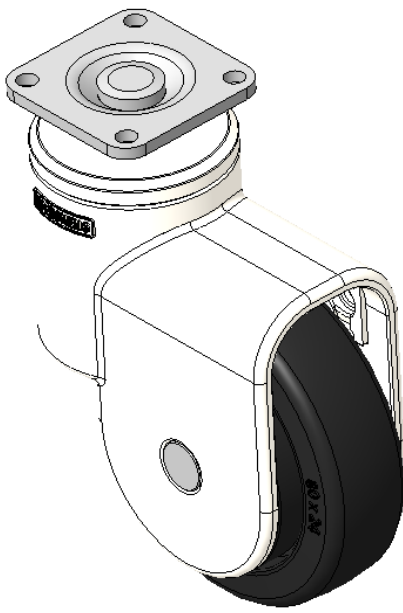
EAN

KS-11602300262043

Adjustable Casters, 32x32 angled hole Top Plate
White legs made of polyamide reinforced material
Rust-proof, Corrosion resistant, Smooth rotation, suitable for low and medium-sized trolleys
High-Quality Impact-Resistant Polypropylene Wheel Center, High-Quality Reinforced Polypropylene Rubber (TPR) Wheel Tread
Black, Bearing - Ball Bearings

Wheel tread: Thermoplastic rubber elastomer (TPR)
Wheel Center: Made of high-quality impact-resistant polypropylene

Drawings are for reference only and may differ from the product



Picture may differ from original product

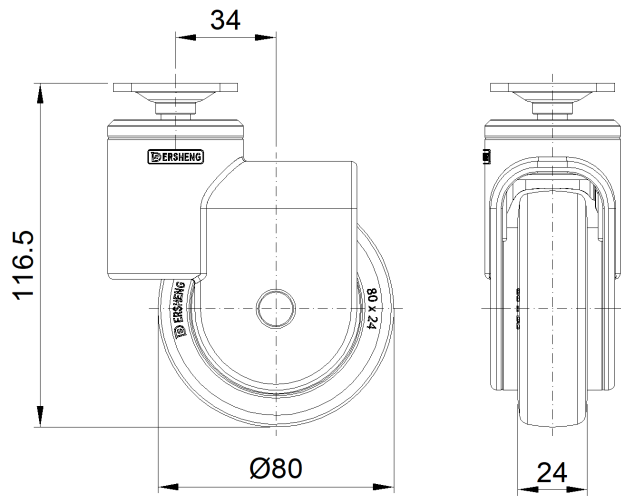
Technical Data

| | |
|--|--------------------------|
| <input checked="" type="radio"/> Imperial <input type="radio"/> Metric | |
| Wheel Diameter | 3-3/16 " |
| Wheel Width | 1 " |
| Wheel Bearing | Wheel With Plain Bearing |
| Plate Size | 1-11/16 " x 1-11/16 " |
| Bolt Hole Spacing | 1-1/4"x1-1/4" |
| Plate Hole | 1/4 " |
| Offset | 1-3/8 " |
| Swivel Interference | 6 " |
| Overall Height | 4-5/8 " |
| Swivel Radius | 3 " |
| Hardness Of Tread | 82±5° Shore A |
| Load Capacity (Dynamic) | 88lbs |
| Load Capacity (Static) | 132lbs |
| Temperature | -4°F to +140°F |
| Fork Type | Swivel Caster |
| Stainless | N/A |
| Electrical Conductivity | N/A |
| Anti-Static | N/A |
| Weight | 0.6lbs |
| Standard | ISO22881 |

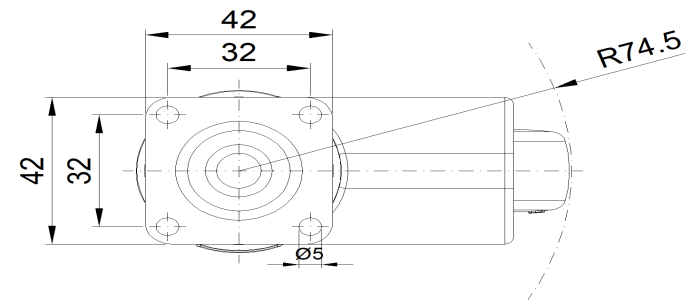
Advantages at a glance

| | |
|----------------------------|-----------|
| Rolling Resistance | ● ● ● ● ○ |
| Operating Noise | ● ● ● ● ○ |
| Floor Surface Preservation | ● ● ● ● ● |

Dimensions



Mounting



* For any deviation between metric and imperial spec, please refer to the metric spec.