

1160 UNI Series-Light Duty Caster Series (All Plastic)



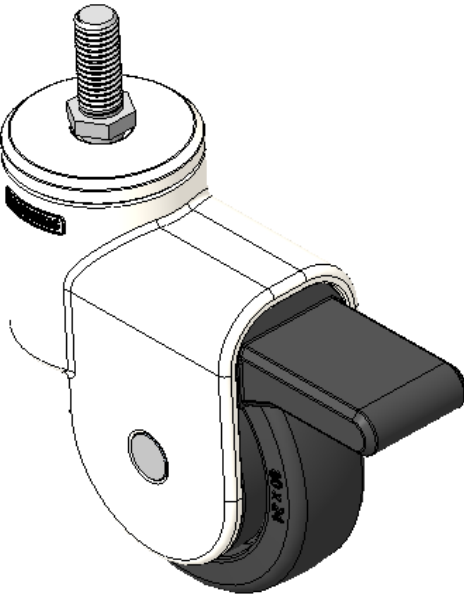
PPR (black and black) Wheel Diameter x Wheel Width 80 x 24mm

EAN  
KS-11602300266063

Single-brake With locking system Casters, Threaded Stem M10x25  
White legs made of polyamide reinforcement, Threaded Stem installation  
Rust-proof, Corrosion resistant, Attractive appearance, Economical, and allows for smooth rotation  
High-Quality Impact-Resistant Polypropylene Wheel Center, High-Quality Reinforced Polypropylene Rubber (TPR) Wheel Tread  
Black, Bearing—Plain Bearing

Wheel tread: Thermoplastic rubber elastomer (TPR)  
Wheel Center: Made of high-quality impact-resistant polypropylene

Drawings are for reference only and may differ from the product



Picture may differ from original product

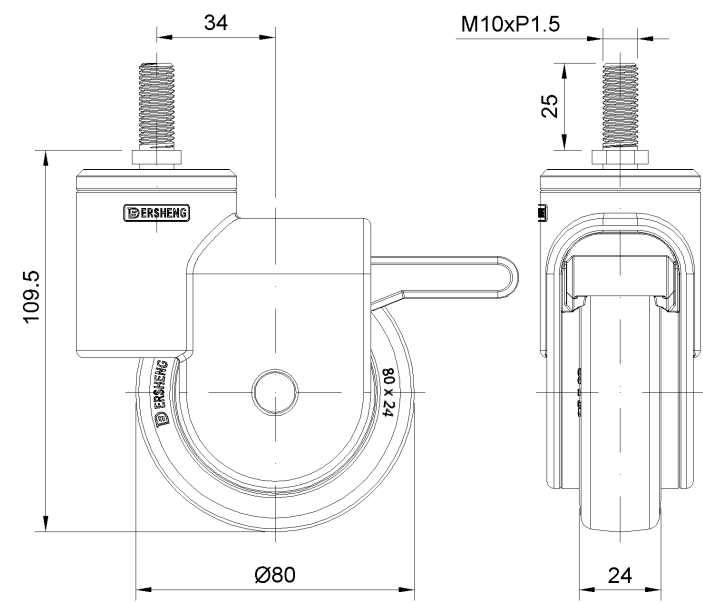
Technical Data

<input checked="" type="radio"/> Imperial <input type="radio"/> Metric	
Wheel Diameter	3-3/16 "
Wheel Width	1 "
Wheel Bearing	Wheel With Plain Bearing
Threaded Stem	M10
Threaded Length	1 "
Offset	1-3/8 "
Swivel Interference	8-3/8 "
Overall Height	4-3/8 "
Swivel Radius	4-3/16 "
Hardness Of Tread	82±5° Shore A
Load Capacity (Dynamic)	88lbs
Load Capacity (Static)	132lbs
Temperature	-4°F to +140°F
Fork Type	Swivel Caster With Wheel Brake
Stainless	N/A
Electrical Conductivity	N/A
Anti-Static	N/A
Weight	0.6lbs
Standard	ISO22883

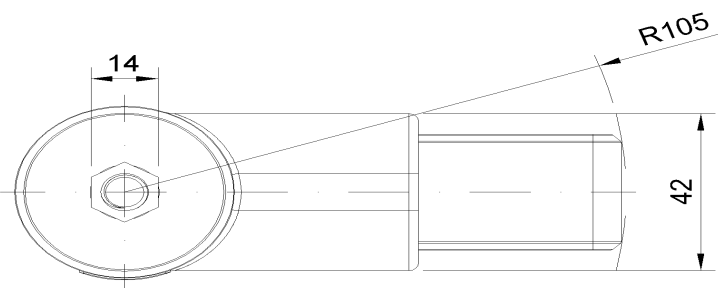
Advantages at a glance

Rolling Resistance	● ● ● ● ○
Operating Noise	● ● ● ● ○
Floor Surface Preservation	● ● ● ● ●

Dimensions



Mounting



\* For any deviation between metric and imperial spec, please refer to the metric spec.