

1160 UNI Series-Light Duty Caster Series (All Plastic)



PPR (black and black) Wheel Diameter x Wheel Width 80 x 24mm

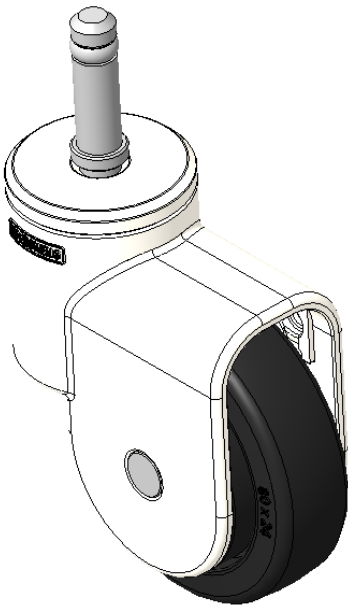
EAN

KS-11602300267033

Swivel Casters, mortise-and-tenon Stamping Fork—Ø11x38L
White legs are made of polyamide reinforced material.
Rust-proof, Corrosion resistant, Attractive appearance, Economical, and allows for Smooth rotation.
High-Quality Impact-Resistant Polypropylene Wheel Center, High-Quality Reinforced Polypropylene Rubber (TPR) Wheel Tread.
Black, wheels—Plain Bearing.

Wheel tread: Thermoplastic rubber elastomer (TPR)
Wheel Center: Made of high-quality impact-resistant polypropylene

Drawings are for reference only and may differ from the product



Picture may differ from original product

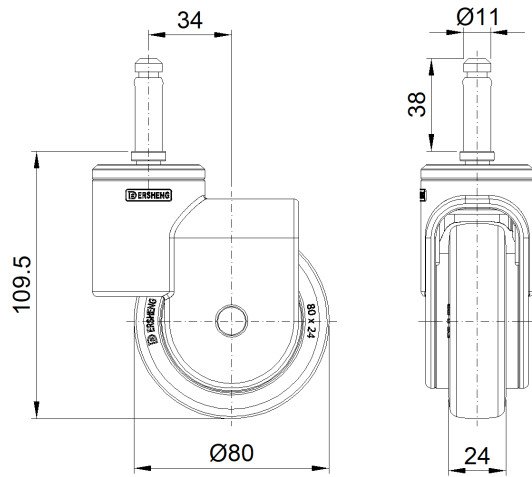
Technical Data

<input checked="" type="radio"/> Imperial <input type="radio"/> Metric	
Wheel Diameter	3-3/16 "
Wheel Width	1 "
Wheel Bearing	Wheel With Plain Bearing
Stem Diameter	3/8 "
Stem Length	1-1/2 "
Offset	1-3/8 "
Swivel Interference	6 "
Overall Height	4-3/8 "
Swivel Radius	3 "
Hardness Of Tread	82±5° Shore A
Load Capacity (Dynamic)	88lbs
Load Capacity (Static)	132lbs
Temperature	-4°F to +140°F
Fork Type	Swivel Caster
Stainless	N/A
Electrical Conductivity	N/A
Anti-Static	N/A
Weight	0.6lbs
Standard	ISO22881

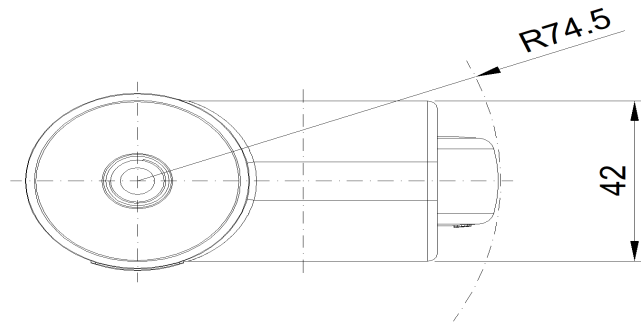
Advantages at a glance

Rolling Resistance	● ● ● ● ○
Operating Noise	● ● ● ● ○
Floor Surface Preservation	● ● ● ● ●

Dimensions



Mounting



* For any deviation between metric and imperial spec, please refer to the metric spec.