



1161 Automatic Cable Locking Caster Series

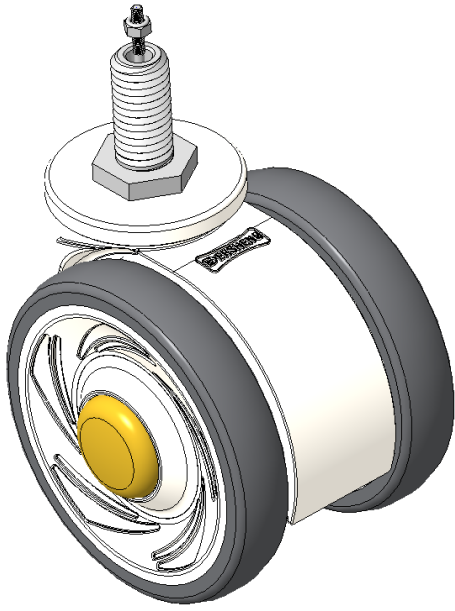
E-conductive wheel (white light gray) Wheel Diameter x Wheel Width 75 x 14mm

EAN
KS-11610300175013

Actual Casters, Threaded Stem M12x25
White Casters with polyamide reinforcement, Threaded Stem installation
Rust-proof, Corrosion resistant, Attractive appearance, Smooth rotation, and electrically conductive
High-Quality Impact-Resistant Polypropylene Wheel Center, High-Quality Reinforced Polypropylene Rubber (TPR) Wheel Tread
White/dark gray, Bearing—Ball Bearings

Wheel tread: Thermoplastic rubber elastomer (TPR)
Wheel Center: Made of high-quality impact-resistant polypropylene

Drawings are for reference only and may differ from the product



Picture may differ from original product

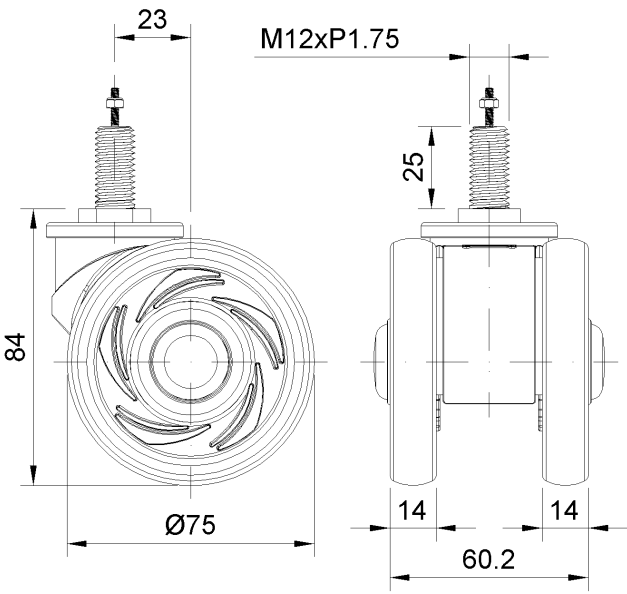
Technical Data

| | |
|--|---------------------------|
| <input checked="" type="radio"/> Imperial <input type="radio"/> Metric | |
| Wheel Diameter | 3 " |
| Wheel Width | 2-7/16 " |
| Wheel Bearing | Wheels With Ball Bearings |
| Threaded Stem | M12 |
| Threaded Length | 1 " |
| Offset | 15/16 " |
| Swivel Interference | 5-3/8 " |
| Overall Height | 3-3/8 " |
| Swivel Radius | 2-11/16 " |
| Hardness Of Tread | 72±5° Shore A |
| Load Capacity (Dynamic) | 198lbs |
| Load Capacity (Static) | 298lbs |
| Temperature | -4°F to +140°F |
| Fork Type | Swivel Caster |
| Stainless | N/A |
| Electrical Conductivity | Y 10^3/~10^4/Ω |
| Anti-Static | N/A |
| Weight | 0.7lbs |
| Standard | ISO22881 |

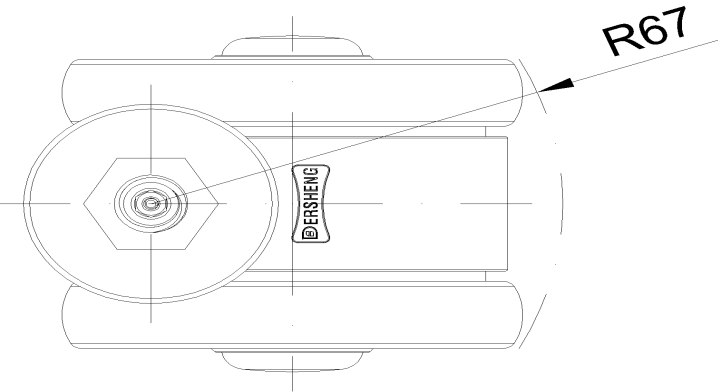
Advantages at a glance

| | |
|----------------------------|-----------|
| Rolling Resistance | ● ● ● ● ● |
| Operating Noise | ● ● ● ● ● |
| Floor Surface Preservation | ● ● ● ● ● |

Dimensions



Mounting



* For any deviation between metric and imperial spec, please refer to the metric spec.