

Product Information Sheet



1161 Automatic Cable Locking Caster Series

E-conductive wheel (white light gray) Wheel Diameter x Wheel Width 100 x 18mm

EAN

KS-11610400172023

Actual Casters, 75x45 angled perforated Top Plate
White legs reinforced with polyamide, Mounting Type - Top Plate
Rust-proof, Corrosion resistant, Attractive appearance, Smooth rotation, and conductive
High-Quality Impact-Resistant Polypropylene Wheel Center, High-Quality Reinforced
Polypropylene Rubber (TPR) Wheel Tread
White and dark gray, Bearing—Ball Bearings

Wheel tread: Thermoplastic rubber elastomer (TPR)

Wheel Center: Made of high-quality impact-resistant polypropylene

Drawings are for reference only and may differ from the product



Picture may differ from original product

Technical Data

☒ Imperial ☐ Metric

Wheel Diameter 4"

Wheel Width 3-3/8"

Wheel Bearing Wheels With Ball Bearings

Plate Size 3-7/8" x 2-3/4"

Bolt Hole Spacing 3 " x 1-13/16 "

Plate Hole 3/8" x 3/8"

Offset 1-5/16"

Swivel Interference 7-1/4"

Overall Height 4-15/16 "

Swivel Radius 3-5/8"

Hardness Of Tread 72±5° Shore A

Load Capacity (Dynamic)	220lbs
-------------------------	--------

Load Capacity (Static)	331lbs
------------------------	--------

Temperature -4°F to +140°F

Fork Type Swivel Caster

Stainless	N/A
-----------	-----

Electrical Conductivity $\sim 10^3 \sim 10^4 / \Omega$

Anti-Static	N/A
-------------	-----

Weight 1.8lbs

Standard ISO22881

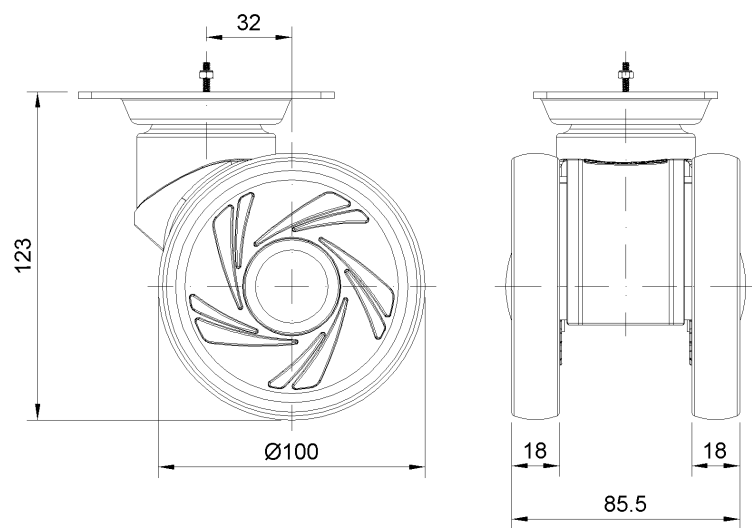
Advantages at a glance

Rolling Resistance ● ● ● ● ●

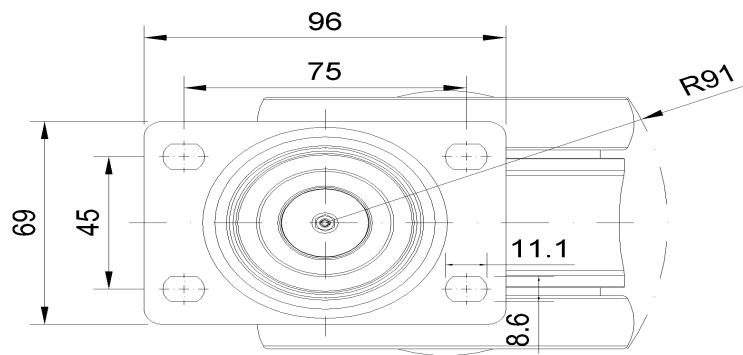
Operating Noise ● ● ● ● ●

Floor Surface Preservation ● ● ● ● ●

Dimensions



Mounting



* For any deviation between metric and imperial spec, please refer to the metric spec.