



1161 Automatic Cable Locking Caster Series

E-conductive wheel (white dark gray) Wheel Diameter x Wheel Width 120 x 18mm

EAN

KS-11610500454023

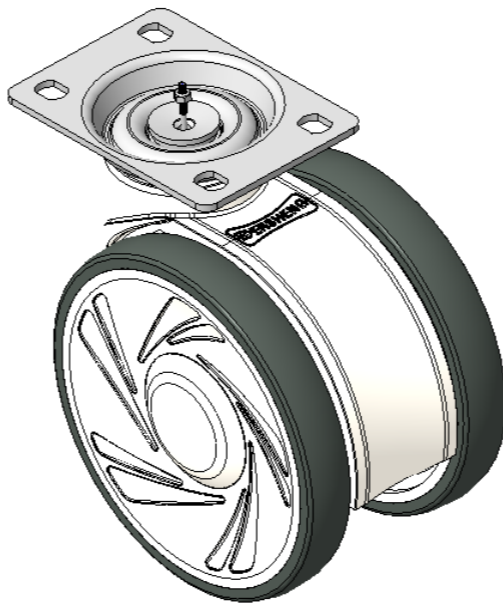
Casters equipped with a double-With locking system, 75x45 angled perforated Top Plate

White legs made of polyamide reinforced material

Rust-proof, Corrosion resistant, Attractive appearance, Economical, and allows for smooth rotation

High-Quality Impact-Resistant Polypropylene Wheel Center, High-Quality Reinforced Polypropylene Rubber (TPR) Wheel Tread

Gray, Bearing — Ball Bearings



Wheel tread: Thermoplastic rubber elastomer (TPR)

Wheel Center: Made of high-quality impact-resistant polypropylene

Drawings are for reference only and may differ from the product

Picture may differ from original product

Technical Data

☒ Imperial ☐ Metric

Wheel Diameter 5"

Wheel Width 3-3/8"

Wheel Bearing Wheels With Ball Bearings

Plate Size 3-7/8 " x 2-3/4 "

Bolt Hole Spacing 3 " x 1-13/16 "

Plate Hole 3/8" x 3/8"

Offset 1-5/8 "

Swivel Interference 8-3/4"

Overall Height 5-7/8 "

Swivel Radius 4-3/8 "

Hardness Of Tread	72±5° Shore A
-------------------	---------------

Load Capacity (Dynamic)	243lbs
-------------------------	--------

Load Capacity (Static)	364lbs
------------------------	--------

Temperature -4°F to +140°F

Fork Type Swivel Caster With Total Brake

Stainless	N/A
-----------	-----

Electrical Conductivity	N/A
-------------------------	-----

Anti-Static	N/A
-------------	-----

Weight 2.1lbs

Standard ISO22881

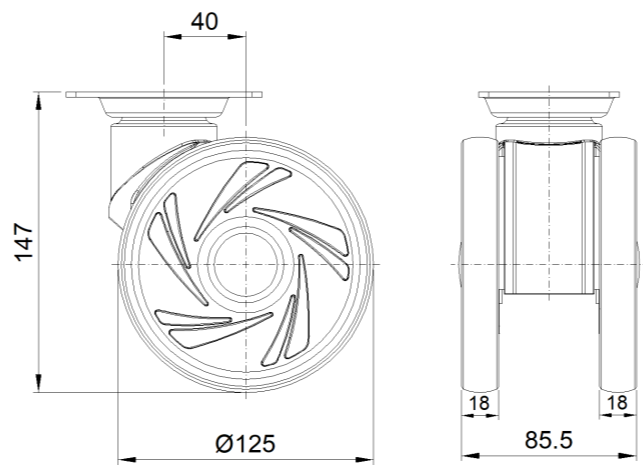
Advantages at a glance

Rolling Resistance ● ● ● ● ●

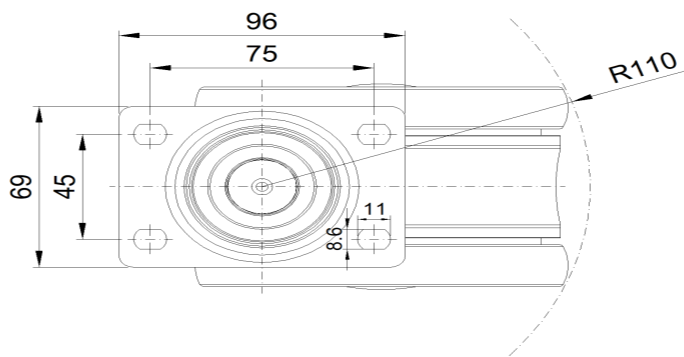
Operating Noise ● ● ● ● ●

Floor Surface Preservation ● ● ● ● ●

Dimensions



Mounting



* For any deviation between metric and imperial spec, please refer to the metric spec.