

1162D Super Heavy Duty Casters Series (Double Wheel)



MC Nylon Wheel (Off-White) Wheel Diameter × Wheel Width 150 × 50mm

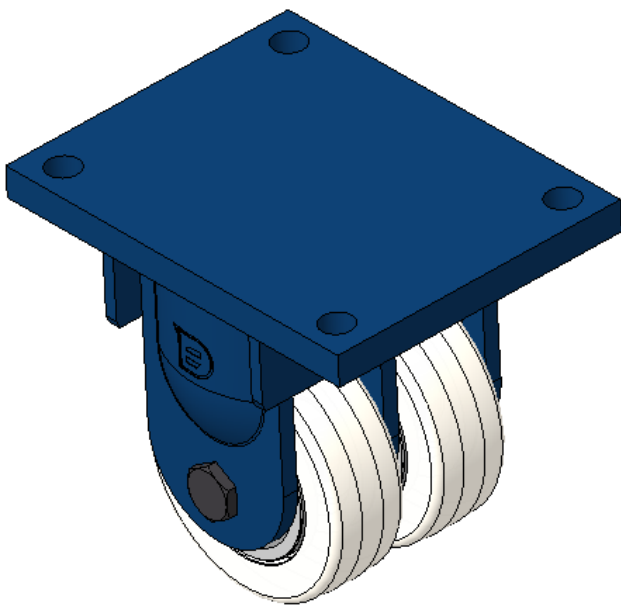
EAN

KS-11620600071311

Rigid Casters, Welded Caster Fork, blue paint finish. Base plate Mounting Type device, 210x160mm Bolt Hole Spacing. Reinforced Polypropylene Wheel Center and Wheel Tread, off-white. Bearing—skew ball bearing.

Wheel surface: thermoplastic
Wheel Center: thermoplastic

Drawings are for reference only and may differ from the product



Picture may differ from original product

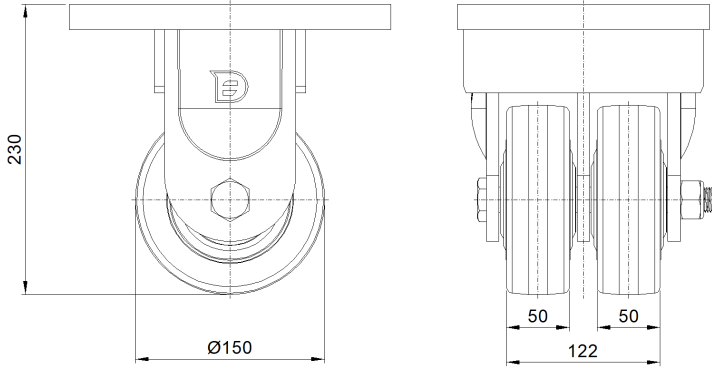
Technical Data

<input checked="" type="radio"/> Imperial <input type="radio"/> Metric	
Wheel Diameter	6 "
Wheel Width	4-7/8 "
Wheel Bearing	Wheels With Ball Bearings
Plate Size	10-1/16 " x 8 "
Bolt Hole Spacing	8-17/64 " x 6-19/64 "
Plate Hole	7/8 "
Overall Height	9-1/8 "
Hardness Of Tread	82±5° Shore D
Load Capacity (Dynamic)	6614lbs
Load Capacity (Static)	9921lbs
Temperature	-13°F to +176°F
Fork Type	Rigid Caster
Stainless	N/A
Electrical Conductivity	N/A
Anti-Static	N/A
Weight	34.5lbs
Standard	ISO22883

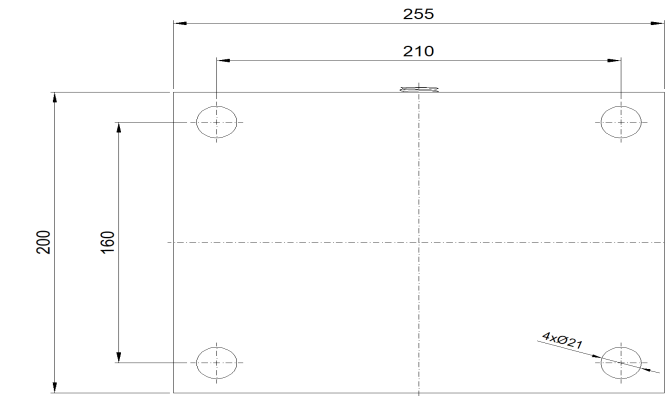
Advantages at a glance

Rolling Resistance	● ● ● ● ●
Operating Noise	● ● ○ ○ ○
Floor Surface Preservation	● ● ○ ○ ○

Dimensions



Mounting



* For any deviation between metric and imperial spec, please refer to the metric spec.