

1162 Super Heavy Duty Casters Series (Single Wheel)



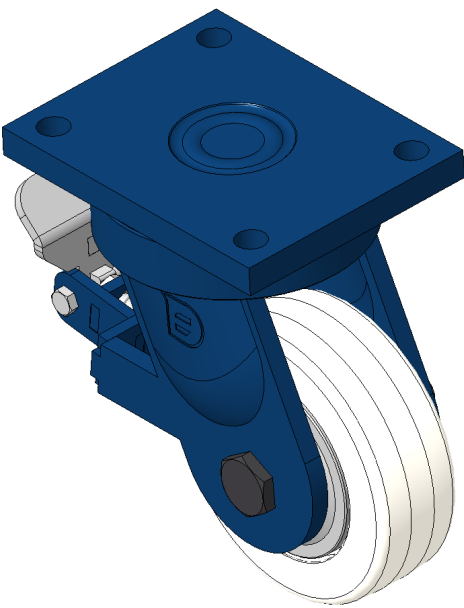
MC Nylon Wheel (Off-White) Wheel Diameter × Wheel Width 150 × 50mm

EAN
KS-11620600074011

Activated brake Casters, Welded Caster Fork, blue paint finish
Base plate Mounting Type device, 140x105mm Bolt Hole Spacing
Reinforced Polypropylene Wheel Center and Wheel Tread, off-white
Bearings—Ball Bearings

Wheel surface: thermoplastic
Wheel Center: thermoplastic

Drawings are for reference only and may differ from the product



Picture may differ from original product

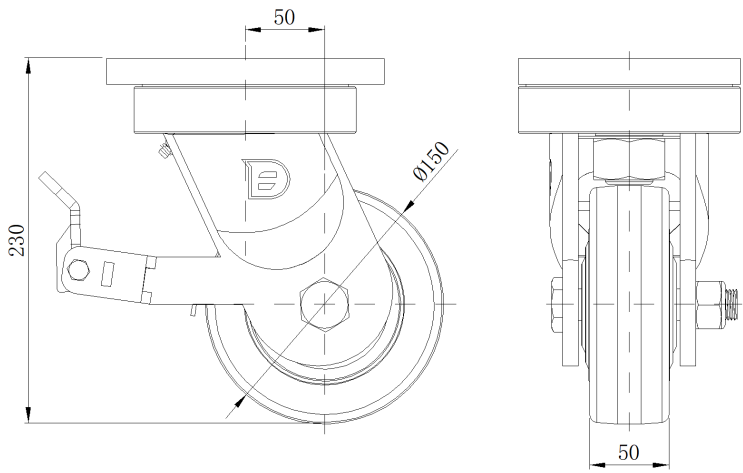
Technical Data

<input checked="" type="radio"/> Imperial <input type="radio"/> Metric	
Wheel Diameter	6 "
Wheel Width	2 "
Wheel Bearing	Wheels With Ball Bearings
Plate Size	7 " x 5-9/16 "
Bolt Hole Spacing	5-1/2"x4-1/8"
Plate Hole	11/16 "
Offset	2 "
Swivel Interference	10-1/2 "
Overall Height	9-1/8 "
Swivel Radius	5-1/4 "
Hardness Of Tread	82±5° Shore D
Load Capacity (Dynamic)	3748lbs
Load Capacity (Static)	5622lbs
Temperature	-13°F to +176°F
Fork Type	Swivel Caster With Rear Brake
Stainless	N/A
Electrical Conductivity	N/A
Anti-Static	N/A
Weight	25.8lbs
Standard	ISO22883

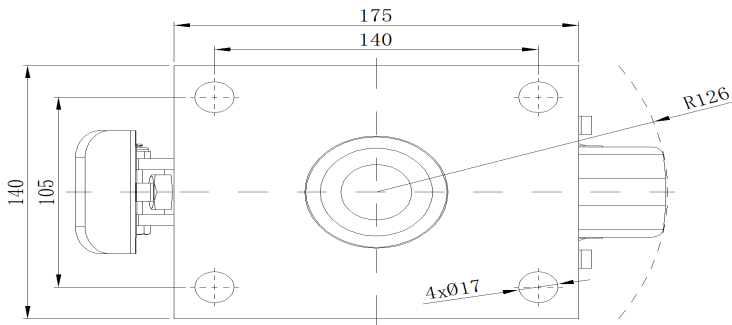
Advantages at a glance

Rolling Resistance	● ● ● ● ●
Operating Noise	● ● ○ ○ ○
Floor Surface Preservation	● ● ○ ○ ○

Dimensions



Mounting



* For any deviation between metric and imperial spec, please refer to the metric spec.