

Product Information Sheet

1162D Super Heavy Duty Casters Series (Double Wheel)



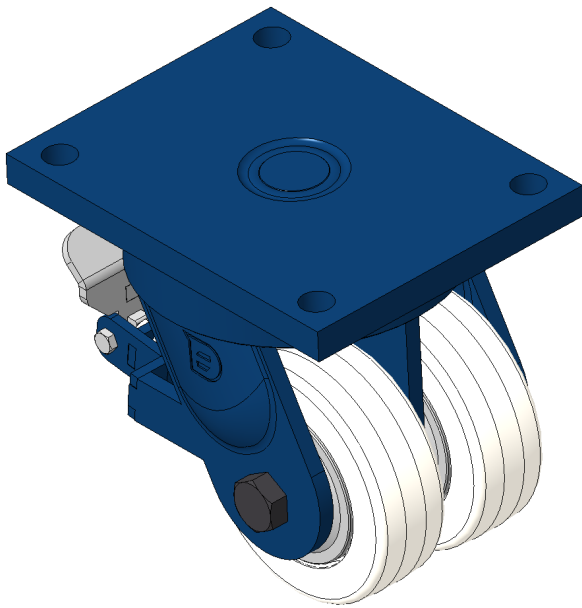
MC Nylon Wheel (Off-White) Wheel Diameter × Wheel Width 150 × 50mm

EAN  
KS-11620600074311

Double-row Casters with live brakes, Welded Caster Fork, blue paint finish  
Base plate Mounting Type device, 140x105mm Bolt Hole Spacing  
Reinforced Polypropylene Wheel Center and Wheel Tread, off-white  
Bearings—Ball Bearings

Wheel surface: thermoplastic  
Wheel Center: thermoplastic

Drawings are for reference only and may differ from the product



Picture may differ from original product

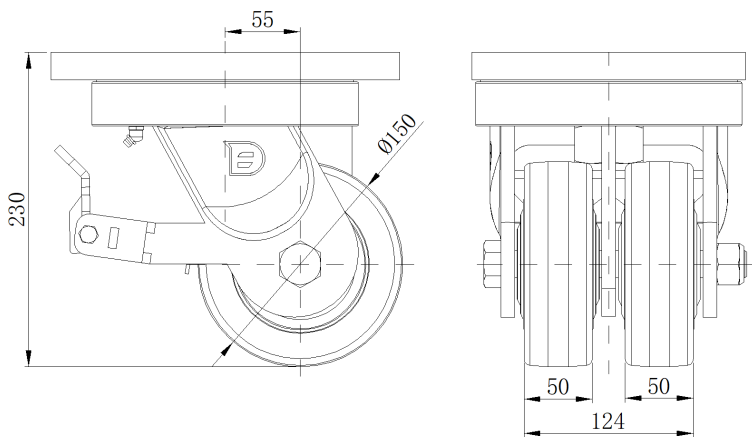
Technical Data

<input checked="" type="radio"/> Metric <input type="radio"/> Imperial	
Wheel Diameter	150mm
Wheel Width	50mm
Wheel Bearing	Wheels With Ball Bearings
Plate Size	255 x 200mm
Bolt Hole Spacing	210 x 160mm
Plate Hole	21mm
Offset	55mm
Swivel Interference	286mm
Overall Height	230mm
Swivel Radius	143mm
Hardness Of Tread	82±5° Shore D
Load Capacity (Dynamic)	3000kgs
Load Capacity (Static)	4500kgs
Temperature	-25°C to +80°C
Fork Type	Swivel Caster With Rear Brake
Stainless	N/A
Electrical Conductivity	N/A
Anti-Static	N/A
Weight	22.60kgs
Standard	ISO22883

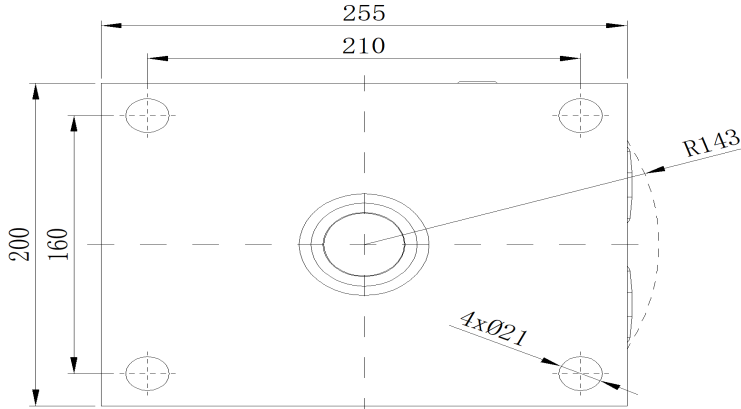
Advantages at a glance

Rolling Resistance	● ● ● ● ●
Operating Noise	● ● ○ ○ ○
Floor Surface Preservation	● ● ○ ○ ○

Dimensions



Mounting



\* For any deviation between metric and imperial spec, please refer to the metric spec.