

1162D Super Heavy Duty Casters Series (Double Wheel)



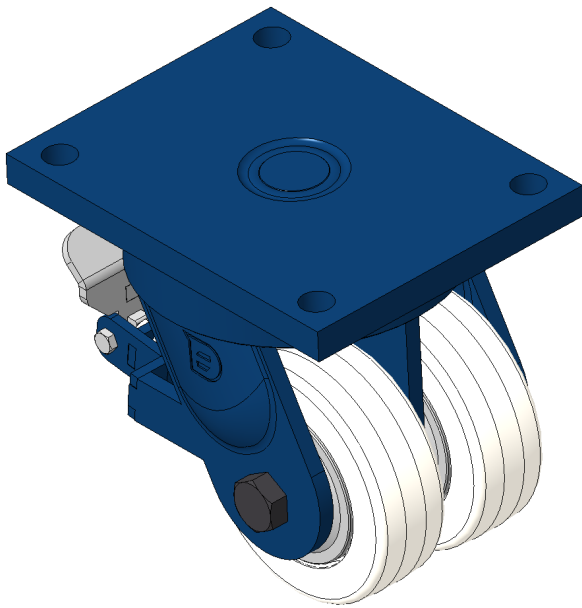
MC Nylon Wheel (Off-White) Wheel Diameter × Wheel Width 150 × 50mm

EAN  
KS-11620600074311

Double-row Casters with live brakes, Welded Caster Fork, blue paint finish  
Base plate Mounting Type device, 140x105mm Bolt Hole Spacing  
Reinforced Polypropylene Wheel Center and Wheel Tread, off-white  
Bearings—Ball Bearings

Wheel surface: thermoplastic  
Wheel Center: thermoplastic

Drawings are for reference only and may differ from the product



Picture may differ from original product

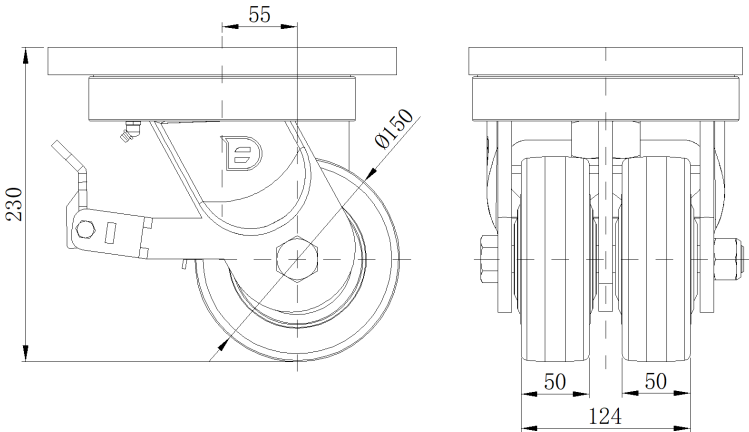
Technical Data

|  |                               |
|--|-------------------------------|
| <input checked="" type="radio"/> Imperial <input type="radio"/> Metric |                               |
| Wheel Diameter   | 6 "                           |
| Wheel Width  | 2 "                           |
| Wheel Bearing  | Wheels With Ball Bearings     |
| Plate Size   | 10-1/16 " x 8 "               |
| Bolt Hole Spacing  | 8-17/64 " x 6-19/64 "         |
| Plate Hole   | 7/8 "                         |
| Offset   | 2-3/16 "                      |
| Swivel Interference  | 11-7/16 "                     |
| Overall Height   | 9-1/8 "                       |
| Swivel Radius  | 5-11/16 "                     |
| Hardness Of Tread  | 82±5° Shore D                 |
| Load Capacity (Dynamic)  | 6614lbs                       |
| Load Capacity (Static)   | 9921lbs                       |
| Temperature  | -13°F to +176°F               |
| Fork Type  | Swivel Caster With Rear Brake |
| Stainless  | N/A                           |
| Electrical Conductivity  | N/A                           |
| Anti-Static  | N/A                           |
| Weight   | 49.8lbs                       |
| Standard   | ISO22883                      |

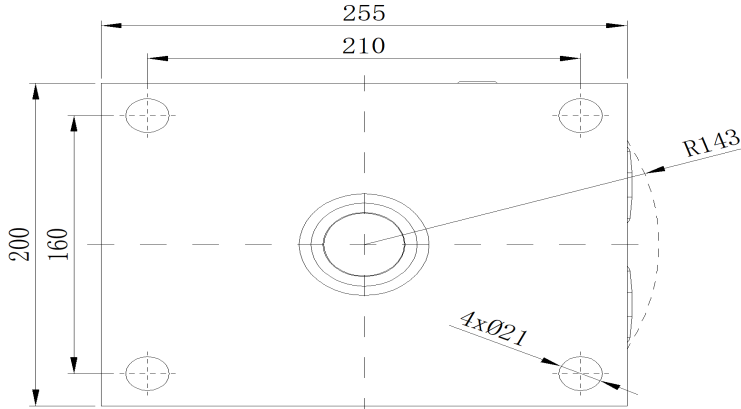
Advantages at a glance

|                            |           |
|----------------------------|-----------|
| Rolling Resistance         | ● ● ● ● ● |
| Operating Noise            | ● ● ○ ○ ○ |
| Floor Surface Preservation | ● ● ○ ○ ○ |

Dimensions



Mounting



\* For any deviation between metric and imperial spec, please refer to the metric spec.