

1162 Super Heavy Duty Casters Series (Single Wheel)



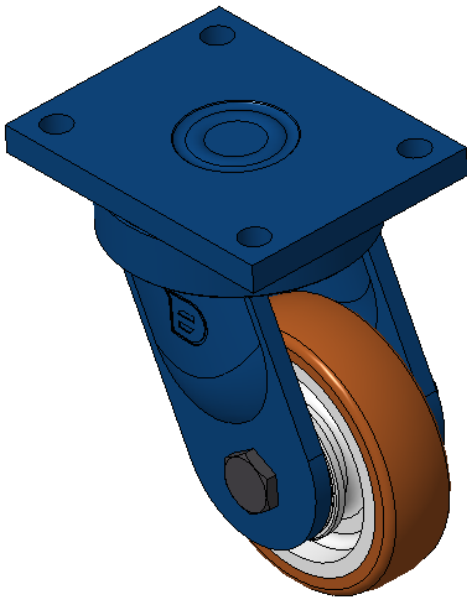
VQPU (brown round) Wheel Diameter x Wheel Width 150 x 42mm

EAN
KS-11620600542011

Portable Casters, Welded Caster Fork, blue paint finish.
Base plate Mounting Type device, 140x105mm Bolt Hole Spacing.
Cast Iron Wheel Center, High Quality Polyurethane Wheel Tread, Cast Iron brown.
Bearing—skew ball bearing.

Wheel Tread: Hhigh-Quality Polyurethane
Wheel Center: Iron core / Cast iron core

Drawings are for reference only and may differ from the product



Picture may differ from original product

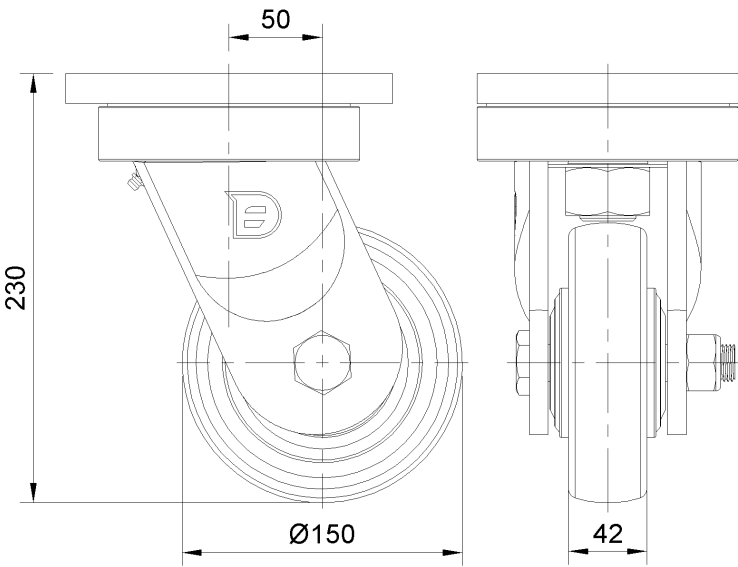
Technical Data

<input checked="" type="radio"/> Metric <input type="radio"/> Imperial	
Wheel Diameter	150mm
Wheel Width	42mm
Wheel Bearing	Wheel With Taper Roller Bearings
Plate Size	175 x 140mm
Bolt Hole Spacing	140x105mm
Plate Hole	17mm
Offset	50mm
Swivel Interference	252mm
Overall Height	230mm
Swivel Radius	126mm
Hardness Of Tread	92±5° Shore A
Load Capacity (Dynamic)	650kgs
Load Capacity (Static)	975kgs
Temperature	-20°C to +70°C
Fork Type	Swivel Caster
Stainless	N/A
Electrical Conductivity	N/A
Anti-Static	N/A
Weight	11.74kgs
Standard	ISO22883

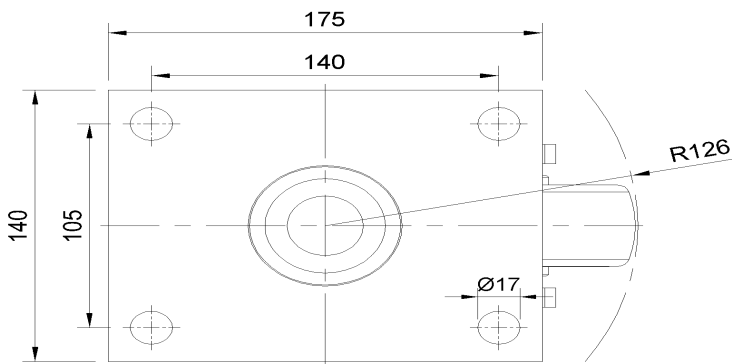
Advantages at a glance

Rolling Resistance	● ● ● ● ●
Operating Noise	● ● ● ● ●
Floor Surface Preservation	● ● ● ● ●

Dimensions



Mounting



* For any deviation between metric and imperial spec, please refer to the metric spec.