

1162D Super Heavy Duty Casters Series (Double Wheel)



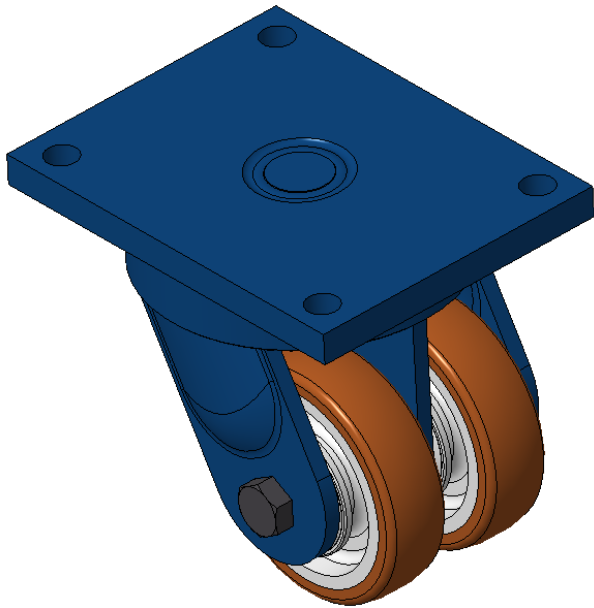
VQPU (brown round) Wheel Diameter x Wheel Width 150 x 42mm

EAN  
KS-11620600542311

Portable Casters, Welded Caster Fork, blue painted finish.  
Base plate Mounting Type device, 210x160mm Bolt Hole Spacing.  
Cast Iron Wheel Center, High Quality Polyurethane Wheel Tread, Cast Iron brown.  
Bearings—skew ball bearings.

Wheel Tread: Hhigh-Quality Polyurethane  
Wheel Center: Iron core / Cast iron core

Drawings are for reference only and may differ from the product



Picture may differ from original product

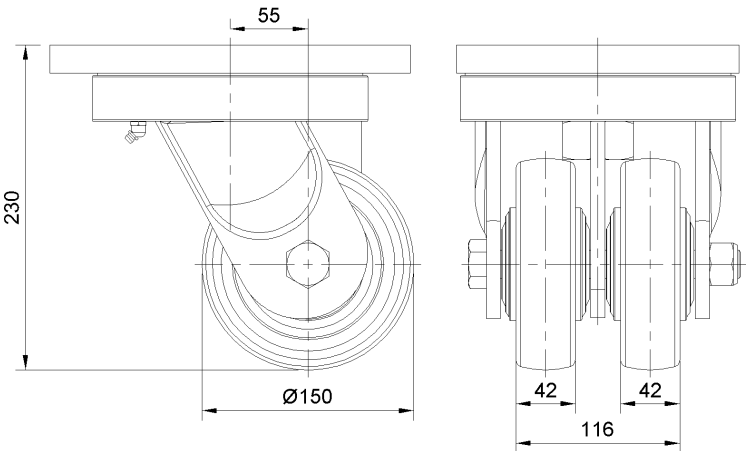
Technical Data

<input checked="" type="radio"/> Metric <input type="radio"/> Imperial	
Wheel Diameter	150mm
Wheel Width	116mm
Wheel Bearing	Wheel With Taper Roller Bearings
Plate Size	255 x 200mm
Bolt Hole Spacing	210 x 160mm
Plate Hole	21mm
Offset	55mm
Swivel Interference	280mm
Overall Height	230mm
Swivel Radius	140mm
Hardness Of Tread	92±5° Shore A
Load Capacity (Dynamic)	1200kgs
Load Capacity (Static)	1800kgs
Temperature	-20°C to +70°C
Fork Type	Swivel Caster
Stainless	N/A
Electrical Conductivity	N/A
Anti-Static	N/A
Weight	23.66kgs
Standard	ISO22883

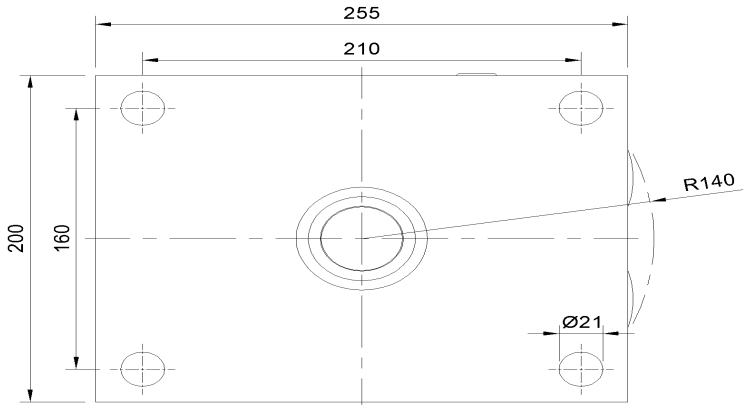
Advantages at a glance

Rolling Resistance	● ● ● ● ●
Operating Noise	● ● ● ● ●
Floor Surface Preservation	● ● ● ● ●

Dimensions



Mounting



\* For any deviation between metric and imperial spec, please refer to the metric spec.