

1162D Super Heavy Duty Casters Series (Double Wheel)



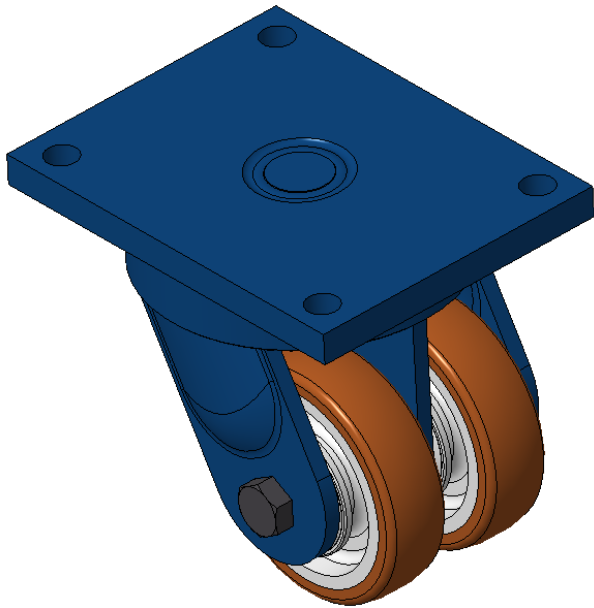
VQPU (brown round) Wheel Diameter x Wheel Width 150 x 42mm

EAN
KS-11620600542311

Portable Casters, Welded Caster Fork, blue painted finish.
Base plate Mounting Type device, 210x160mm Bolt Hole Spacing.
Cast Iron Wheel Center, High Quality Polyurethane Wheel Tread, Cast Iron brown.
Bearings—skew ball bearings.

Wheel Tread: Hhigh-Quality Polyurethane
Wheel Center: Iron core / Cast iron core

Drawings are for reference only and may differ from the product



Picture may differ from original product

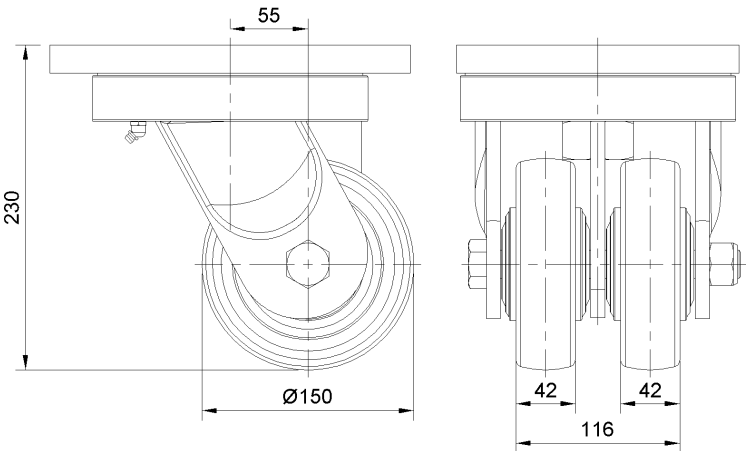
Technical Data

<input checked="" type="radio"/> Imperial <input type="radio"/> Metric	
Wheel Diameter	6 "
Wheel Width	4-5/8 "
Wheel Bearing	Wheel With Taper Roller Bearings
Plate Size	10-1/16 " x 8 "
Bolt Hole Spacing	8-17/64 " x 6-19/64 "
Plate Hole	7/8 "
Offset	2-3/16 "
Swivel Interference	11-1/16 "
Overall Height	9-1/8 "
Swivel Radius	5-9/16 "
Hardness Of Tread	92±5° Shore A
Load Capacity (Dynamic)	2646lbs
Load Capacity (Static)	3968lbs
Temperature	-4°F to +158°F
Fork Type	Swivel Caster
Stainless	N/A
Electrical Conductivity	N/A
Anti-Static	N/A
Weight	52.2lbs
Standard	ISO22883

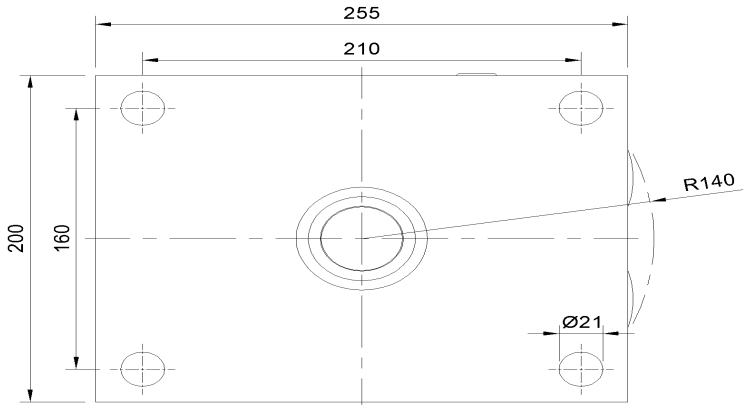
Advantages at a glance

Rolling Resistance	● ● ● ● ●
Operating Noise	● ● ● ● ●
Floor Surface Preservation	● ● ● ● ●

Dimensions



Mounting



* For any deviation between metric and imperial spec, please refer to the metric spec.