



1162 Super Heavy Duty Casters Series (Single Wheel)

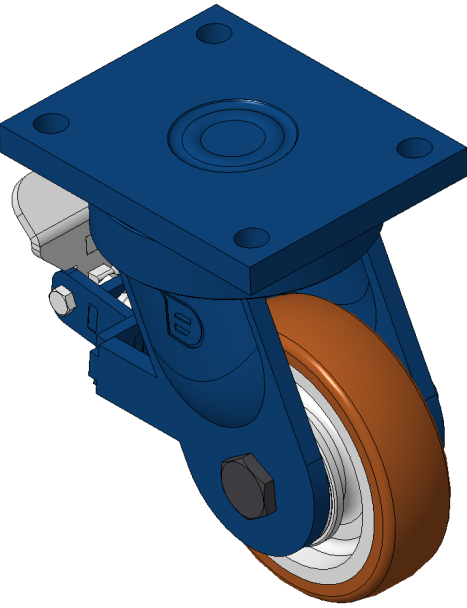
VQPU (brown round) Wheel Diameter x Wheel Width 150 x 42mm

EAN
KS-11620600544011

Rear brake Caster, Welded Caster Fork, blue paint finish.
Base plate Mounting Type device, 140x105mm Bolt Hole Spacing.
Cast Iron Wheel Center, High Quality Polyurethane Wheel Tread, Cast Iron brown.
Bearing—skew ball bearing.

Wheel Tread: Hhigh-Quality Polyurethane
Wheel Center: Iron core / Cast iron core

Drawings are for reference only and may differ from the product



Picture may differ from original product

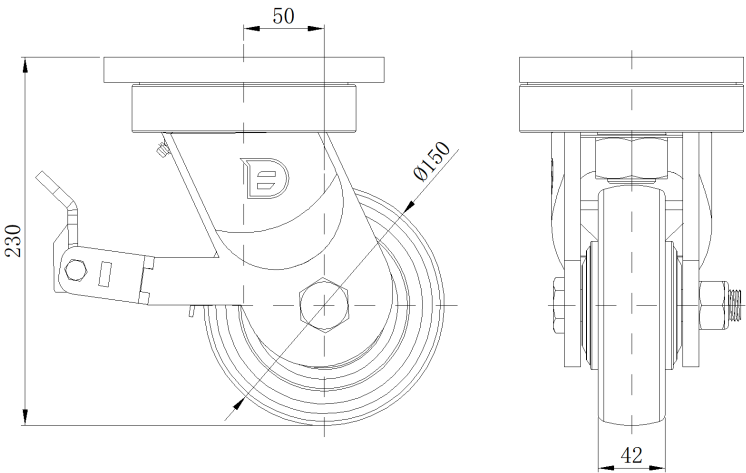
Technical Data

<input checked="" type="radio"/> Imperial <input type="radio"/> Metric	
Wheel Diameter	6 "
Wheel Width	1-11/16 "
Wheel Bearing	Wheel With Taper Roller Bearings
Plate Size	7 " x 5-9/16 "
Bolt Hole Spacing	5-1/2"x4-1/8"
Plate Hole	11/16 "
Offset	2 "
Swivel Interference	10-1/2 "
Overall Height	9-1/8 "
Swivel Radius	5-1/4 "
Hardness Of Tread	92±5° Shore A
Load Capacity (Dynamic)	1433lbs
Load Capacity (Static)	2150lbs
Temperature	-4°F to +158°F
Fork Type	Swivel Caster With Rear Brake
Stainless	N/A
Electrical Conductivity	N/A
Anti-Static	N/A
Weight	27.6lbs
Standard	ISO22883

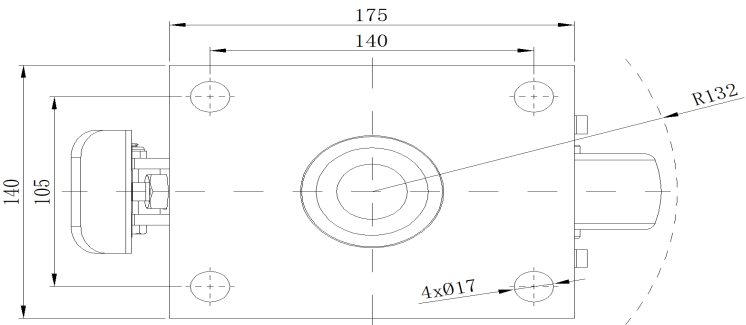
Advantages at a glance

Rolling Resistance	● ● ● ● ●
Operating Noise	● ● ● ● ●
Floor Surface Preservation	● ● ● ● ●

Dimensions



Mounting



* For any deviation between metric and imperial spec, please refer to the metric spec.