



1162 Super Heavy Duty Casters Series (Single Wheel)

VXPU (burgundy round) Wheel Diameter x Wheel Width 150 x 42mm

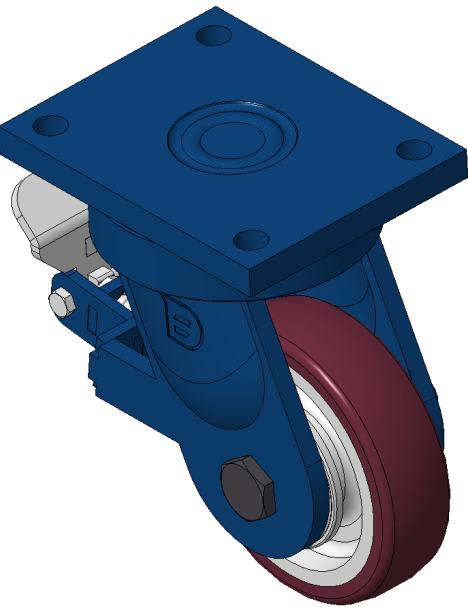
EAN

KS-11620600694011

Rear brake Caster, Welded Caster Fork, blue painted finish Mounting Type - Top Plate, 140x105mm Bolt Hole Spacing Cast Iron Wheel Center, High Quality Polyurethane tread, Cast Iron burgundy Bearing – Taper Roller Bearing

Wheel tread: Made of high-quality polyurethane  
Wheel Center: iron core/cast iron core

Drawings are for reference only and may differ from the product



Picture may differ from original product

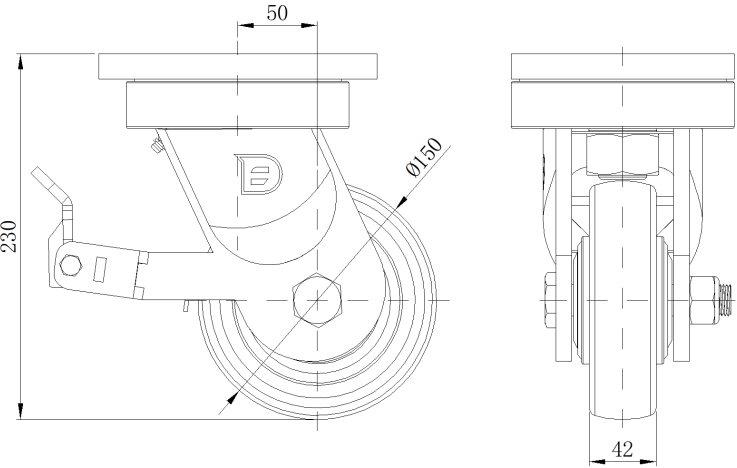
Technical Data

<input checked="" type="radio"/> Imperial <input type="radio"/> Metric	
Wheel Diameter	6 "
Wheel Width	1-11/16 "
Wheel Bearing	Wheels With Ball Bearings
Plate Size	7 " x 5-9/16 "
Bolt Hole Spacing	5-1/2"x4-1/8"
Plate Hole	11/16 "
Offset	2 "
Swivel Interference	10-1/2 "
Overall Height	9-1/8 "
Swivel Radius	5-1/4 "
Hardness Of Tread	93±5° Shore A
Load Capacity (Dynamic)	1433lbs
Load Capacity (Static)	2150lbs
Temperature	-4°F to +158°F
Fork Type	Swivel Caster With Rear Brake
Stainless	N/A
Electrical Conductivity	N/A
Anti-Static	N/A
Weight	27.6lbs
Standard	ISO22883

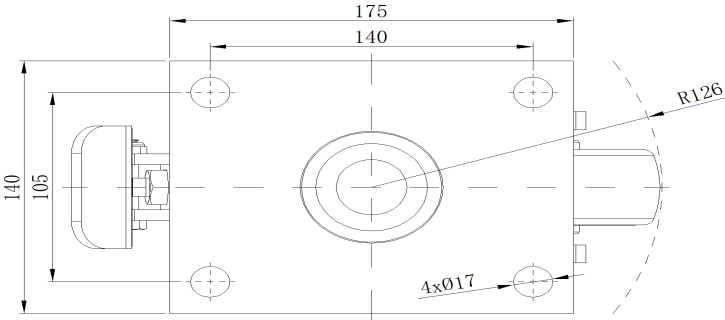
Advantages at a glance

Rolling Resistance	● ● ● ○ ○
Operating Noise	● ● ● ● ○
Floor Surface Preservation	● ● ● ● ○

Dimensions



Mounting



\* For any deviation between metric and imperial spec, please refer to the metric spec.