

1162 Super Heavy Duty Casters Series (Single Wheel)



MC Nylon Wheel (Off-White) Wheel Diameter×Wheel Width 200×65mm

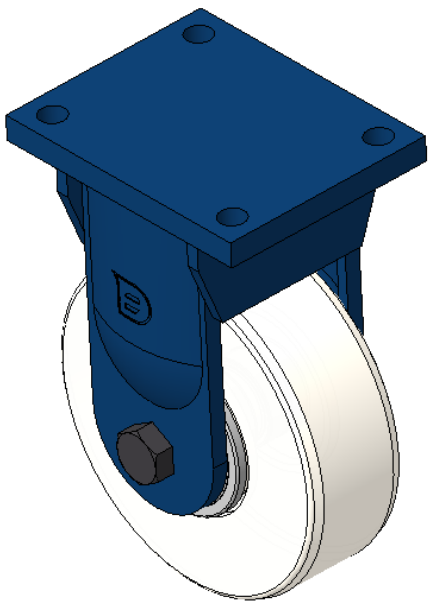
EAN

KS-11620800071021

Rigid Casters, Welded Caster Fork, blue paint finish. Base plate Mounting Type device, 140x105mm Bolt Hole Spacing. Reinforced Polypropylene Wheel Center and Wheel Tread, off-white. Bearing—skew ball bearing.

Wheel surface: thermoplastic  
Wheel Center: thermoplastic

Drawings are for reference only and may differ from the product



Picture may differ from original product

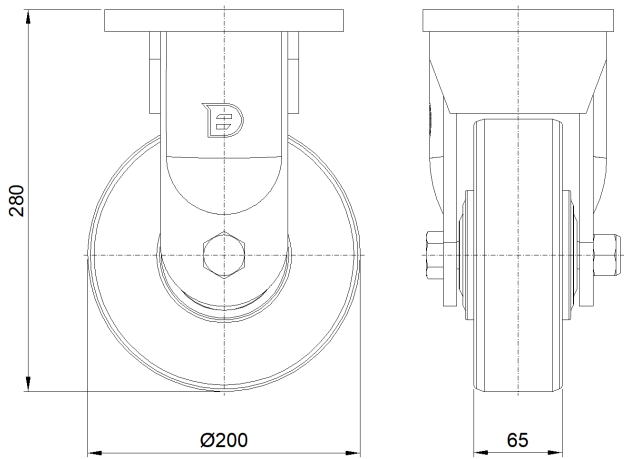
Technical Data

<input checked="" type="radio"/> Metric <input type="radio"/> Imperial	
Wheel Diameter	200mm
Wheel Width	65mm
Wheel Bearing	Wheels With Ball Bearings
Plate Size	175 x 140mm
Bolt Hole Spacing	140x105mm
Plate Hole	17mm
Overall Height	280mm
Hardness Of Tread	82±5° Shore D
Load Capacity (Dynamic)	2500kgs
Load Capacity (Static)	3750kgs
Temperature	-25°C to +80°C
Fork Type	Rigid Caster
Stainless	N/A
Electrical Conductivity	N/A
Anti-Static	N/A
Weight	10.09kgs
Standard	ISO22883

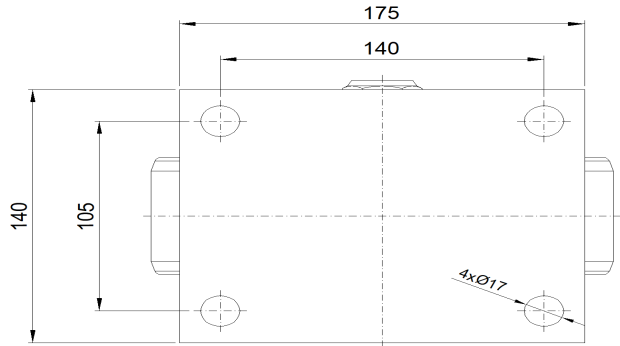
Advantages at a glance

Rolling Resistance	● ● ● ● ●
Operating Noise	● ● ○ ○ ○
Floor Surface Preservation	● ● ○ ○ ○

Dimensions



Mounting



\* For any deviation between metric and imperial spec, please refer to the metric spec.