

1162D Super Heavy Duty Casters Series (Double Wheel)



MC Nylon Wheel (Off-White) Wheel Diameter×Wheel Width 200×65mm

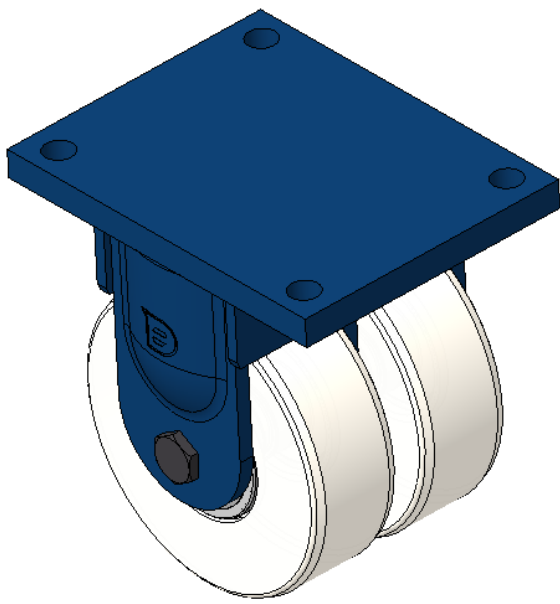
EAN

KS-11620800071311

Rigid Casters, Welded Caster Fork, blue paint finish. Base plate Mounting Type device, 210x160mm Bolt Hole Spacing. Reinforced Polypropylene Wheel Center and Wheel Tread, off-white. Bearing—skew ball bearing.

Wheel surface: thermoplastic
Wheel Center: thermoplastic

Drawings are for reference only and may differ from the product



Picture may differ from original product

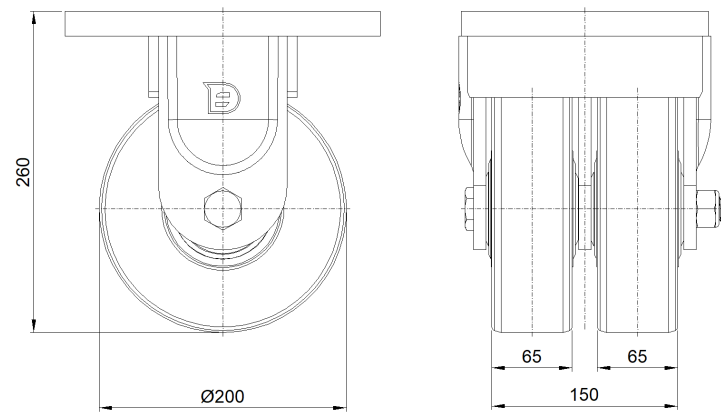
Technical Data

| | |
|--|---------------------------|
| <input checked="" type="radio"/> Imperial <input type="radio"/> Metric | |
| Wheel Diameter | 8 " |
| Wheel Width | 6 " |
| Wheel Bearing | Wheels With Ball Bearings |
| Plate Size | 10-1/16 " x 8 " |
| Bolt Hole Spacing | 8-17/64 " x 6-19/64 " |
| Plate Hole | 7/8 " |
| Overall Height | 10-3/8 " |
| Hardness Of Tread | 82±5° Shore D |
| Load Capacity (Dynamic) | 9921lbs |
| Load Capacity (Static) | 14881lbs |
| Temperature | -13°F to +176°F |
| Fork Type | Rigid Caster |
| Stainless | N/A |
| Electrical Conductivity | N/A |
| Anti-Static | N/A |
| Weight | 42.7lbs |
| Standard | ISO22883 |

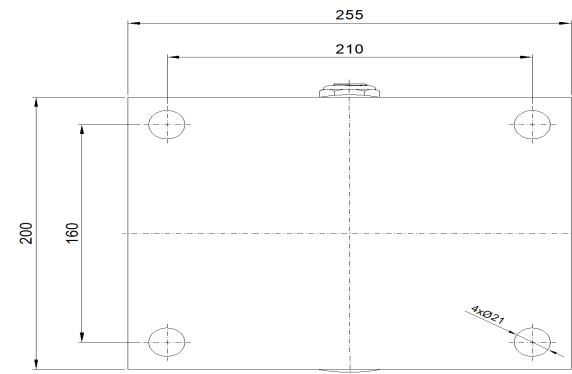
Advantages at a glance

| | |
|----------------------------|-----------|
| Rolling Resistance | ● ● ● ● ● |
| Operating Noise | ● ● ○ ○ ○ |
| Floor Surface Preservation | ● ● ○ ○ ○ |

Dimensions



Mounting



* For any deviation between metric and imperial spec, please refer to the metric spec.