

Product Information Sheet

1162D Super Heavy Duty Casters Series (Double Wheel)



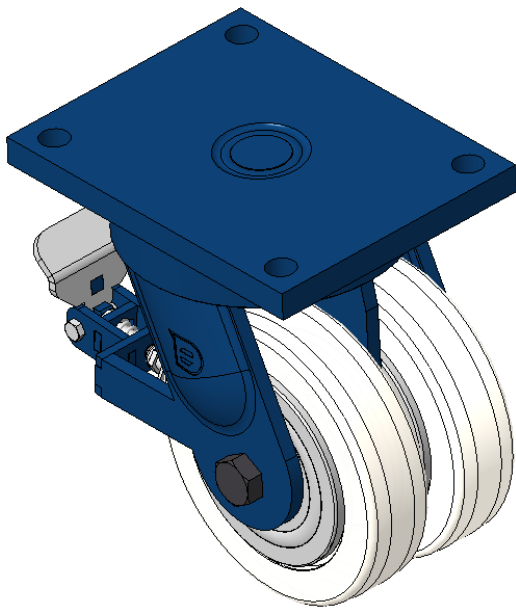
MC Nylon Wheel (Off-White) Wheel Diameter × Wheel Width 200 × 50mm

EAN  
KS-11620800074321

Rear brake Caster, Welded Caster Fork, blue paint finish  
Base plate Mounting Type device, 210x160mm Bolt Hole Spacing  
Reinforced Polypropylene Wheel Center and Wheel Tread, off-white  
Bearing—slanted ball bearing

Wheel Tread: Hhigh-Quality Polyurethane  
Wheel Center: Iron core / Cast iron core

Drawings are for reference only and may differ from the product



Picture may differ from original product

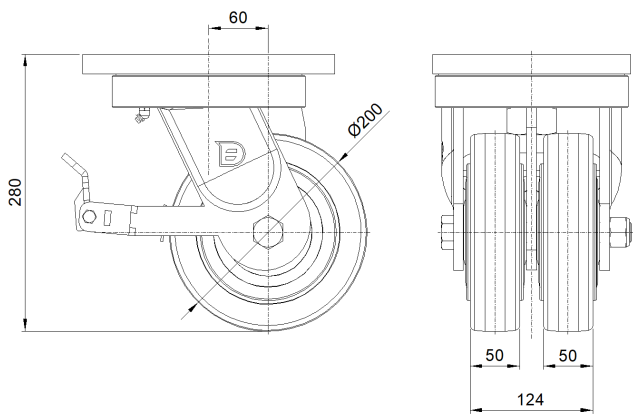
Technical Data

<input checked="" type="radio"/> Imperial <input type="radio"/> Metric	
Wheel Diameter	8 "
Wheel Width	4-7/8 "
Wheel Bearing	Wheels With Ball Bearings
Plate Size	10-1/16 " x 8 "
Bolt Hole Spacing	8-17/64 " x 6-19/64 "
Plate Hole	7/8 "
Overall Height	11-1/16 "
Hardness Of Tread	82±5° Shore D
Load Capacity (Dynamic)	7496lbs
Load Capacity (Static)	11244lbs
Temperature	-13°F to +176°F
Fork Type	Swivel Caster With Rear Brake
Stainless	N/A
Electrical Conductivity	N/A
Anti-Static	N/A
Weight	57.6lbs
Standard	ISO22883

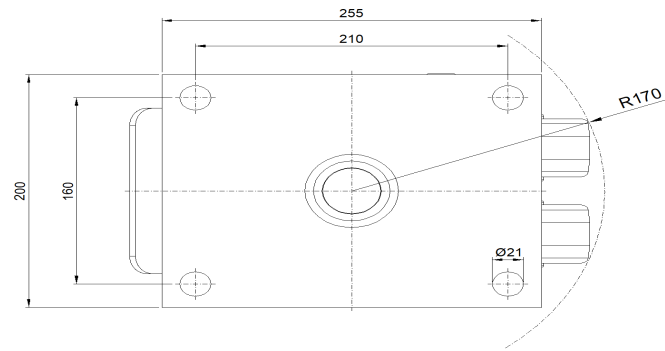
Advantages at a glance

Rolling Resistance	● ● ● ● ●
Operating Noise	● ● ○ ○ ○
Floor Surface Preservation	● ● ○ ○ ○

Dimensions



Mounting



\* For any deviation between metric and imperial spec, please refer to the metric spec.