

1162D Super Heavy Duty Casters Series (Double Wheel)



VQPU (brown round) Wheel Diameter x Wheel Width 200 x 50mm

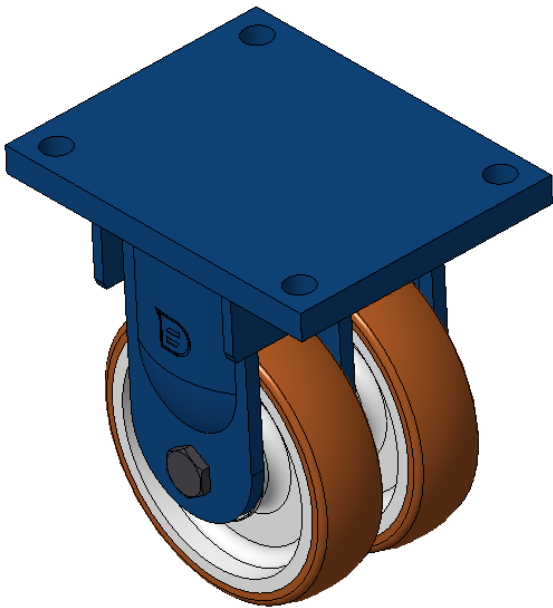
EAN

KS-11620800541311

Rigid Caster with Welded Caster Fork, blue painted finish Mounting Type - Top Plate, 210x160 Bolt Hole Spacing Cast Iron Wheel Center with High Quality Polyurethane tread, Cast Iron brown Bearing – Taper Roller Bearing

Wheel tread: Made of high-quality polyurethane
Wheel Center: iron core/cast iron core

Drawings are for reference only and may differ from the product



Picture may differ from original product

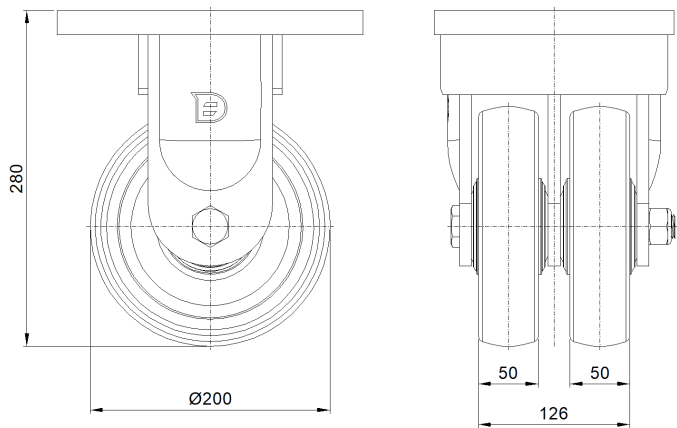
Technical Data

| | |
|--|----------------------------------|
| <input checked="" type="radio"/> Metric <input type="radio"/> Imperial | |
| Wheel Diameter | 200mm |
| Wheel Width | 126mm |
| Wheel Bearing | Wheel With Taper Roller Bearings |
| Plate Size | 255 x 200mm |
| Bolt Hole Spacing | 210 x 160mm |
| Plate Hole | 21mm |
| Overall Height | 280mm |
| Hardness Of Tread | 92±5° Shore A |
| Load Capacity (Dynamic) | 1600kgs |
| Load Capacity (Static) | 2400kgs |
| Temperature | -20°C to +70°C |
| Fork Type | Rigid Caster |
| Stainless | N/A |
| Electrical Conductivity | N/A |
| Anti-Static | N/A |
| Weight | 23.68kgs |
| Standard | ISO22883 |

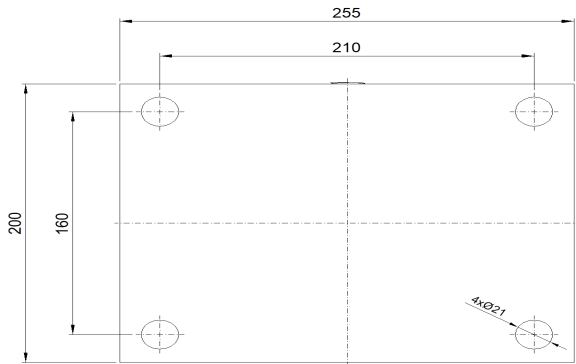
Advantages at a glance

| | |
|----------------------------|-----------|
| Rolling Resistance | ● ● ● ● ● |
| Operating Noise | ● ● ● ● ● |
| Floor Surface Preservation | ● ● ● ● ● |

Dimensions



Mounting



* For any deviation between metric and imperial spec, please refer to the metric spec.