

1162D Super Heavy Duty Casters Series (Double Wheel)



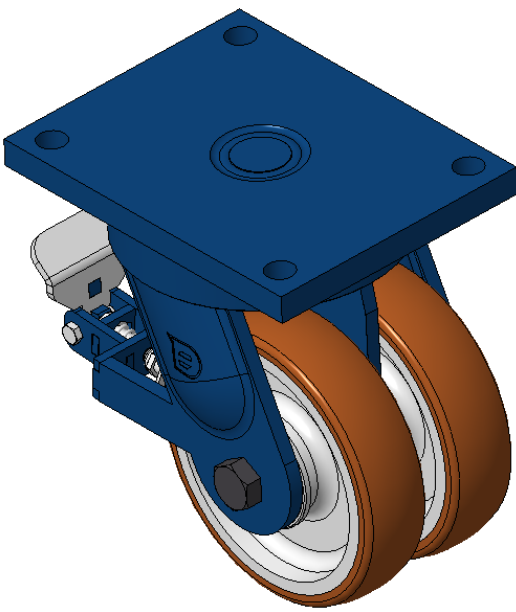
VQPU (brown round) Wheel Diameter x Wheel Width 200 x 50mm

EAN
KS-11620800544311

Rear brake Caster, Welded Caster Fork, blue paint finish.
Base plate Mounting Type device, 210x160mm Bolt Hole Spacing.
Cast Iron wheel Wheel Wheel Hub, High Quality Polyurethane Wheel Tread, Cast Iron brown.
Bearing—skew ball bearing.

Wheel Tread: Hhigh-Quality Polyurethane
Wheel Center: Iron core / Cast iron core

Drawings are for reference only and may differ from the product



Picture may differ from original product

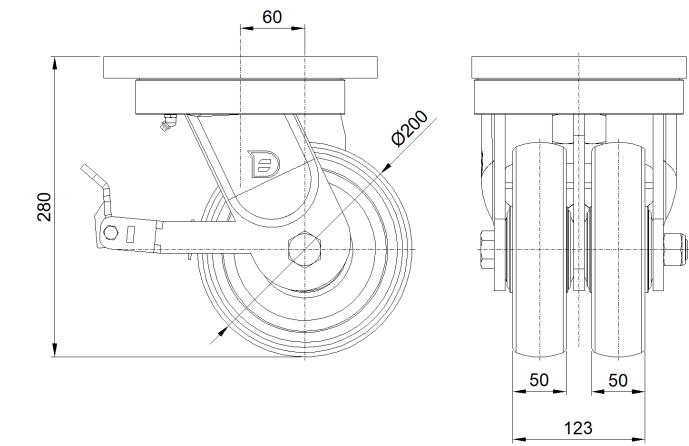
Technical Data

<input checked="" type="radio"/> Imperial <input type="radio"/> Metric	
Wheel Diameter	8 "
Wheel Width	4-7/8"
Wheel Bearing	Wheel With Taper Roller Bearings
Plate Size	10-1/16 " x 8 "
Bolt Hole Spacing	8-17/64 " x 6-19/64 "
Plate Hole	7/8 "
Offset	2-7/16 "
Swivel Interference	13-7/16 "
Overall Height	11-1/16 "
Swivel Radius	6-11/16 "
Hardness Of Tread	92±5° Shore A
Load Capacity (Dynamic)	3968lbs
Load Capacity (Static)	5952lbs
Temperature	-4°F to +158°F
Fork Type	Swivel Caster With Rear Brake
Stainless	N/A
Electrical Conductivity	N/A
Anti-Static	N/A
Weight	69.5lbs
Standard	ISO22883

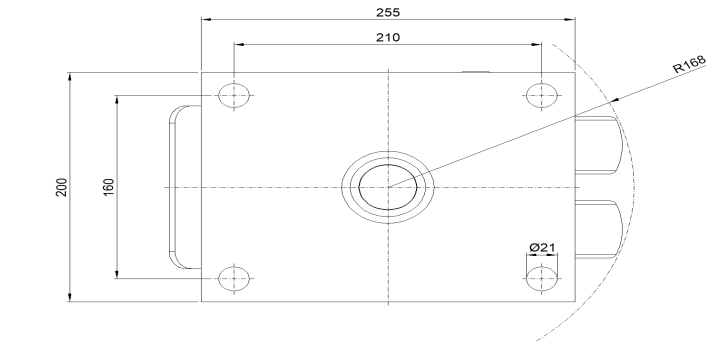
Advantages at a glance

Rolling Resistance	● ● ● ● ●
Operating Noise	● ● ● ● ●
Floor Surface Preservation	● ● ● ● ●

Dimensions



Mounting



* For any deviation between metric and imperial spec, please refer to the metric spec.