

# 1162D Super Heavy Duty Casters Series (Double Wheel)



VXPU (burgundy round) Wheel Diameter x Wheel Width 200 x 50mmm

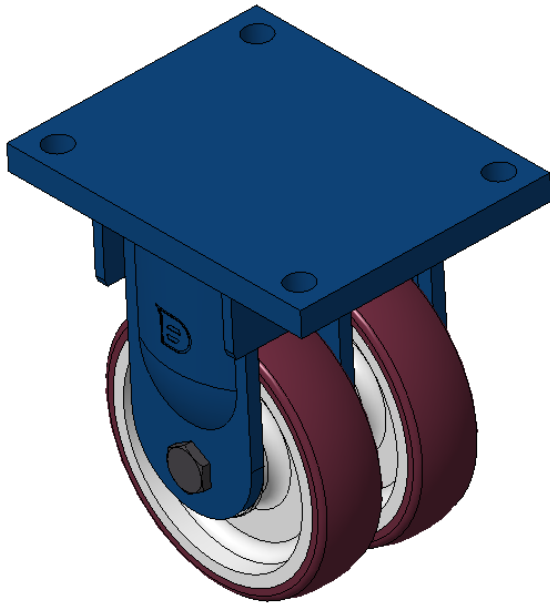
EAN

KS-11620800691311

Rigid Caster with Welded Caster Fork, blue painted finish. Mounting Type - Top Plate, 210x160 Bolt Hole Spacing. Cast Iron Wheel Center with High Quality Polyurethane tread, Cast Iron burgundy. Bearing: Taper Roller Bearing.

Wheel tread: Made of high-quality polyurethane  
Wheel Center: iron core/cast iron core

Drawings are for reference only and may differ from the product



Picture may differ from original product

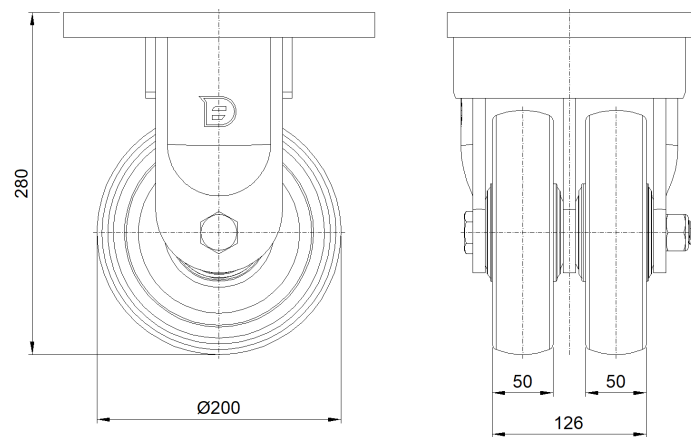
## Technical Data

● Metric ○ Imperial	
Wheel Diameter	200mm
Wheel Width	126mm
Wheel Bearing	Wheels With Ball Bearings
Plate Size	255 x 200mm
Bolt Hole Spacing	210 x 160mm
Plate Hole	21mm
Overall Height	280mm
Hardness Of Tread	93±5° Shore A
Load Capacity (Dynamic)	1800kgs
Load Capacity (Static)	2700kgs
Temperature	-20°C to +70°C
Fork Type	Rigid Caster
Stainless	N/A
Electrical Conductivity	N/A
Anti-Static	N/A
Weight	23.68kgs
Standard	ISO22883

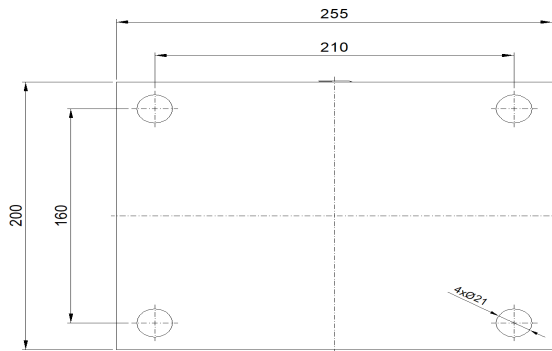
## Advantages at a glance

Rolling Resistance	● ● ● ○ ○
Operating Noise	● ● ● ● ○
Floor Surface Preservation	● ● ● ● ○

## Dimensions



## Mounting



\* For any deviation between metric and imperial spec, please refer to the metric spec.