

1162 Super Heavy Duty Casters Series (Single Wheel)



VXPU (burgundy round) Wheel Diameter x Wheel Width 200 x 50mmm

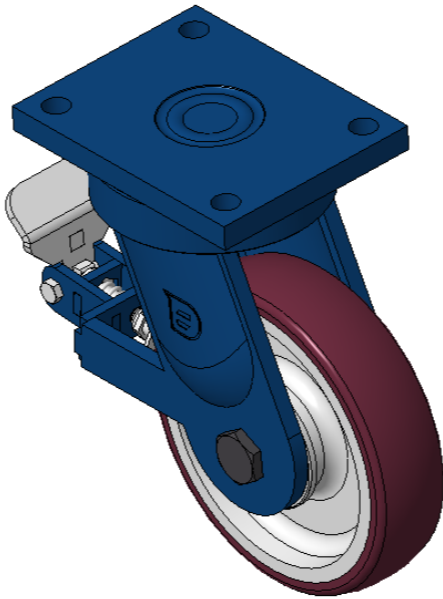
EAN

KS-11620800694011

Rear brake Caster, Welded Caster Fork, blue painted finish Mounting Type - Top Plate, 140x105mm Bolt Hole Spacing Cast Iron Wheel Center, High Quality Polyurethane tread, Cast Iron burgundy Bearing – Taper Roller Bearing

Wheel tread: Made of high-quality polyurethane  
Wheel Center: iron core/cast iron core

Drawings are for reference only and may differ from the product



Picture may differ from original product

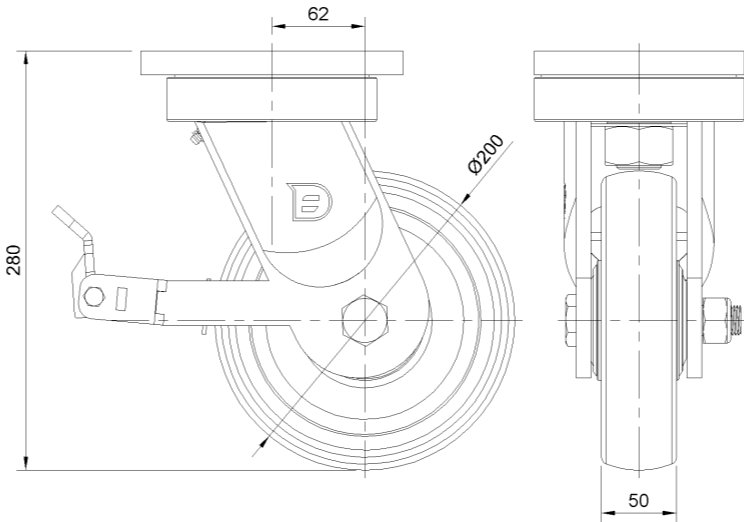
Technical Data

<input checked="" type="radio"/> Metric <input type="radio"/> Imperial	
Wheel Diameter	200mm
Wheel Width	50mm
Wheel Bearing	Wheels With Ball Bearings
Plate Size	175 x 140mm
Bolt Hole Spacing	140x105mm
Plate Hole	17mm
Offset	62mm
Swivel Interference	326mm
Overall Height	280mm
Swivel Radius	163mm
Hardness Of Tread	93±5° Shore A
Load Capacity (Dynamic)	1000kgs
Load Capacity (Static)	1500kgs
Temperature	-20°C to +70°C
Fork Type	Swivel Caster With Rear Brake
Stainless	N/A
Electrical Conductivity	N/A
Anti-Static	N/A
Weight	15.47kgs
Standard	ISO22883

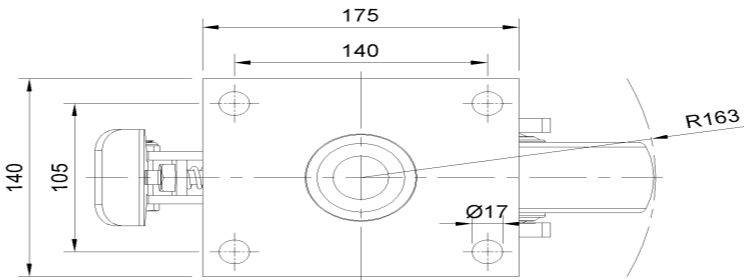
Advantages at a glance

Rolling Resistance	● ● ● ○ ○
Operating Noise	● ● ● ● ○
Floor Surface Preservation	● ● ● ● ○

Dimensions



Mounting



\* For any deviation between metric and imperial spec, please refer to the metric spec.