



1162 Super Heavy Duty Casters Series (Single Wheel)

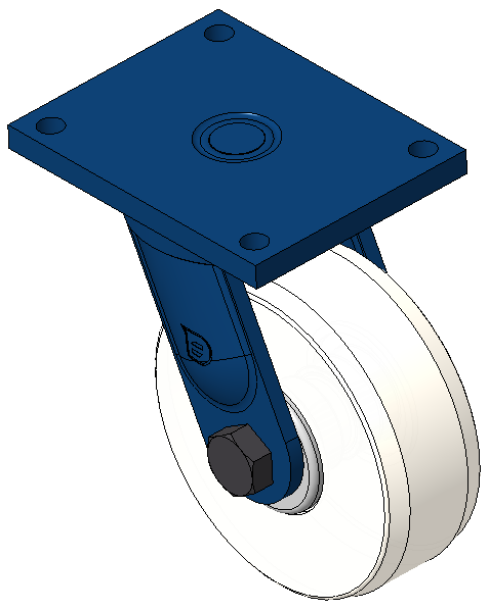
MC Nylon Wheel (Off-White) Wheel Diameter×Wheel Width 250×90mm

EAN
KS-11621000072111

Swivel Casters, Welded Caster Fork, blue paint finish
Base plate Mounting Type device, 210x160mm Bolt Hole Spacing
Reinforced Polypropylene Wheel Center and Wheel Tread, off-white
Bearing—Taper Roller Bearing

Wheel surface: thermoplastic
Wheel Center: thermoplastic

Drawings are for reference only and may differ from the product



Picture may differ from original product

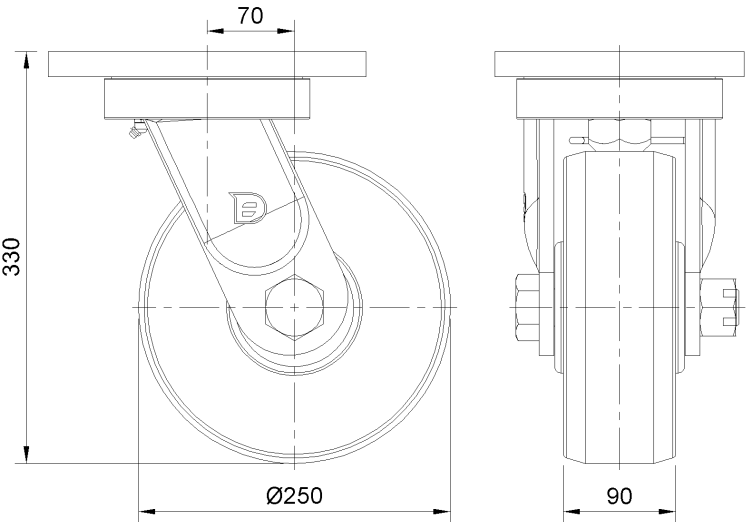
Technical Data

<input checked="" type="radio"/> Imperial <input type="radio"/> Metric	
Wheel Diameter	10 "
Wheel Width	3-9/16 "
Wheel Bearing	Wheels With Ball Bearings
Plate Size	10-1/16 " x 8 "
Bolt Hole Spacing	8-17/64 " x 6-19/64 "
Plate Hole	7/8 "
Offset	2-13/16 "
Swivel Interference	15-19/32 "
Overall Height	13 "
Swivel Radius	7-15/16 "
Hardness Of Tread	82±5° Shore D
Load Capacity (Dynamic)	10362lbs
Load Capacity (Static)	15543lbs
Temperature	-13°F to +176°F
Fork Type	Swivel Caster
Stainless	N/A
Electrical Conductivity	N/A
Anti-Static	N/A
Weight	54.9lbs
Standard	ISO22883

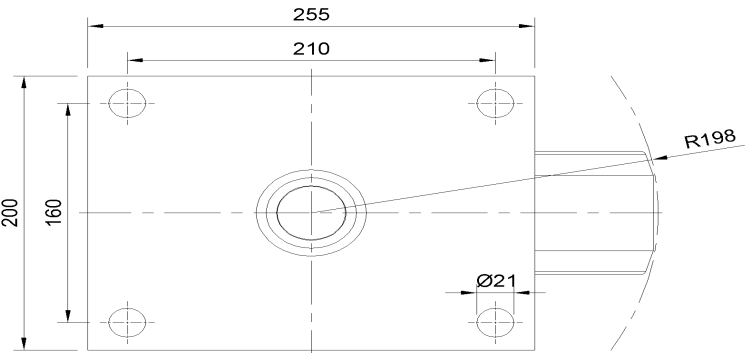
Advantages at a glance

Rolling Resistance	● ● ● ● ●
Operating Noise	● ● ○ ○ ○
Floor Surface Preservation	● ● ○ ○ ○

Dimensions



Mounting



* For any deviation between metric and imperial spec, please refer to the metric spec.