



1162 Super Heavy Duty Casters Series (Single Wheel)

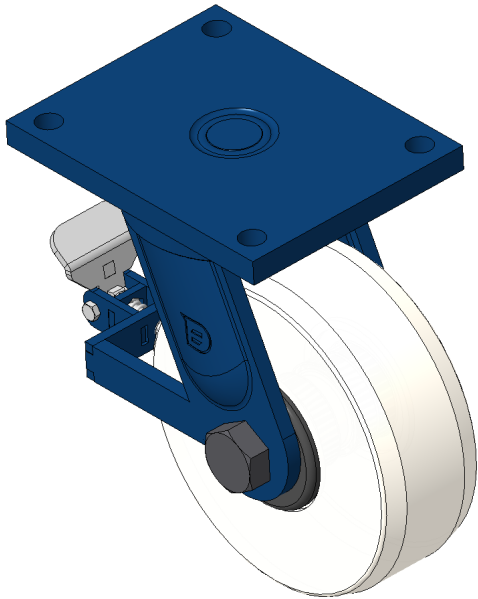
MC Nylon Wheel (Off-White) Wheel Diameter×Wheel Width 250×90mm

EAN
KS-11621000074111

Rear brake Caster, Welded Caster Fork Blue paint finish, Mounting Type - Top Plate, 210x160mm Bolt Hole Spacing Reinforced Polypropylene Wheel Center, Wheel Tread, off-white Bearings—Ball Bearings

Wheel surface: thermoplastic
Wheel Center: thermoplastic

Drawings are for reference only and may differ from the product



Picture may differ from original product

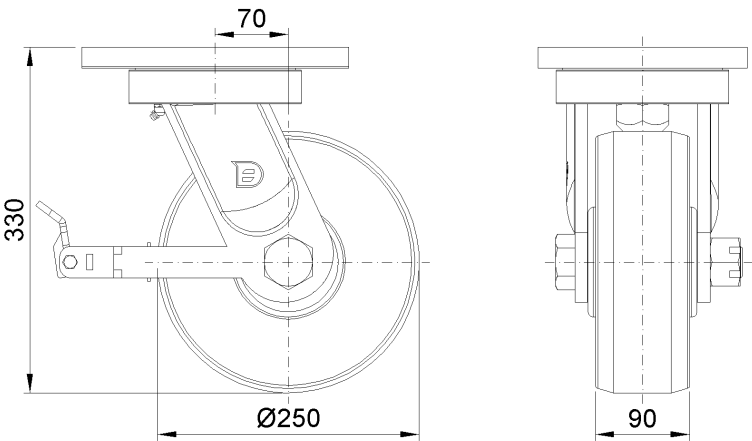
Technical Data

<input checked="" type="radio"/> Metric <input type="radio"/> Imperial	
Wheel Diameter	250mm
Wheel Width	90mm
Wheel Bearing	Wheels With Ball Bearings
Plate Size	255 x 200mm
Bolt Hole Spacing	210 x 160mm
Plate Hole	21mm
Offset	70mm
Swivel Interference	396mm
Overall Height	330mm
Swivel Radius	198mm
Hardness Of Tread	82±5° Shore D
Load Capacity (Dynamic)	4700kgs
Load Capacity (Static)	7050kgs
Temperature	-25°C to +80°C
Fork Type	Swivel Caster With Rear Brake
Stainless	N/A
Electrical Conductivity	N/A
Anti-Static	N/A
Weight	16.55kgs
Standard	ISO22883

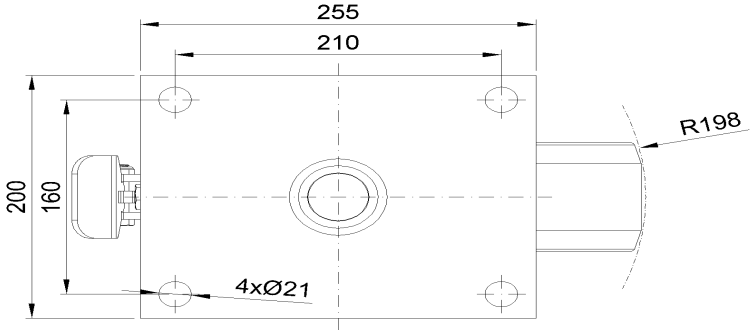
Advantages at a glance

Rolling Resistance	● ● ● ● ●
Operating Noise	● ● ○ ○ ○
Floor Surface Preservation	● ● ○ ○ ○

Dimensions



Mounting



* For any deviation between metric and imperial spec, please refer to the metric spec.