



1162 Super Heavy Duty Casters Series (Single Wheel)

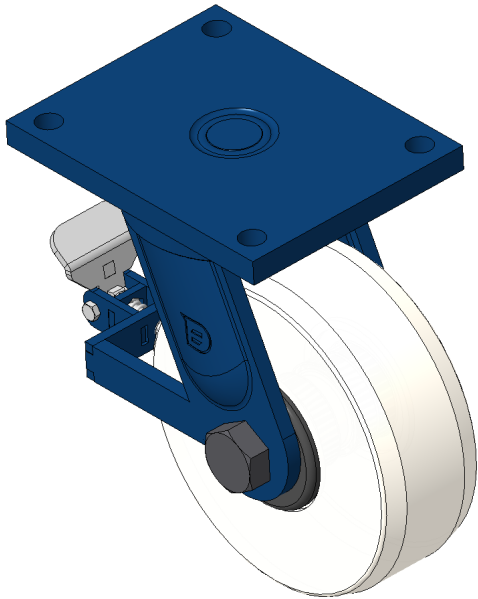
MC Nylon Wheel (Off-White) Wheel Diameter×Wheel Width 250×90mm

EAN  
KS-11621000074111

Rear brake Caster, Welded Caster Fork Blue paint finish, Mounting Type - Top Plate, 210x160mm Bolt Hole Spacing Reinforced Polypropylene Wheel Center, Wheel Tread, off-white Bearings—Ball Bearings

Wheel surface: thermoplastic  
Wheel Center: thermoplastic

Drawings are for reference only and may differ from the product



Picture may differ from original product

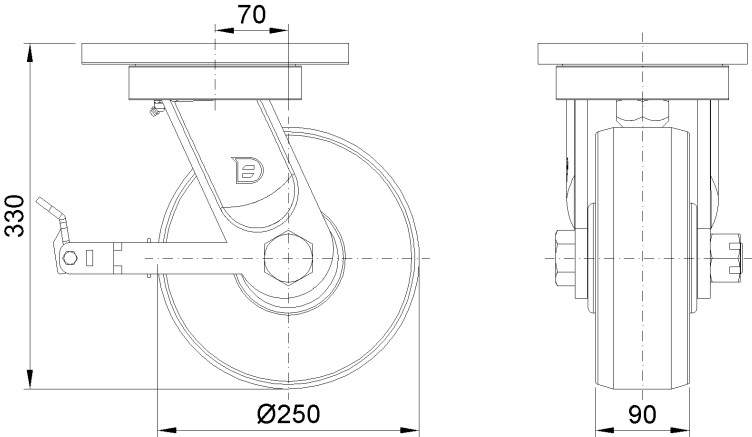
Technical Data

|  |                               |
|--|-------------------------------|
| <input checked="" type="radio"/> Imperial <input type="radio"/> Metric |                               |
| Wheel Diameter   | 10 "                          |
| Wheel Width  | 3-9/16 "                      |
| Wheel Bearing  | Wheels With Ball Bearings     |
| Plate Size   | 10-1/16 " x 8 "               |
| Bolt Hole Spacing  | 8-17/64 " x 6-19/64 "         |
| Plate Hole   | 7/8 "                         |
| Offset   | 2-13/16 "                     |
| Swivel Interference  | 15-19/32 "                    |
| Overall Height   | 13 "                          |
| Swivel Radius  | 7-15/16 "                     |
| Hardness Of Tread  | 82±5° Shore D                 |
| Load Capacity (Dynamic)  | 10362lbs                      |
| Load Capacity (Static)   | 15543lbs                      |
| Temperature  | -13°F to +176°F               |
| Fork Type  | Swivel Caster With Rear Brake |
| Stainless  | N/A                           |
| Electrical Conductivity  | N/A                           |
| Anti-Static  | N/A                           |
| Weight   | 36.5lbs                       |
| Standard   | ISO22883                      |

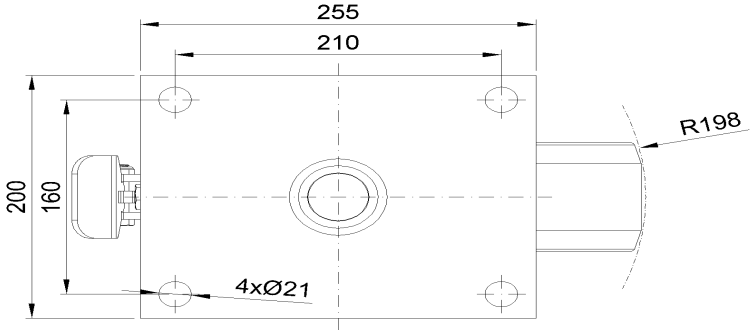
Advantages at a glance

|                            |           |
|----------------------------|-----------|
| Rolling Resistance         | ● ● ● ● ● |
| Operating Noise            | ● ● ○ ○ ○ |
| Floor Surface Preservation | ● ● ○ ○ ○ |

Dimensions



Mounting



\* For any deviation between metric and imperial spec, please refer to the metric spec.