



1162 Super Heavy Duty Casters Series (Single Wheel)

VQPU (brown round) Wheel Diameter x Wheel Width 250 x 62mm

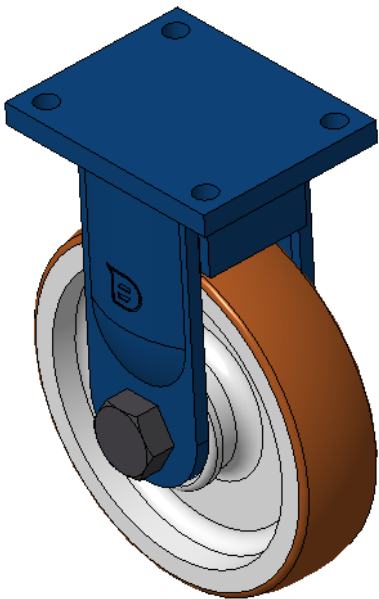
EAN

KS-11621000541011

Rigid Casters, Welded Caster Fork, blue paint finish.  
Base plate Mounting Type device, 140x105mm Bolt Hole Spacing.  
Cast Iron Wheel Center, High Quality Polyurethane Wheel Tread, Cast Iron brown.  
Bearings—skew ball bearings.

Wheel Tread: Hhigh-Quality Polyurethane  
Wheel Center: Iron core / Cast iron core

Drawings are for reference only and may differ from the product



Picture may differ from original product

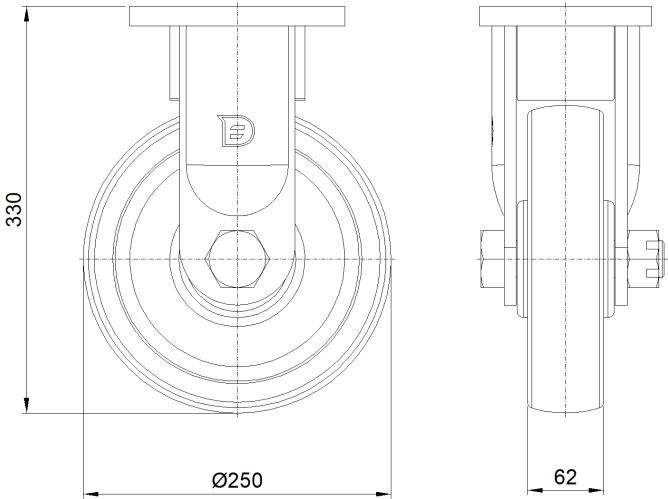
Technical Data

|  |                                  |
|--|----------------------------------|
| <input checked="" type="radio"/> Metric <input type="radio"/> Imperial |                                  |
| Wheel Diameter   | 250mm                            |
| Wheel Width  | 62mm                             |
| Wheel Bearing  | Wheel With Taper Roller Bearings |
| Plate Size   | 175 x 140mm                      |
| Bolt Hole Spacing  | 140x105mm                        |
| Plate Hole   | 17mm                             |
| Overall Height   | 330mm                            |
| Hardness Of Tread  | 92±5° Shore A                    |
| Load Capacity (Dynamic)  | 1600kgs                          |
| Load Capacity (Static)   | 2400kgs                          |
| Temperature  | -20°C to +70°C                   |
| Fork Type  | Rigid Caster                     |
| Stainless  | N/A                              |
| Electrical Conductivity  | N/A                              |
| Anti-Static  | N/A                              |
| Weight   | 20.66kgs                         |
| Standard   | ISO22883                         |

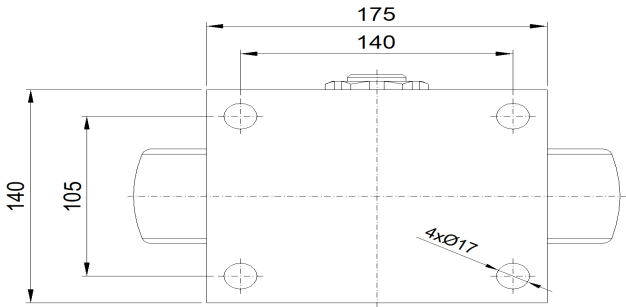
Advantages at a glance

|                            |           |
|----------------------------|-----------|
| Rolling Resistance         | ● ● ● ● ● |
| Operating Noise            | ● ● ● ● ● |
| Floor Surface Preservation | ● ● ● ● ● |

Dimensions



Mounting



\* For any deviation between metric and imperial spec, please refer to the metric spec.