

1162D Super Heavy Duty Casters Series (Double Wheel)



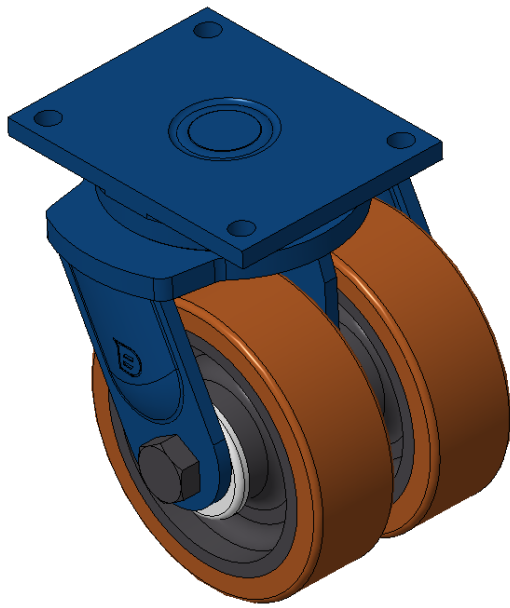
VQPU (brown flat) Wheel Diameter x Wheel Width 250 x 80mm

EAN  
KS-11621000542321

Portable Casters, Welded Caster Fork, blue painted finish.  
Base plate Mounting Type device, 210x160mm Bolt Hole Spacing.  
Cast Iron Wheel Center, High Quality Polyurethane Wheel Tread, Cast Iron brown.  
Bearings—skew ball bearings.

Wheel Tread: Hhigh-Quality Polyurethane  
Wheel Center: Iron core / Cast iron core

Drawings are for reference only and may differ from the product



Picture may differ from original product

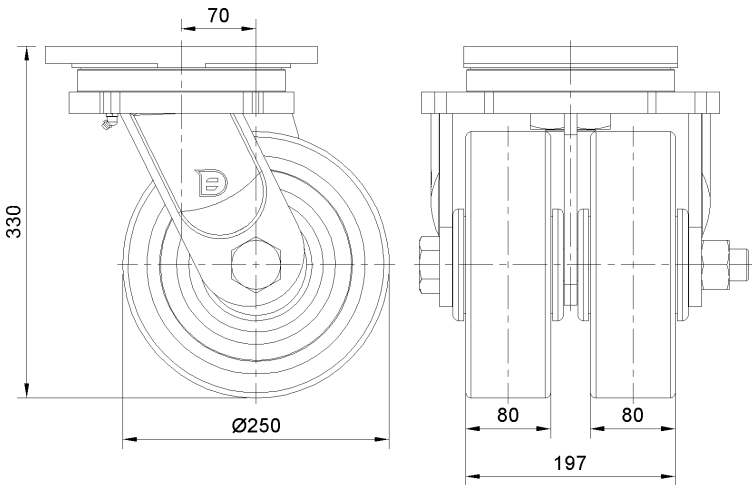
Technical Data

<input checked="" type="radio"/> Metric <input type="radio"/> Imperial	
Wheel Diameter	250mm
Wheel Width	197mm
Wheel Bearing	Wheel With Taper Roller Bearings
Plate Size	255 x 200mm
Bolt Hole Spacing	210 x 160mm
Plate Hole	21mm
Offset	70mm
Swivel Interference	436mm
Overall Height	330mm
Swivel Radius	218mm
Hardness Of Tread	92±5° Shore A
Load Capacity (Dynamic)	3600kgs
Load Capacity (Static)	5400kgs
Temperature	-20°C to +70°C
Fork Type	Swivel Caster
Stainless	N/A
Electrical Conductivity	N/A
Anti-Static	N/A
Weight	45.76kgs
Standard	ISO22883

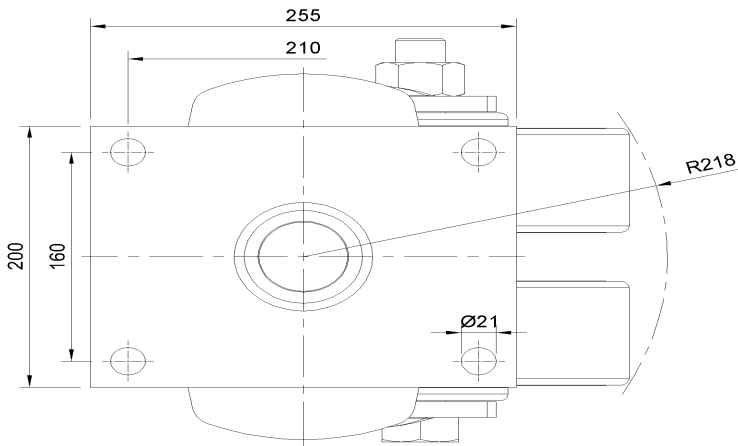
Advantages at a glance

Rolling Resistance	● ● ● ● ●
Operating Noise	● ● ● ● ●
Floor Surface Preservation	● ● ● ● ●

Dimensions



Mounting



\* For any deviation between metric and imperial spec, please refer to the metric spec.