

1162 Super Heavy Duty Casters Series (Single Wheel)



VQPU (brown flat) Wheel Diameter x Wheel Width 250 x 80mm

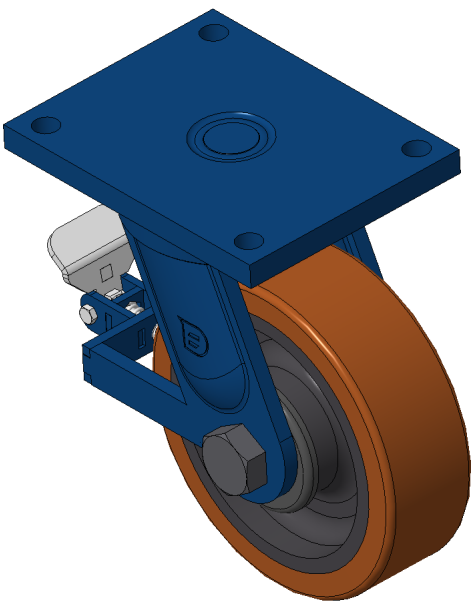
EAN

KS-11621000544111

Rear brake Caster, Welded Caster Fork Blue painted finish, Mounting Type - Top Plate, 140x105mm Bolt Hole Spacing Cast Iron Wheel Center, High Quality Polyurethane tread, Cast Iron brown Bearing—Ball Bearing

Wheel tread: Made of high-quality polyurethane
Wheel Center: iron core/cast iron core

Drawings are for reference only and may differ from the product



Picture may differ from original product

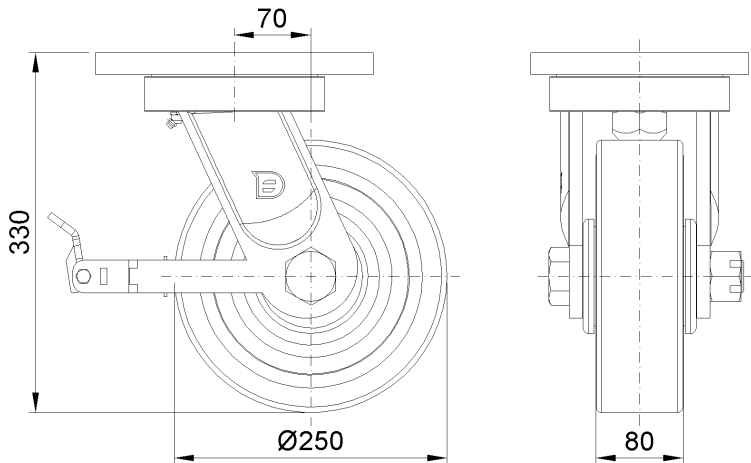
Technical Data

<input checked="" type="radio"/> Metric <input type="radio"/> Imperial	
Wheel Diameter	250mm
Wheel Width	80mm
Wheel Bearing	Wheels With Ball Bearings
Plate Size	255 x 200mm
Bolt Hole Spacing	210 x 160mm
Plate Hole	21mm
Offset	70mm
Swivel Interference	378mm
Overall Height	330mm
Swivel Radius	189mm
Hardness Of Tread	92±5° Shore A
Load Capacity (Dynamic)	1600kgs
Load Capacity (Static)	2400kgs
Temperature	-20°C to +70°C
Fork Type	Swivel Caster With Rear Brake
Stainless	N/A
Electrical Conductivity	N/A
Anti-Static	N/A
Weight	20.36kgs
Standard	ISO22883

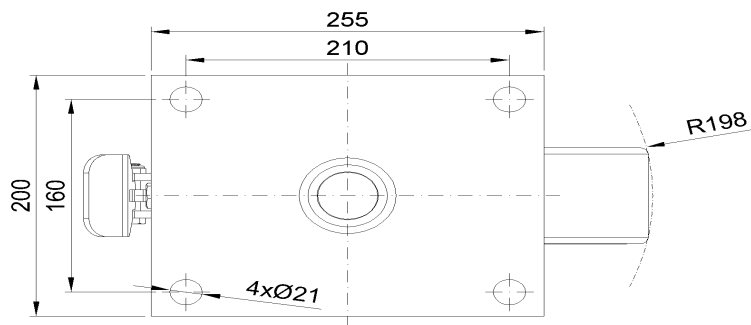
Advantages at a glance

Rolling Resistance	● ● ● ● ●
Operating Noise	● ● ● ● ●
Floor Surface Preservation	● ● ● ● ●

Dimensions



Mounting



* For any deviation between metric and imperial spec, please refer to the metric spec.